



# Div F & H Map

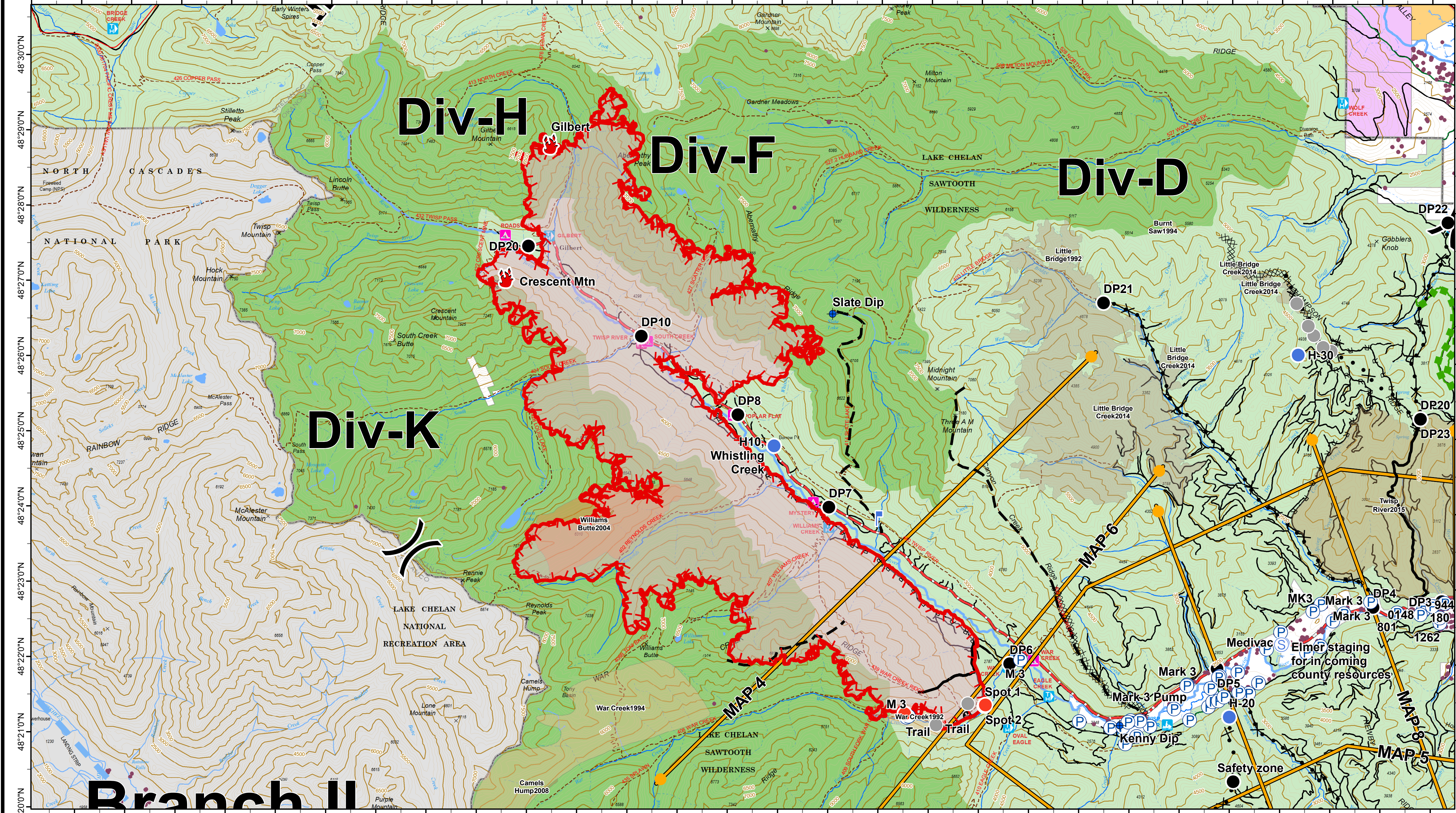
## Crescent Mountain Fire WA-OWF-000428

## McLeod Fire WA-OWF-000522

08/14/2018



120°44'0"W 120°43'0"W 120°42'0"W 120°41'0"W 120°40'0"W 120°39'0"W 120°38'0"W 120°37'0"W 120°36'0"W 120°35'0"W 120°34'0"W 120°33'0"W 120°32'0"W 120°31'0"W 120°30'0"W 120°29'0"W 120°28'0"W 120°27'0"W 120°26'0"W 120°25'0"W 120°24'0"W 120°23'0"W 120°22'0"W 120°21'0"W 120°20'0"W 120°19'0"W 120°18'0"W 120°17'0"W 120°16'0"W



# Branch II

					<b>FIRE_HISTORY</b>							

**Lighting 20180811**

Positive

Negative

Daily Map Products

08/13/2018 @ 2143  
NAD 83 USFS R6 Albers (Meters)  
SA Red Team GIS  
Latest Intel: 20180812 @ 2306

Contour Interval 100 Feet