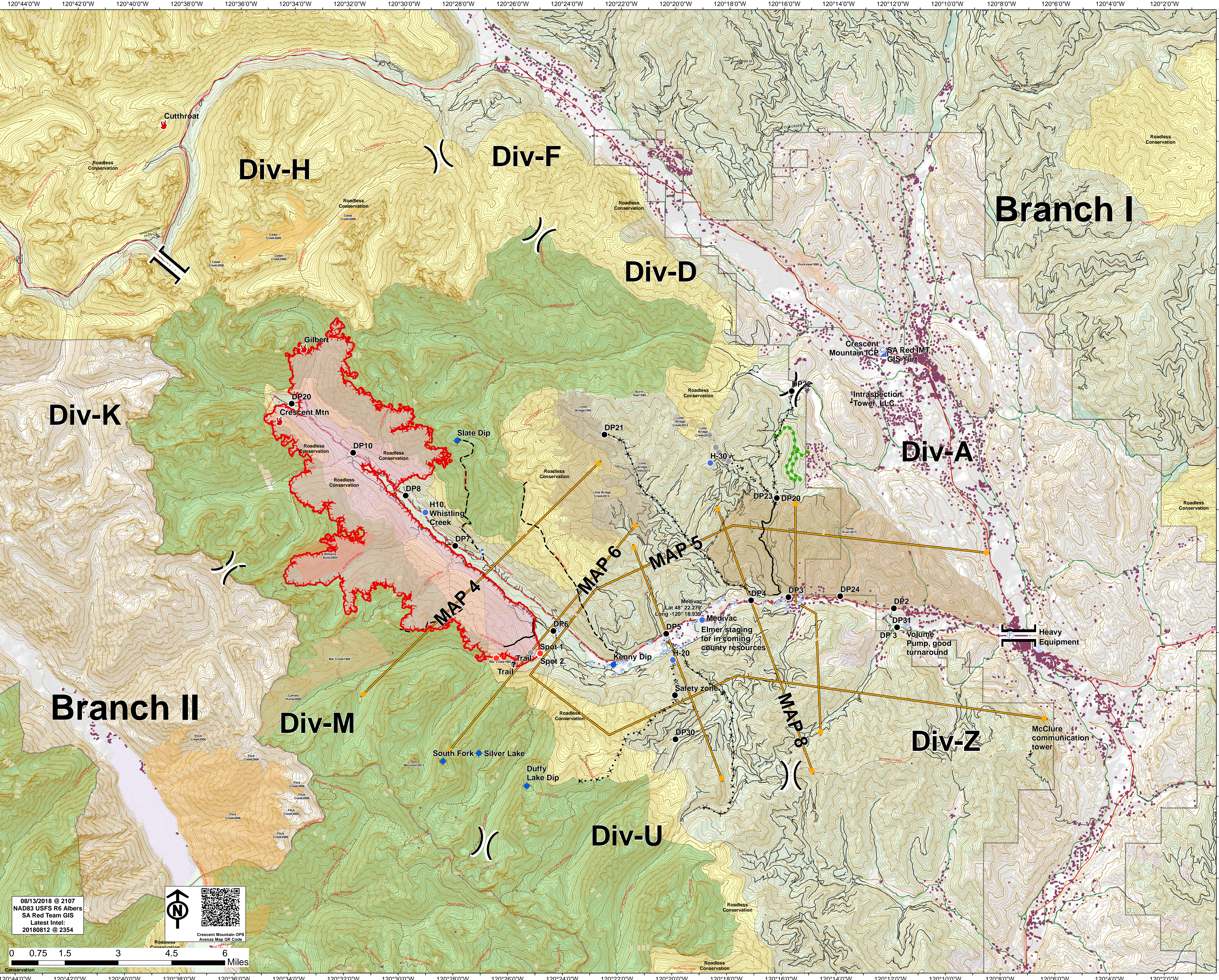




Safety
Operations
Map

- Camp
 - Dip Site
 - Drop Point
 - Fire Location
 - Fire Station
 - Gate
 - Habitat
 - Hot Spot
 - Incident Command Post
 - Internet Access
 - Lookout
 - Pump
 - Staging Area
 - Water Source
 - Value at Risk
 - Unknown
 - Other
-)) Division Break
-]] Branch Break
- Uncontrolled Fire Edge
 - Completed Line
 - Completed Doser Line
 - H - H Completed Hand Line
 - R - R Road as Completed Line
 - Proposed Doser Line
 - Proposed Fire Line
 - Escape Route
 - Management Action Point
 - Other
 - Temp River Road
 - Highway
 - County Road
 - City Road
 - OSD Road
 - Trail
 - Contour, 500
 - Contour, 100
 - Wildfire Daily Fire Perimeter
 - Structure
- Fire History
- | FIRE YEAR |
|-------------|
| 1990 - 1999 |
| 2000 |
| 2001 |
| 2002 |
| 2003 |
| 2004 |
| 2005 |
| 2006 |
| 2007 |
| 2008 |
| 2009 |
| 2010 |
| 2011 |
| 2012 |
| 2013 |
| 2014 |
| 2015 |
- Range/District
 - Wilderness
 - FS
 - BFS
 - PVT
 - STATE
 - USFWS



08/13/2018 @ 2107
NAD83 USFS R6 Albers
SA Red Team GIS
Latest Intel:
20180812 @ 2354

