



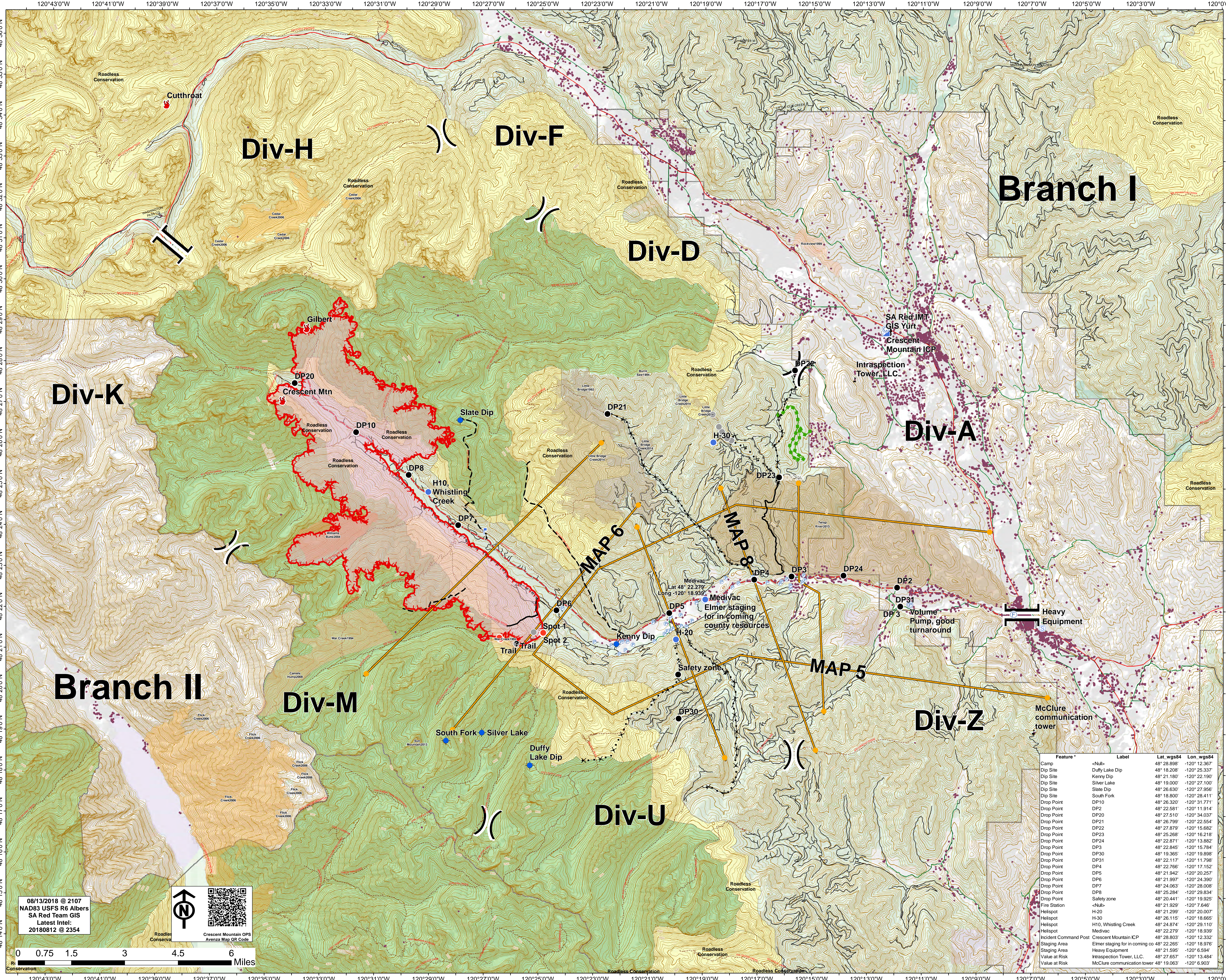
**Safety Operations Map**

- Camp
- Dip Site
- Drop Point
- Fire Location
- Fire Station
- Gate
- Helispot
- Hot Spot
- Incident Command Post
- Internet Access
- Lookout
- Staging Area
- Water Source
- Value at Risk
- Unknown
- Other
- Division Break
- Branch Break

- Uncompleted Fire Edge
- Completed Fire Edge
- Uncompleted Doser Line
- Completed Doser Line
- Uncompleted Hand Line
- Completed Hand Line
- Road as Completed Line
- Proposed Doser Line
- Planned Fire Line
- Escape Route
- Management Action Point
- Other

- Terry River Road
- Highway
- County Road
- City Road
- CRS Road
- Trail
- Contour, 500
- Contour, 100
- Wildfire Data File Pathname
- Structure

- FIRE HISTORY**
- 1999-1999
  - 2004
  - 2006
  - 2008
  - 2013
  - 2014
  - 2015



08/13/2018 @ 2107  
 NAD83 USFS R6 Albers  
 SA Red Team GIS  
 Latest Intel:  
 20180812 @ 2354

Crescent Mountain OPS  
 Avenza Map QR Code

Feature *	Label	Lat_wgs84	Lon_wgs84
Camp	<Null>	48° 28.898'	-120° 12.367'
Dip Site	Duffy Lake Dip	48° 18.208'	-120° 25.337'
Dip Site	Kenny Dip	48° 21.800'	-120° 22.197'
Dip Site	Silver Lake	48° 19.000'	-120° 27.100'
Dip Site	Slate Dip	48° 26.630'	-120° 27.956'
Dip Site	South Fork	48° 18.800'	-120° 28.411'
Drop Point	DP10	48° 26.320'	-120° 31.771'
Drop Point	DP2	48° 22.581'	-120° 11.914'
Drop Point	DP20	48° 27.517'	-120° 34.037'
Drop Point	DP21	48° 26.799'	-120° 22.554'
Drop Point	DP22	48° 27.879'	-120° 15.682'
Drop Point	DP23	48° 25.268'	-120° 16.218'
Drop Point	DP24	48° 22.871'	-120° 13.882'
Drop Point	DP3	48° 22.845'	-120° 15.784'
Drop Point	DP30	48° 19.365'	-120° 19.898'
Drop Point	DP31	48° 22.117'	-120° 11.798'
Drop Point	DP4	48° 22.766'	-120° 17.152'
Drop Point	DP5	48° 21.942'	-120° 20.257'
Drop Point	DP6	48° 21.997'	-120° 24.390'
Drop Point	DP7	48° 24.063'	-120° 28.008'
Drop Point	DP8	48° 25.284'	-120° 29.834'
Drop Point	DP9	48° 20.441'	-120° 19.925'
Fire Station	<Null>	48° 21.928'	-120° 11.846'
Helispot	H-20	48° 21.298'	-120° 20.007'
Helispot	H-30	48° 26.115'	-120° 18.665'
Helispot	H10, Whistling Creek	48° 24.874'	-120° 29.110'
Helispot	Medivac	48° 22.279'	-120° 18.939'
Incident Command Post	Crescent Mountain ICP	48° 28.803'	-120° 12.332'
Staging Area	Elmer staging for in coming co	48° 22.265'	-120° 18.976'
Heavy Equipment	Heavy Equipment	48° 21.928'	-120° 6.594'
Value at Risk	Intrasppection Tower, LLC.	48° 27.657'	-120° 13.484'
Value at Risk	McClure communication tower	48° 19.063'	-120° 6.903'