

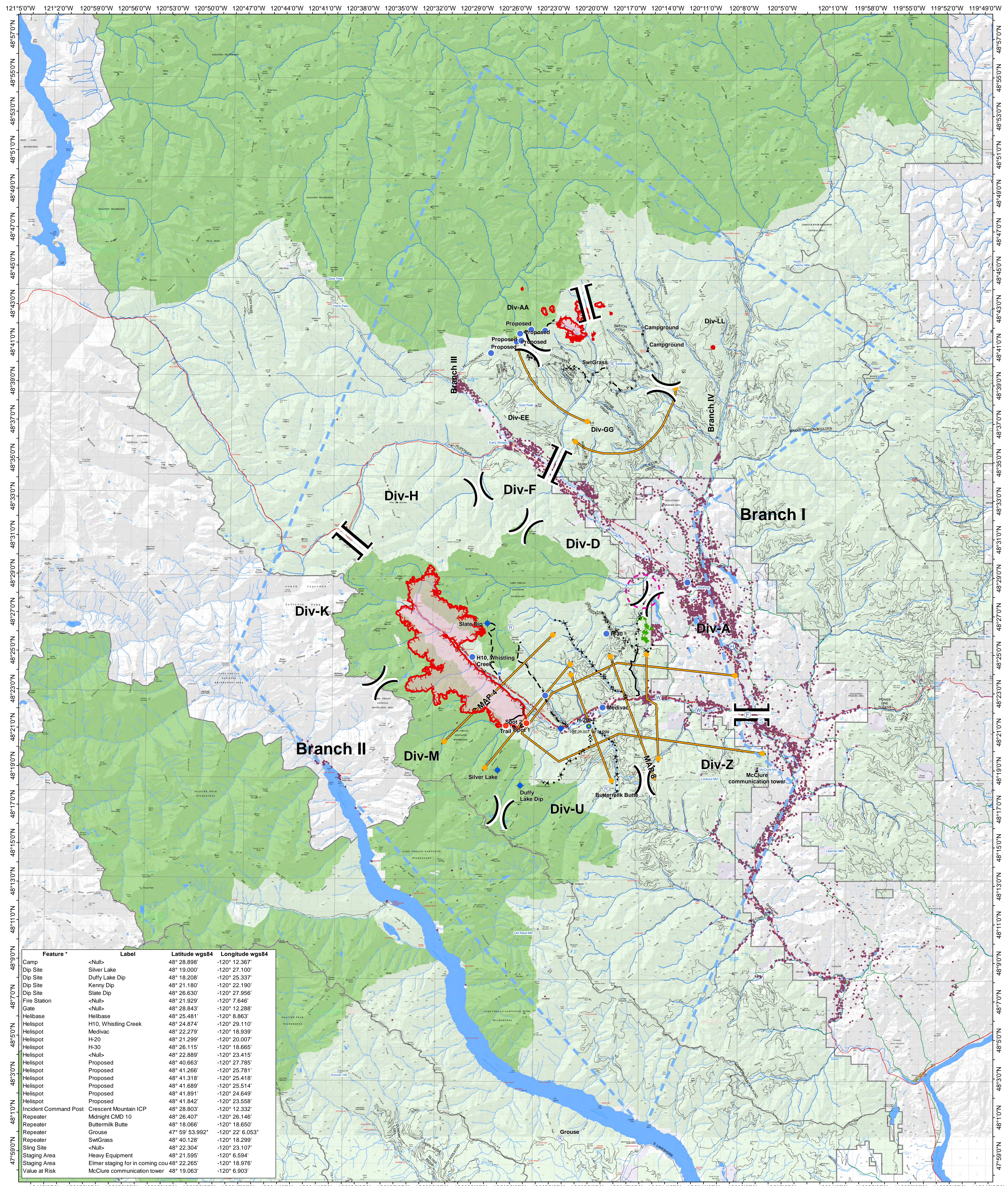
TFR- Air Operation Map

Crescent Mountain Fire

WA-OWF-000428

McLoed Fire

WA-OWF-000522



Feature	Label	Latitude wgs84	Longitude wgs84
Camp	<Null>	48° 28.898'	-120° 12.367'
Dip Site	Silver Lake	48° 19.000'	-120° 27.100'
Dip Site	Duffy Lake Dip	48° 18.208'	-120° 25.337'
Dip Site	Kenny Dip	48° 21.180'	-120° 22.190'
Dip Site	Slate Dip	48° 26.630'	-120° 27.956'
Fire Station	<Null>	48° 21.929'	-120° 7.646'
Gate	<Null>	48° 28.843'	-120° 12.288'
Helibase	Helibase	48° 25.481'	-120° 8.863'
Helispot	H10, Whistling Creek	48° 24.874'	-120° 29.110'
Helispot	Medivac	48° 22.279'	-120° 18.939'
Helispot	H-20	48° 21.299'	-120° 20.007'
Helispot	H-30	48° 26.115'	-120° 18.665'
Helispot	<Null>	48° 22.889'	-120° 23.415'
Helispot	Proposed	48° 40.663'	-120° 27.785'
Helispot	Proposed	48° 41.266'	-120° 25.781'
Helispot	Proposed	48° 41.318'	-120° 25.418'
Helispot	Proposed	48° 41.689'	-120° 25.514'
Helispot	Proposed	48° 41.891'	-120° 24.649'
Helispot	Proposed	48° 41.842'	-120° 23.558'
Incident Command Post	Crescent Mountain ICP	48° 28.803'	-120° 12.332'
Repeater	Midnight CMD 10	48° 26.407'	-120° 26.146'
Repeater	Buttermilk Butte	48° 18.066'	-120° 18.650'
Repeater	Grouse	47° 59' 53.992"	-120° 22' 6.053"
Repeater	SwtGrass	48° 40.128'	-120° 18.299'
Sling Site	<Null>	48° 22.304'	-120° 23.107'
Staging Area	Heavy Equipment	48° 21.595'	-120° 6.594'
Staging Area	Elmer staging for in coming cou	48° 22.265'	-120° 18.976'
Value at Risk	McClure communication tower	48° 19.063'	-120° 6.903'

- Camp
- Helibase
- Helispot
- Structures
- Repeater
- Incident Command Post

- Division Break
- Branch Break
- Uncontrolled Fire Edge
- Temporary Flight Restriction
- Planned Fire Line

Fire_History

- Planned Secondary Line
- Management Action Point
- Restricted Operational Zone
- Wildfire Daily Fire Perimeter
- RangerDistrict

OWNER

- FS
- NPS
- PVT
- STATE
- USFWS

- Twisp River Road
- Highway
- County Road
- City Road
- USFS road

OPS Avenza Maps QR Code

08/13/2018 @2246
 NAD 83 USFS R6 Albers (Meters)
 SA Red Team GIS
 Latest Intel: 20180812 @ 2306
08/14/2018