

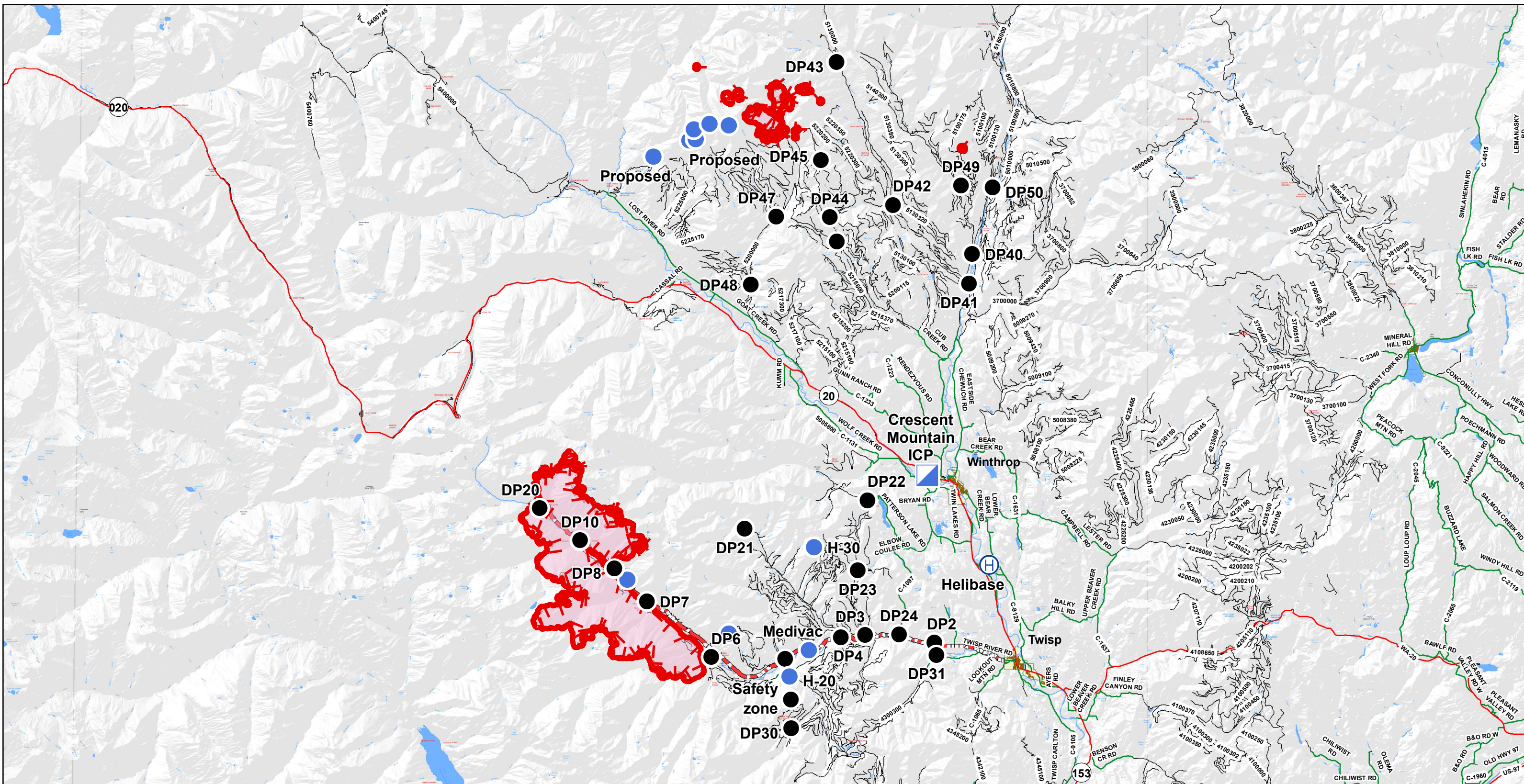


# Transportation Map

## Crescent Mountain Fire WA-OWF-000428

## McLeod Fire WA-OWF-000522

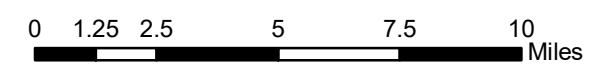
08/14/2018



- Drop Point
- Helispot
- Uncontrolled Fire Edge
- Wildfire Daily Fire Perimeter
- Twisp River Road
- Highway
- County Road
- City Road
- USFS road
- Helibase
- Incident Command Post
- Towns



Daily Map Products



08/13/2018 @ 2001  
 NAD 83 USFS R6 Albers (Meters)  
 SA Red Team GIS  
 Latest Intel: 20180812 @ 2306