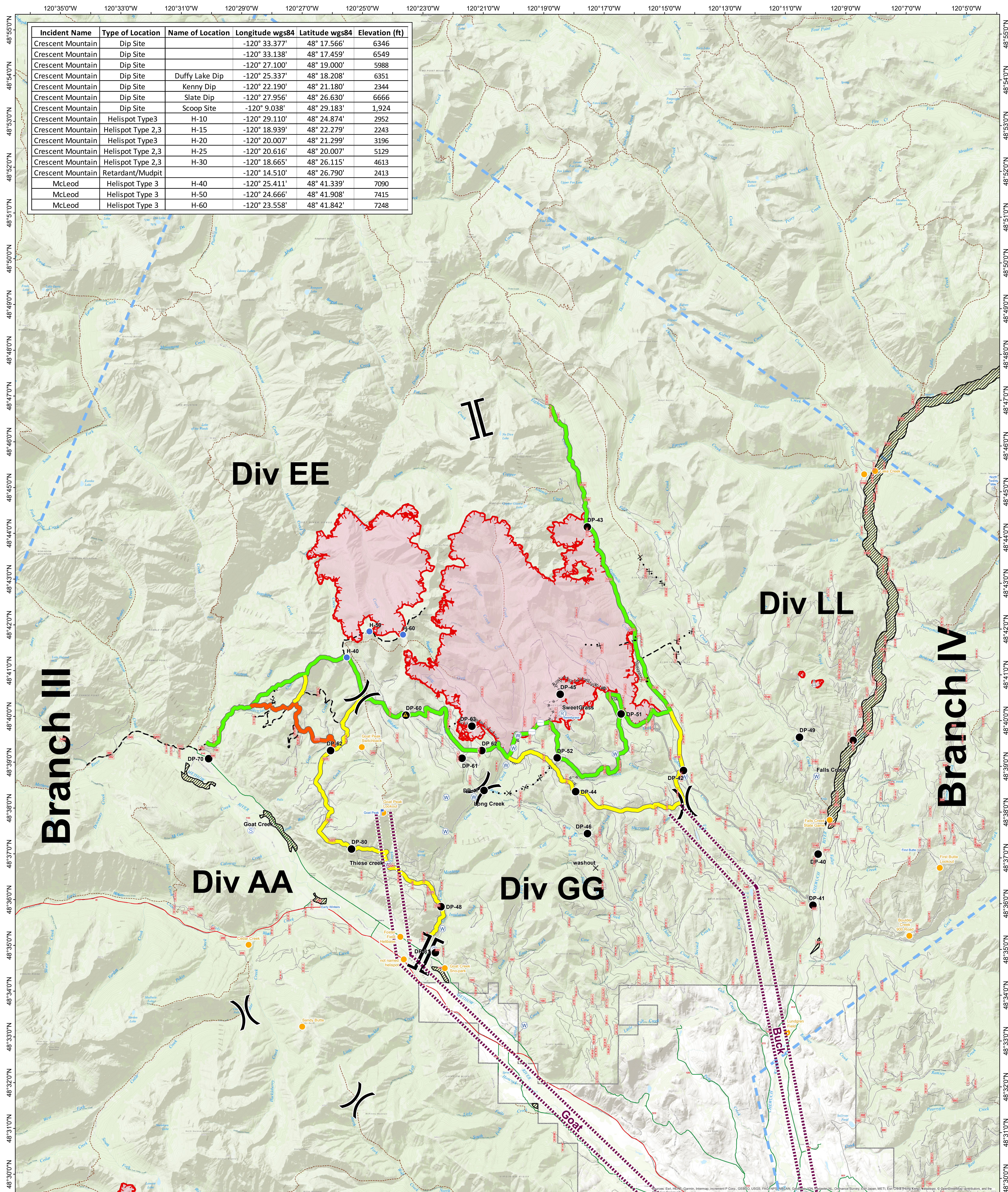


# Air Ops Helibase

McLeod Fire  
WA-OWF-000522  
Acreage: 17,586

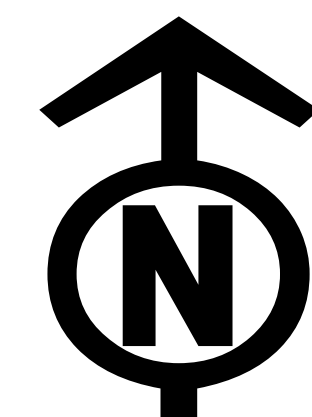


Incident Name	Type of Location	Name of Location	Longitude wgs84	Latitude wgs84	Elevation (ft)
Crescent Mountain	Dip Site		-120° 33.377'	48° 17.566'	6346
Crescent Mountain	Dip Site		-120° 33.138'	48° 17.459'	6549
Crescent Mountain	Dip Site		-120° 27.100'	48° 19.000'	5988
Crescent Mountain	Dip Site	Duffy Lake Dip	-120° 25.337'	48° 18.208'	6351
Crescent Mountain	Dip Site	Kenny Dip	-120° 22.190'	48° 21.180'	2344
Crescent Mountain	Dip Site	Slate Dip	-120° 27.956'	48° 26.630'	6666
Crescent Mountain	Dip Site	Scoop Site	-120° 9.038'	48° 29.183'	1,924
Crescent Mountain	Helispot Type3	H-10	-120° 29.110'	48° 24.874'	2952
Crescent Mountain	Helispot Type 2,3	H-15	-120° 18.939'	48° 22.279'	2243
Crescent Mountain	Helispot Type 3	H-20	-120° 20.007'	48° 21.299'	3196
Crescent Mountain	Helispot Type 2,3	H-25	-120° 20.616'	48° 20.007'	5129
Crescent Mountain	Helispot Type 2,3	H-30	-120° 18.665'	48° 26.115'	4613
Crescent Mountain	Retardant/Mudpit		-120° 14.510'	48° 26.790'	2413
McLeod	Helispot Type 3	H-40	-120° 25.411'	48° 41.339'	7090
McLeod	Helispot Type 3	H-50	-120° 24.666'	48° 41.908'	7415
McLeod	Helispot Type 3	H-60	-120° 23.558'	48° 41.842'	7248

120°35'0"W 120°33'0"W 120°31'0"W 120°29'0"W 120°27'0"W 120°25'0"W 120°23'0"W 120°21'0"W 120°19'0"W 120°17'0"W 120°15'0"W 120°13'0"W 120°11'0"W 120°9'0"W 120°7'0"W 120°5'0"W

48°30'0"N 48°31'0"N 48°32'0"N 48°33'0"N 48°34'0"N 48°35'0"N 48°36'0"N 48°37'0"N 48°38'0"N 48°39'0"N 48°40'0"N 48°41'0"N 48°42'0"N 48°43'0"N 48°44'0"N 48°45'0"N 48°46'0"N 48°47'0"N 48°48'0"N 48°49'0"N 48°50'0"N 48°51'0"N 48°52'0"N 48°53'0"N 48°54'0"N 48°55'0"N

- Flight Routes
- Radio Tower
- MVRD Helispot
- Closure
- Drop Point
- Helispot
- Lookout
- Repeater
- Safety Zone
- Sling Site
- Staging Area
- Water Source
- Water Tank
- Value at Risk
- Branch Break
- Division Break
- Uncontrolled Fire Edge
- Completed Line
- Completed Dozer Line
- Completed Hand Line
- Road as Completed Line
- Access or Improved Road
- Active Burnout
- Proposed Dozer Line
- Planned Fire Line
- Temporary Flight Restriction
- Contingency Lines
  - primary
  - alternate
  - contingency
- Wildfire Daily Fire Perimeter
- Retardant Avoidance Areas



0 0.5 1 2 3 4 Miles

8/22/2018 @ 2242  
NAD 83 USFS R6 Albers (Meters)  
SA Blue Team GIS  
Latest Intel: 20180822@1700

**08/23/2018**