

Air Ops Briefing Map

Crescent Mountain Fire

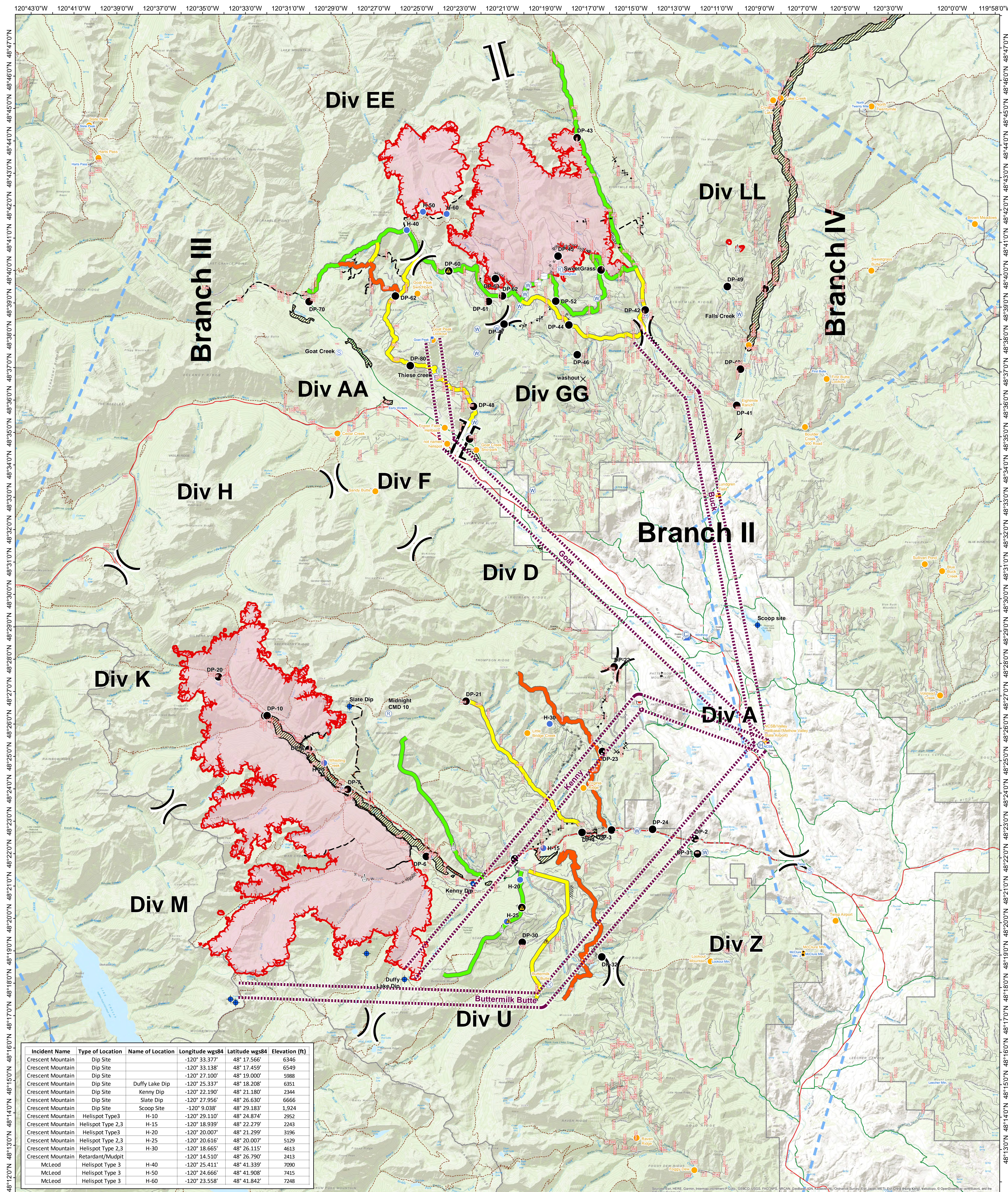
WA-OWF-000428

Acreage: 32, 907

McLeod Fire

WA-OWF-000522

Acreage: 17,586



Incident Name	Type of Location	Name of Location	Longitude wgs84	Latitude wgs84	Elevation (ft)
Crescent Mountain	Dip Site		-120° 33.377'	48° 17.566'	6346
Crescent Mountain	Dip Site		-120° 33.138'	48° 17.459'	6549
Crescent Mountain	Dip Site		-120° 27.100'	48° 19.000'	5988
Crescent Mountain	Dip Site	Duffy Lake Dip	-120° 25.337'	48° 18.208'	6351
Crescent Mountain	Dip Site	Kenny Dip	-120° 22.190'	48° 21.180'	2344
Crescent Mountain	Dip Site	Slate Dip	-120° 27.956'	48° 26.630'	6666
Crescent Mountain	Dip Site	Scoop Site	-120° 9.038'	48° 29.183'	1,924
Crescent Mountain	Helispot Type 3	H-10	-120° 29.110'	48° 24.874'	2952
Crescent Mountain	Helispot Type 2,3	H-15	-120° 18.939'	48° 22.279'	2243
Crescent Mountain	Helispot Type 3	H-20	-120° 20.007'	48° 21.299'	3196
Crescent Mountain	Helispot Type 2,3	H-25	-120° 20.616'	48° 20.007'	5129
Crescent Mountain	Helispot Type 2,3	H-30	-120° 18.665'	48° 26.115'	4613
Crescent Mountain	Retardant/Mudpit		-120° 14.510'	48° 26.790'	2413
McLeod	Helispot Type 3	H-40	-120° 25.411'	48° 41.339'	7090
McLeod	Helispot Type 3	H-50	-120° 24.666'	48° 41.908'	7415
McLeod	Helispot Type 3	H-60	-120° 23.558'	48° 41.842'	7248

● Radio Tower Ⓜ Helibase ⚠ Safety Zone
Ⓧ MVRD Helispot Ⓜ Helispot ⚠ Sling Site
Ⓧ Camp Ⓜ Incident Command Post Ⓧ Staging Area
Ⓧ Closure Ⓜ Lookout Ⓧ Water Source
Ⓧ Dip Site Ⓜ Repeater Ⓧ Water Tank
Ⓧ Drop Point Ⓜ Retardant/Mud Pit Ⓧ Value at Risk

Contingency Lines
 primary
 alternate
 contingency
 Retardant Avoidance Areas
 Wildfire Daily Fire Perimeter

Uncontrolled Fire Edge
 Completed Line
 Completed Dozer Line
 Completed Hand Line
 Retardant Avoidance Areas
 Road as Completed Line
 Access or Improved Road

● Active Burnout
Ⓧ Proposed Dozer Line
Ⓧ Planned Fire Line
Ⓧ Temporary Flight Restriction
Ⓧ Other
Ⓧ Flight Routes

8/22/2018 @ 2219
 NAD 83 USFS R6 Albers (Meters)
 SA Blue Team GIS
 Latest Intel: 08222018@1700
08/23/2018