

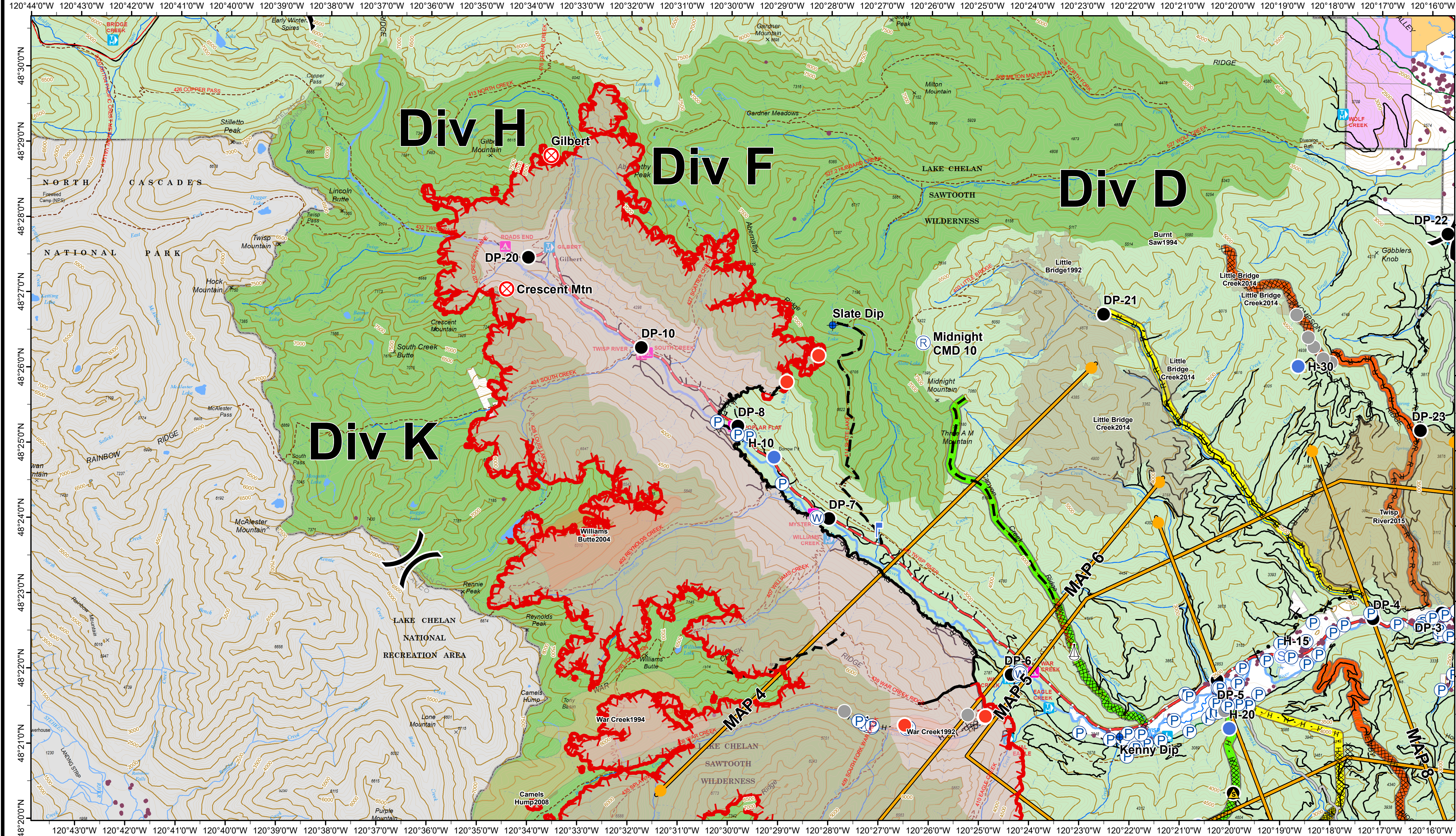


Div F & H Map

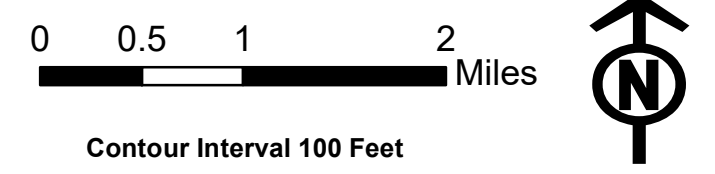
Crescent Mountain Fire WA-OWF-000428 Approx Acreage: 32,907

McLeod Fire WA-OWF-000522 Approx Acreage: 17,586

08/23/2018



<ul style="list-style-type: none"> Wildfire Daily Fire Perimeter Residence Ranger District Wilderness 	<ul style="list-style-type: none"> Dip Site Drop Point Fire Origin Fire Station Helibase Helispot 	<ul style="list-style-type: none"> Incident Command Post Lookout Pump Repeater Retardant/Mud Pit 	<ul style="list-style-type: none"> Safety Zone Sling Site Staging Area Water Source 	<ul style="list-style-type: none"> Value at Risk Division Break Branch Break 	<ul style="list-style-type: none"> Uncontrolled Fire Edge Completed Line Completed Dozer Line H - H Completed Hand Line R - R Road as Completed Line 	<ul style="list-style-type: none"> Access or Improved Road Planned Fire Line Proposed Dozer Line Management Action Point 	<ul style="list-style-type: none"> Contingency Line primary alternate contingency 	<ul style="list-style-type: none"> Twisp River Road Highway County Road City Road USFS road Trail 	<ul style="list-style-type: none"> OWNER BLM FS MSF NPS 	<ul style="list-style-type: none"> PUD PVT W City or Municipality WA Dept of F&W WA State Parks Washington DNR
---	---	---	---	---	---	--	---	---	--	---



8/22/2018 @ 23:14
NAD 83 USFS R6 Albers (Meters)
SA Blue Team GIS
Latest Intel: 20180822 @ 1700