



Div LL Map

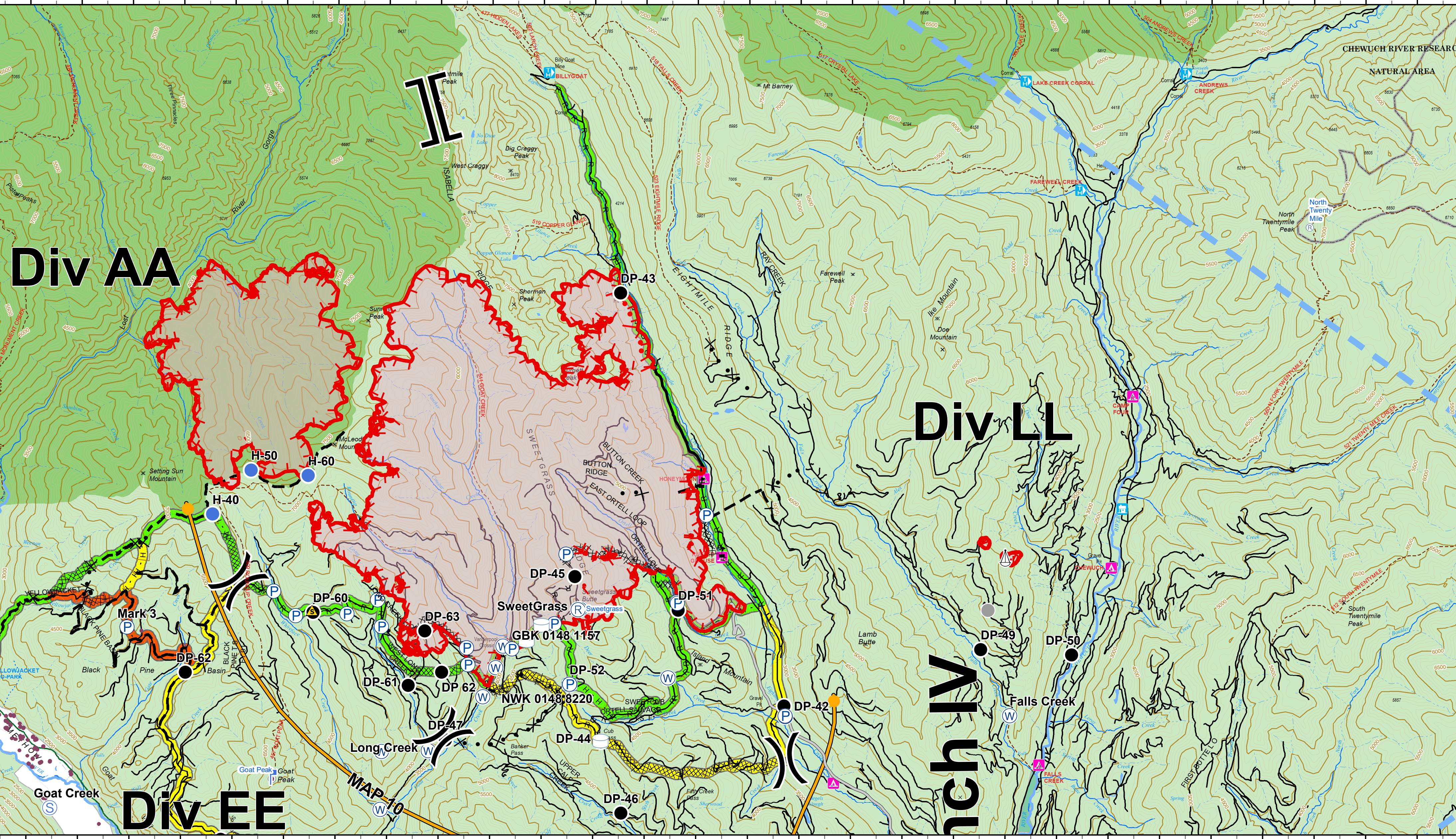
Crescent Mountain Fire WA-OWF-000428 Approx Acreage: 32,907

McLeod Fire WA-OWF-000522 Approx Acreage: 17,586

08/23/2018



120°29'0"W 120°28'0"W 120°27'0"W 120°26'0"W 120°25'0"W 120°24'0"W 120°23'0"W 120°22'0"W 120°21'0"W 120°20'0"W 120°19'0"W 120°18'0"W 120°17'0"W 120°16'0"W 120°15'0"W 120°14'0"W 120°13'0"W 120°12'0"W 120°11'0"W 120°10'0"W 120°9'0"W 120°8'0"W 120°7'0"W 120°6'0"W 120°5'0"W 120°4'0"W 120°3'0"W 120°2'0"W



120°29'0"W 120°28'0"W 120°27'0"W 120°26'0"W 120°25'0"W 120°24'0"W 120°23'0"W 120°22'0"W 120°21'0"W 120°20'0"W 120°19'0"W 120°18'0"W 120°17'0"W 120°16'0"W 120°15'0"W 120°14'0"W 120°13'0"W 120°12'0"W 120°11'0"W 120°10'0"W 120°9'0"W 120°8'0"W 120°7'0"W 120°6'0"W 120°5'0"W 120°4'0"W 120°3'0"W 120°2'0"W

- Wildfire Daily Fire Perimeter
- Residence
- Ranger District
- Wilderness
- Dip Site
- Incident Command Post
- Lookout
- Pump
- Fire Station
- Helibase
- Helispot
- Safety Zone
- Sling Site
- Staging Area
- Water Source
- Value at Risk
- Division Break
- Branch Break
- Uncontrolled Fire Edge
- Completed Line
- Completed Dozer Line
- H - H Completed Hand Line
- R - R Road as Completed Line
- Access or Improved Road
- Planned Fire Line
- Proposed Dozer Line
- Management Action Point
- Contingency Line
 - primary
 - alternate
 - contingency
- Twisp River Road
- Highway
- County Road
- City Road
- USFS road
- Trail
- OWNER
 - BLM
 - FS
 - MSF
 - NPS
 - PUD
 - PVT
 - City or Municipality
 - WA Dept of F&W
 - WA State Parks
 - Washington DNR



8/22/2018 @ 23:23
NAD 83 USFS R6 Albers (Meters)
SA Blue Team GIS
Latest Intel: 20180822 @ 1700

0 0.5 1 2 Miles

Contour Interval 100 Feet

Daily Map Products