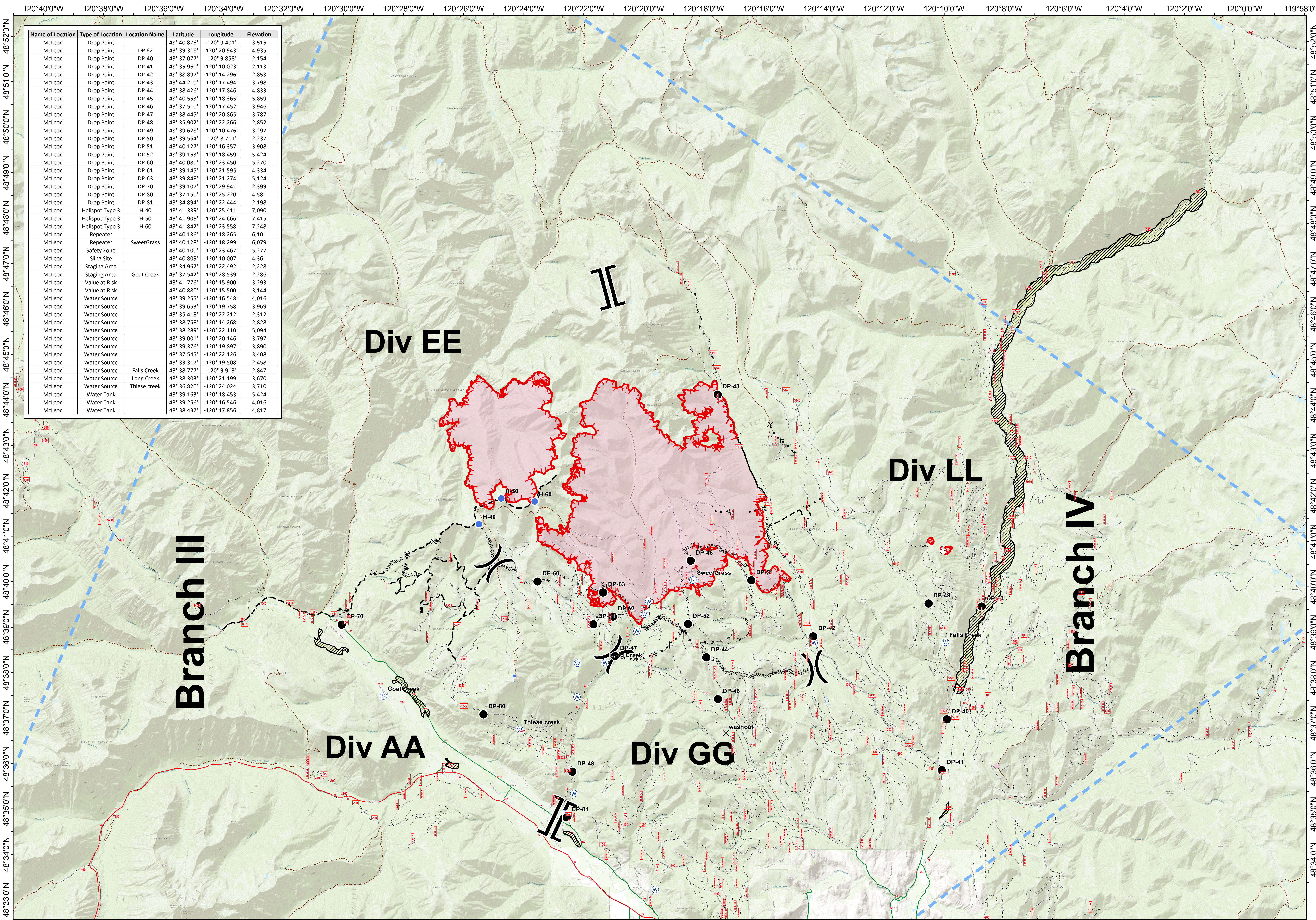


Medical and Air Ops Map

McLeod Fire
WA-OWF-000522

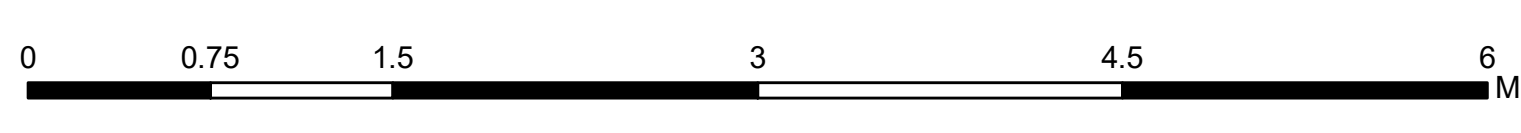
Approximate Acreage: 17,586



Name of Location	Type of Location	Location Name	Latitude	Longitude	Elevation
McLeod	Drop Point		48° 40.876'	-120° 9.401'	3,515
McLeod	Drop Point	DP-62	48° 39.316'	-120° 20.943'	4,935
McLeod	Drop Point	DP-40	48° 37.077'	-120° 9.858'	2,154
McLeod	Drop Point	DP-41	48° 35.960'	-120° 10.023'	2,113
McLeod	Drop Point	DP-42	48° 38.897'	-120° 14.296'	2,853
McLeod	Drop Point	DP-43	48° 44.210'	-120° 17.494'	3,798
McLeod	Drop Point	DP-44	48° 38.426'	-120° 17.846'	4,833
McLeod	Drop Point	DP-45	48° 40.553'	-120° 18.365'	5,859
McLeod	Drop Point	DP-46	48° 37.510'	-120° 17.452'	3,946
McLeod	Drop Point	DP-47	48° 38.445'	-120° 20.865'	3,787
McLeod	Drop Point	DP-48	48° 35.902'	-120° 22.266'	2,852
McLeod	Drop Point	DP-49	48° 39.628'	-120° 10.476'	3,297
McLeod	Drop Point	DP-50	48° 39.564'	-120° 8.711'	2,237
McLeod	Drop Point	DP-51	48° 40.127'	-120° 16.357'	3,908
McLeod	Drop Point	DP-52	48° 39.163'	-120° 18.459'	5,424
McLeod	Drop Point	DP-60	48° 40.080'	-120° 23.450'	5,270
McLeod	Drop Point	DP-61	48° 39.145'	-120° 21.595'	4,334
McLeod	Drop Point	DP-63	48° 39.848'	-120° 21.274'	5,124
McLeod	Drop Point	DP-70	48° 39.107'	-120° 29.941'	2,399
McLeod	Drop Point	DP-80	48° 37.150'	-120° 25.220'	4,581
McLeod	Drop Point	DP-81	48° 34.894'	-120° 22.444'	2,198
McLeod	Helispot Type 3	H-40	48° 41.339'	-120° 25.411'	7,090
McLeod	Helispot Type 3	H-50	48° 41.908'	-120° 24.666'	7,415
McLeod	Helispot Type 3	H-60	48° 41.842'	-120° 23.558'	7,248
McLeod	Repeater		48° 40.136'	-120° 18.265'	6,101
McLeod	Repeater	SweetGrass	48° 40.128'	-120° 18.299'	6,079
McLeod	Safety Zone		48° 40.100'	-120° 23.467'	5,277
McLeod	Sling Site		48° 40.809'	-120° 10.007'	4,361
McLeod	Staging Area		48° 34.967'	-120° 22.492'	2,228
McLeod	Staging Area	Goat Creek	48° 37.542'	-120° 28.539'	2,286
McLeod	Value at Risk		48° 41.776'	-120° 15.900'	3,293
McLeod	Value at Risk		48° 40.880'	-120° 15.500'	3,144
McLeod	Water Source		48° 39.255'	-120° 16.548'	4,016
McLeod	Water Source		48° 39.653'	-120° 19.758'	3,969
McLeod	Water Source		48° 35.418'	-120° 22.212'	2,312
McLeod	Water Source		48° 38.758'	-120° 14.268'	2,828
McLeod	Water Source		48° 38.289'	-120° 22.110'	5,094
McLeod	Water Source		48° 39.001'	-120° 20.146'	3,797
McLeod	Water Source		48° 39.376'	-120° 19.897'	3,890
McLeod	Water Source		48° 37.545'	-120° 22.126'	3,408
McLeod	Water Source		48° 33.317'	-120° 19.508'	2,458
McLeod	Water Source	Falls Creek	48° 38.777'	-120° 9.913'	2,847
McLeod	Water Source	Long Creek	48° 38.303'	-120° 21.199'	3,670
McLeod	Water Source	Thiese creek	48° 36.820'	-120° 24.024'	3,710
McLeod	Water Tank		48° 39.163'	-120° 18.453'	5,424
McLeod	Water Tank		48° 39.256'	-120° 16.546'	4,016
McLeod	Water Tank		48° 38.437'	-120° 17.856'	4,817

- Retardant Avoidance Areas
- Wildfire Daily Fire Perimeter
- Closure
- Repeater
- Water Source
- Drop Point
- Safety Zone
- Value at Risk
- Helispot
- Sling Site
- Staging Area
- Lookout
- Division Break
- Uncontrolled Fire Edge
- Completed Line
- Active Burnout
- Proposed Dotted Line
- Planned Fire Line
- Temporary Flight Restriction
- Access or Improved Road
- County Road
- USFS Road, Clip
- Trail, Clip
- Highway
- Washout

08/23/2018



All Products QR Code



8/22/2018 @ 21:37
NAD 83 USFS R6 Albers (Meters)
SA Blue Team GIS
Latest Intel: 20180822@1700