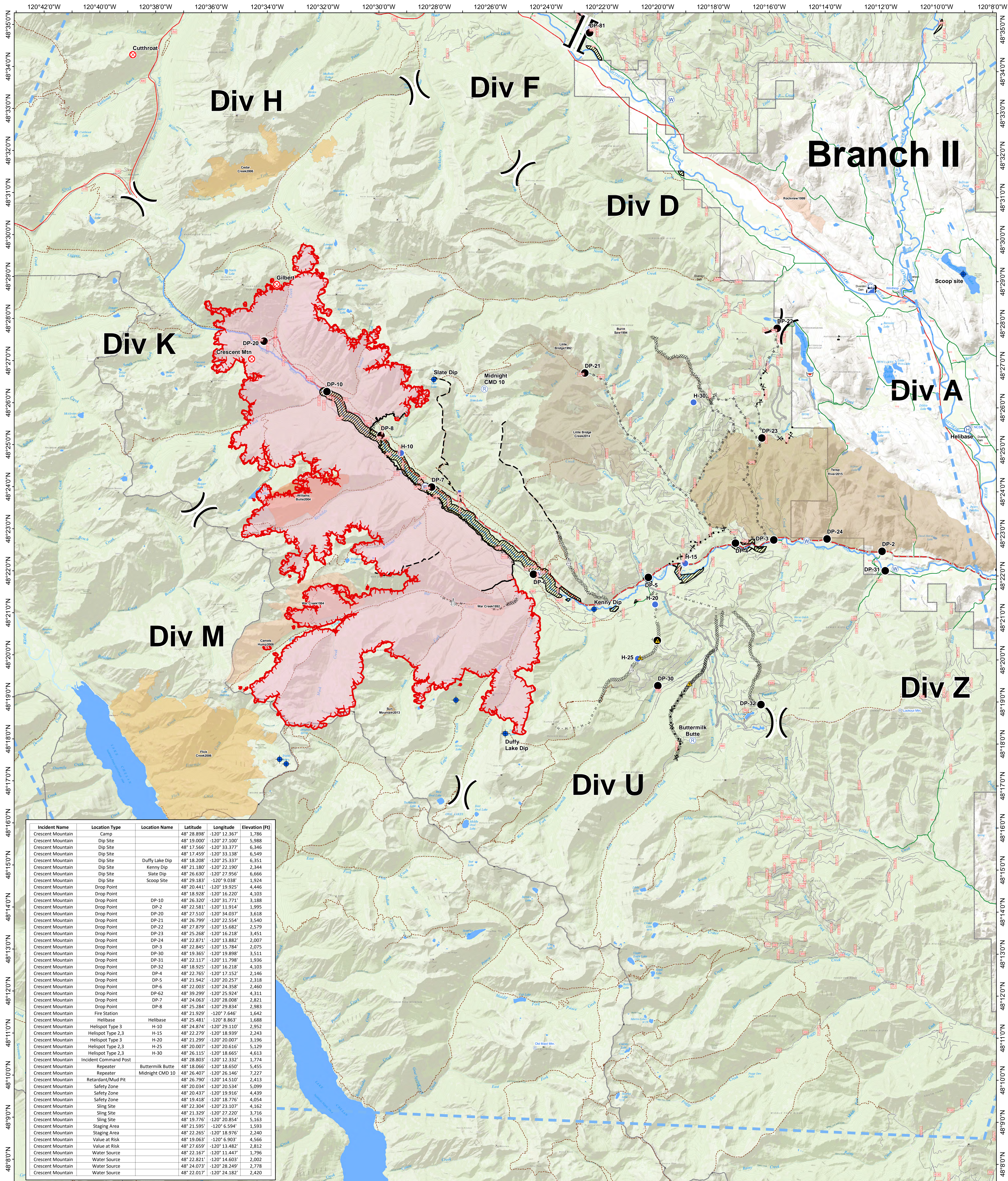


Medical and Air Ops Map

Crescent Mountain Fire

WA-OWF-000428

Approximate Acreage: 32,907



Incident Name	Location Type	Location Name	Latitude	Longitude	Elevation (ft)
Crescent Mountain	Camp		48° 28.898'	-120° 12.367'	1,786
Crescent Mountain	Dip Site		48° 19.000'	-120° 27.100'	5,988
Crescent Mountain	Dip Site		48° 17.566'	-120° 33.377'	6,346
Crescent Mountain	Dip Site		48° 17.459'	-120° 33.338'	6,549
Crescent Mountain	Dip Site	Duffy Lake Dip	48° 18.208'	-120° 25.337'	6,351
Crescent Mountain	Dip Site	Kenny Dip	48° 21.180'	-120° 22.190'	2,344
Crescent Mountain	Dip Site	Slate Dip	48° 26.630'	-120° 27.956'	6,666
Crescent Mountain	Dip Site	Scoop Site	48° 29.183'	-120° 9.038'	1,924
Crescent Mountain	Drop Point		48° 20.441'	-120° 19.925'	4,446
Crescent Mountain	Drop Point		48° 18.928'	-120° 16.220'	4,103
Crescent Mountain	Drop Point	DP-10	48° 20.300'	-120° 11.771'	3,388
Crescent Mountain	Drop Point	DP-2	48° 22.581'	-120° 11.914'	1,995
Crescent Mountain	Drop Point	DP-20	48° 27.510'	-120° 34.037'	3,618
Crescent Mountain	Drop Point	DP-21	48° 26.799'	-120° 22.554'	3,540
Crescent Mountain	Drop Point	DP-22	48° 27.879'	-120° 15.682'	2,579
Crescent Mountain	Drop Point	DP-23	48° 25.268'	-120° 16.218'	3,451
Crescent Mountain	Drop Point	DP-24	48° 22.871'	-120° 13.882'	2,007
Crescent Mountain	Drop Point	DP-30	48° 22.845'	-120° 15.784'	2,075
Crescent Mountain	Drop Point	DP-31	48° 19.365'	-120° 19.808'	3,521
Crescent Mountain	Drop Point	DP-32	48° 22.117'	-120° 11.798'	1,936
Crescent Mountain	Drop Point	DP-4	48° 18.925'	-120° 16.218'	4,103
Crescent Mountain	Drop Point	DP-5	48° 22.765'	-120° 17.152'	2,146
Crescent Mountain	Drop Point	DP-6	48° 21.942'	-120° 20.257'	2,318
Crescent Mountain	Drop Point	DP-6	48° 22.003'	-120° 24.358'	2,460
Crescent Mountain	Drop Point	DP-62	48° 39.299'	-120° 25.924'	4,311
Crescent Mountain	Drop Point	DP-7	48° 20.603'	-120° 18.022'	3,821
Crescent Mountain	Drop Point	DP-8	48° 25.284'	-120° 29.834'	2,983
Crescent Mountain	Fire Station		48° 21.929'	-120° 7.646'	1,642
Crescent Mountain	Helibase	Helibase	48° 25.481'	-120° 8.863'	1,688
Crescent Mountain	Helispot Type 3	H-10	48° 24.874'	-120° 29.110'	2,952
Crescent Mountain	Helispot Type 2,3	H-15	48° 22.279'	-120° 18.939'	2,243
Crescent Mountain	Helispot Type 3	H-20	48° 21.299'	-120° 20.007'	3,196
Crescent Mountain	Helispot Type 2,3	H-25	48° 20.007'	-120° 20.616'	5,129
Crescent Mountain	Helispot Type 2,3	H-30	48° 26.115'	-120° 18.665'	4,613
Crescent Mountain	Incident Command Post		48° 28.803'	-120° 12.332'	1,774
Crescent Mountain	Repeater	Buttermilk Butte	48° 18.066'	-120° 18.650'	5,455
Crescent Mountain	Repeater	Midnight CMD 10	48° 26.407'	-120° 26.146'	7,227
Crescent Mountain	Retardant/Mud Pit		48° 26.790'	-120° 14.510'	2,413
Crescent Mountain	Safety Zone		48° 20.034'	-120° 20.534'	5,099
Crescent Mountain	Safety Zone		48° 20.437'	-120° 19.916'	4,439
Crescent Mountain	Safety Zone		48° 19.418'	-120° 18.022'	4,824
Crescent Mountain	Sling Site		48° 22.304'	-120° 23.107'	4,162
Crescent Mountain	Sling Site		48° 21.329'	-120° 27.220'	3,716
Crescent Mountain	Sling Site		48° 19.776'	-120° 20.854'	5,163
Crescent Mountain	Staging Area		48° 21.595'	-120° 6.594'	1,593
Crescent Mountain	Staging Area		48° 22.265'	-120° 18.976'	2,240
Crescent Mountain	Value at Risk		48° 19.063'	-120° 6.903'	4,566
Crescent Mountain	Value at Risk		48° 21.653'	-120° 13.022'	3,821
Crescent Mountain	Water Source		48° 22.167'	-120° 11.447'	1,796
Crescent Mountain	Water Source		48° 22.821'	-120° 14.603'	2,002
Crescent Mountain	Water Source		48° 24.073'	-120° 28.249'	2,778
Crescent Mountain	Water Source		48° 22.017'	-120° 24.182'	2,420

Fire History

- 2008
- 1992 - 1999
- 2004
- 2013
- 2014
- 2015
- Wildfire Daily Fire Perimeter

Retardant Avoidance Areas

- Ranger District Clip
- Camp
- Dip Site
- Drop Point
- Fire Origin
- Gate
- Helibase
- Helispot
- Incident Command Post
- Lookout
- Repeater
- Retardant/Mud Pit
- Safety Zone
- Sling Site
- Staging Area
- Water Source
- Value at Risk

Division Break

Branch Break

Completed Dozer Line

Completed Hand Line

Road as Completed Line

Access or Improved Road

Proposed Dozer Line

Planned Fire Line

Temporary Flight Restriction

Other

Twisp River Road

Highway

County Road

USFS_Road_Clip

8/22/2018 @ 2230
 NAD 83 USFS R6 Albers (Meters)
 SA Blue Team GIS
 Latest Intel: 20180822 @ 1700PDT
08/23/2018

0 0.5 1 2 3 4 Miles