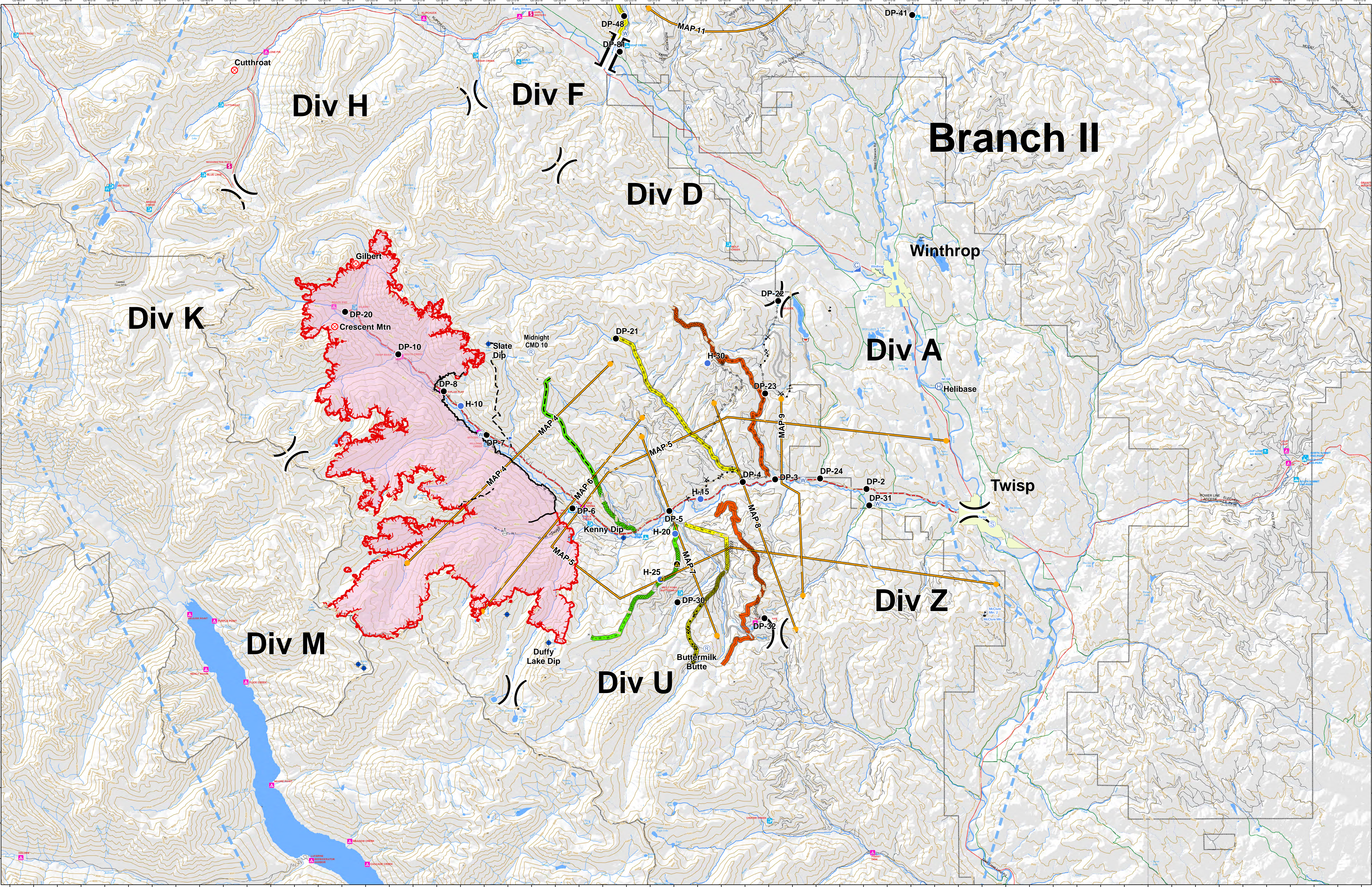




Briefing Map

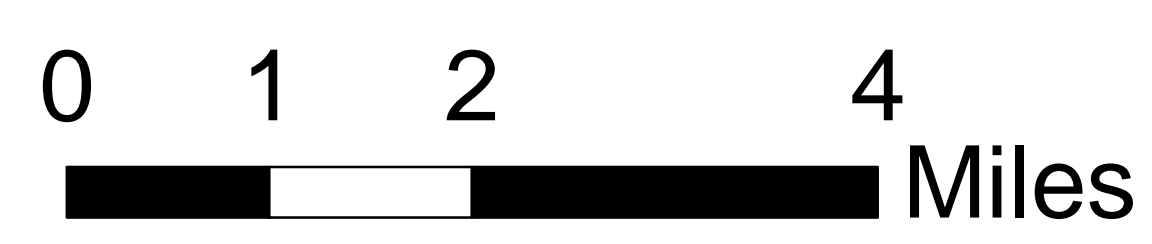
Crescent Mountain Fire WA-OWF-000428

08/23/2018

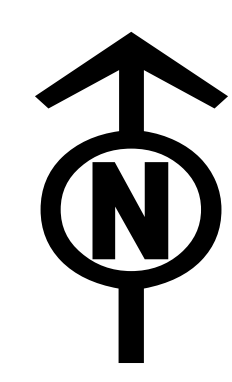


- Wildfire Daily Fire Perimeter
- Towns
- Ranger District
- Safety Zone
- Camp
- Dip Site
- Drop Point
- Fire Origin
- Helibase
- Helispot
- Incident Command Post
- Lookout
- Repeater
- Retardant/Mud Pit
- Sling Site
- Staging Area
- Water Source
- Value at Risk
- Division Break

- Uncontrolled Fire Edge
- Completed Line
- Completed Dozer Line
- Completed Hand Line
- Road as Completed Line
- Access or Improved Road
- Proposed Dozer Line
- Planned Fire Line
- Temporary Flight Restriction
- Management Action Point
- Contingency Lines
- primary
- alternate
- contingency
- Twisp River Road
- Highway
- County Road
- City Road
- USFS road



Approx Acreage: 32,855



8/22/2018 @ 21:59
 NAD 83 USFS R6 Albers (Meters)
 SA Blue Team GIS
 Latest Intel: 20180822 @ 1700