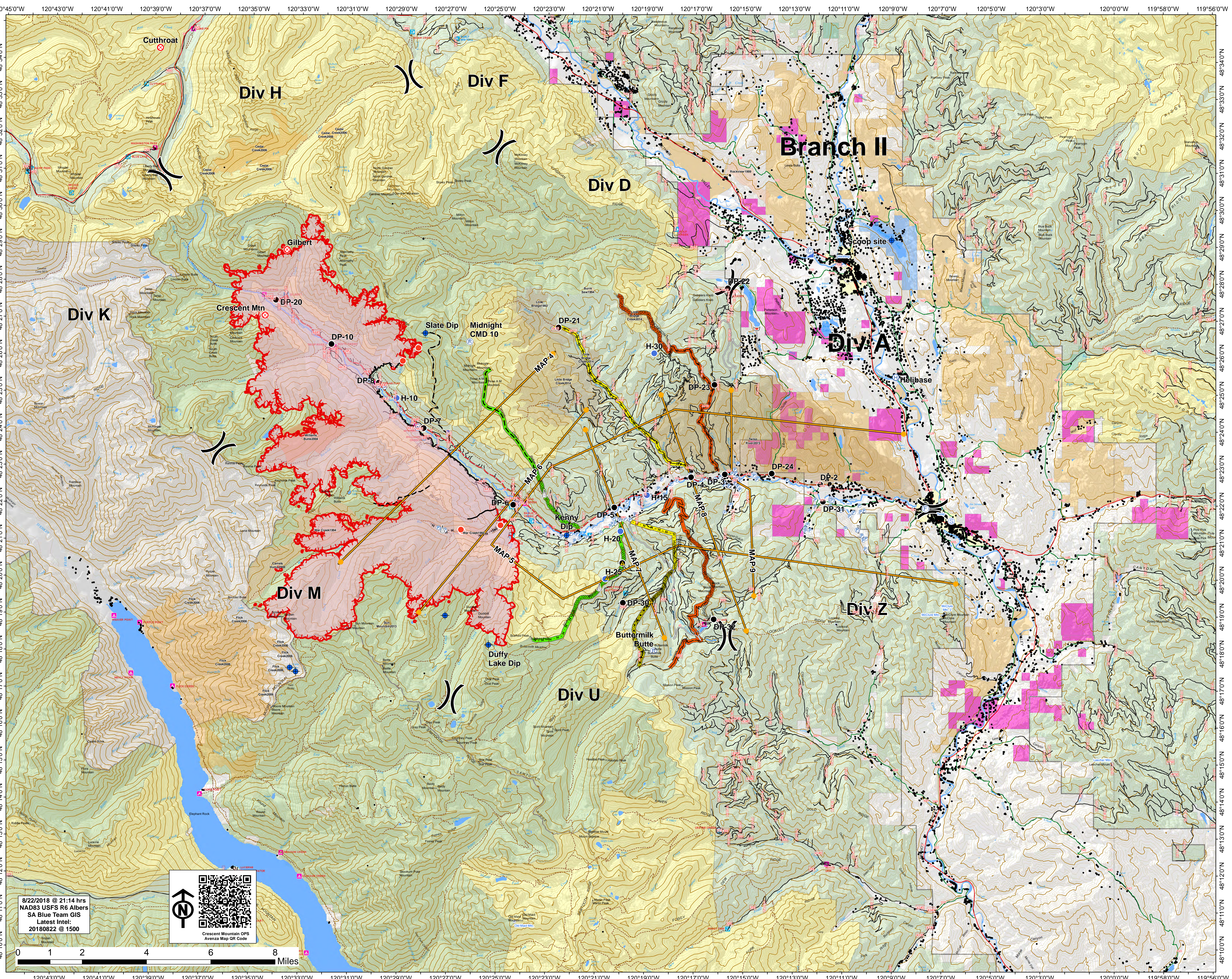




Operations  
Map  
Approx Acreage:  
32,907

- Waters Daily Fire Perimeter
- Stream
- Structure
- Wilderness
- Roadway District
- Roadless Conservation
- Diamond Creek Fire
- Camp
- Dip Site
- Drop Point
- Fire Origin
- Fire Station
- Gate
- Helibase
- Hot Spot
- Incident Command Post
- Lookout
- Pump
- Repeater
- Retardant Mud Pit
- Safety Zone
- Sling Site
- Staging Area
- Water Source
- Value at Risk
- Division Break
- Uncontrolled Fire Edge
- Completed Line
- Completed Dicer Line
- H - H Completed Hand Line
- R - R Road as Completed Line
- Access or Improved Road
- Proposed Dicer Line
- Planned Fire Line
- Management Action Point
- Temp River Road
- County Road
- USFS Road
- Trail
- Contingency
- primary
- alternate
- contingency
- Fire History
- 1992 - 1999
- 2004
- 2006
- 2008
- 2013
- 2014
- 2015
- OWNER
- BLM
- FIS
- MSF
- NPS
- FUD
- PWT
- USFWS
- W
- City or Municipality
- WA Dept of Fish
- WA State Parks
- Washington Dept



8/22/2018 @ 21:14 hrs  
NAD83 USFS R6 Albers  
SA Blue Team GIS  
Latest Intel:  
20180822 @ 1500

