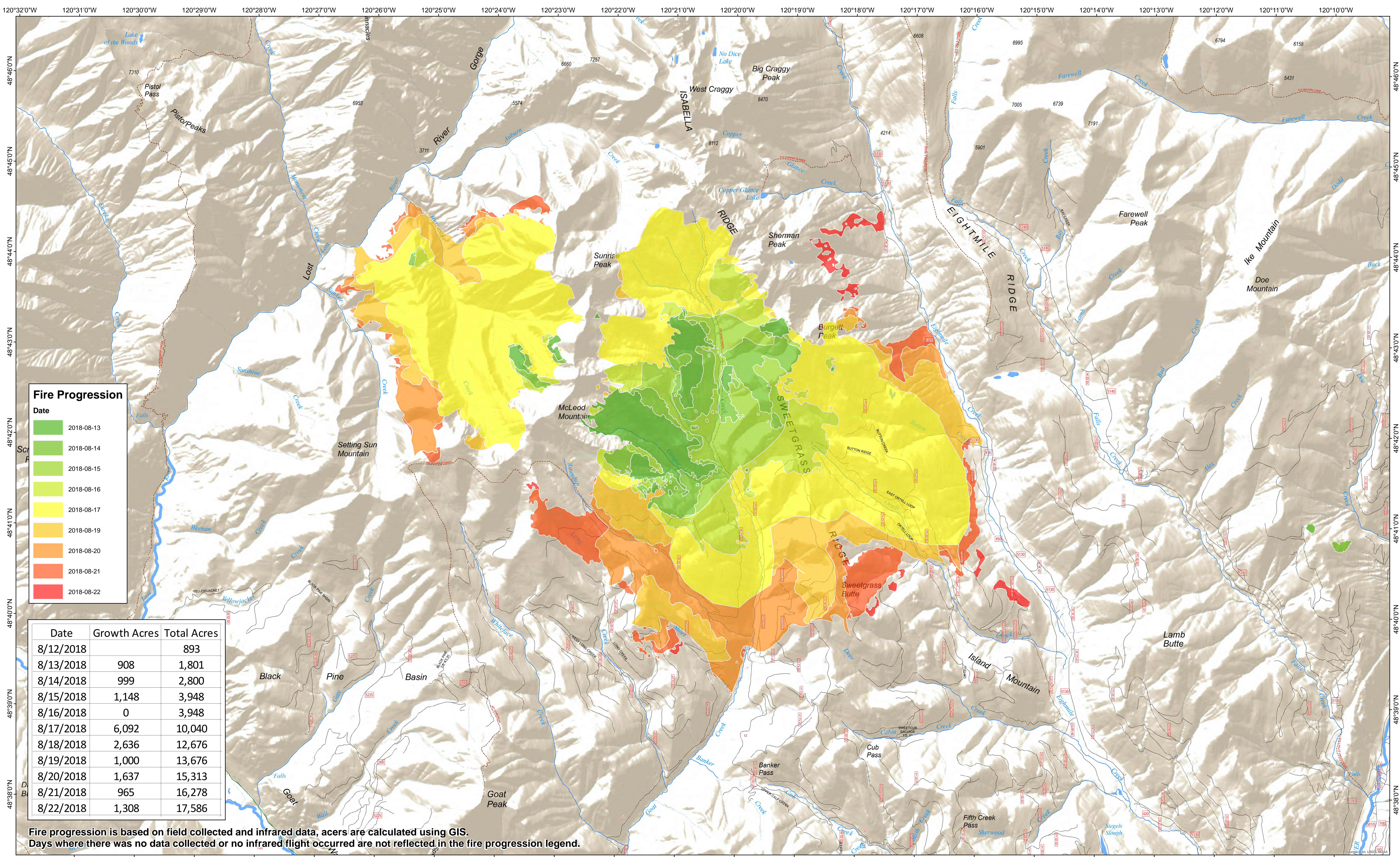




Fire Progression Map

McLeod Fire WA-OWF-000522 Approximate Acreage: 17,586

08/23/2018



Fire Progression

Date

- 2018-08-13
- 2018-08-14
- 2018-08-15
- 2018-08-16
- 2018-08-17
- 2018-08-19
- 2018-08-20
- 2018-08-21
- 2018-08-22

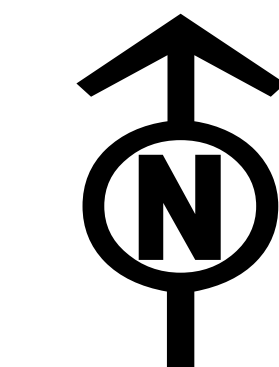
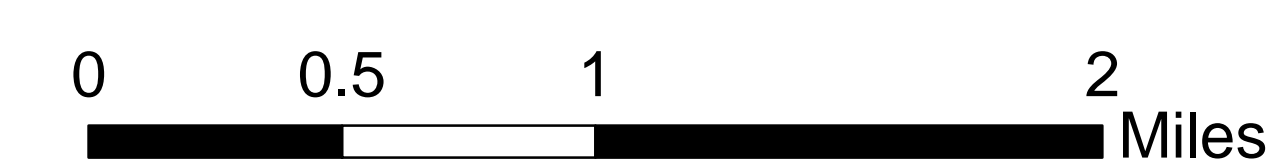
Date	Growth Acres	Total Acres
8/12/2018	893	893
8/13/2018	908	1,801
8/14/2018	999	2,800
8/15/2018	1,148	3,948
8/16/2018	0	3,948
8/17/2018	6,092	10,040
8/18/2018	2,636	12,676
8/19/2018	1,000	13,676
8/20/2018	1,637	15,313
8/21/2018	965	16,278
8/22/2018	1,308	17,586

Fire progression is based on field collected and infrared data, acres are calculated using GIS. Days where there was no data collected or no infrared flight occurred are not reflected in the fire progression legend.

- Twisp River Road
- City Road
- Trail
- Ranger District
- Highway
- USFS road
- Towns
- County Road
- Railroad



Daily Map Products



08/21/2018 @ 1150
NAD 83 USFS RG Albers (Meters)
SA Blue Team GIS
Latest Intel: 20180822 @ 1700