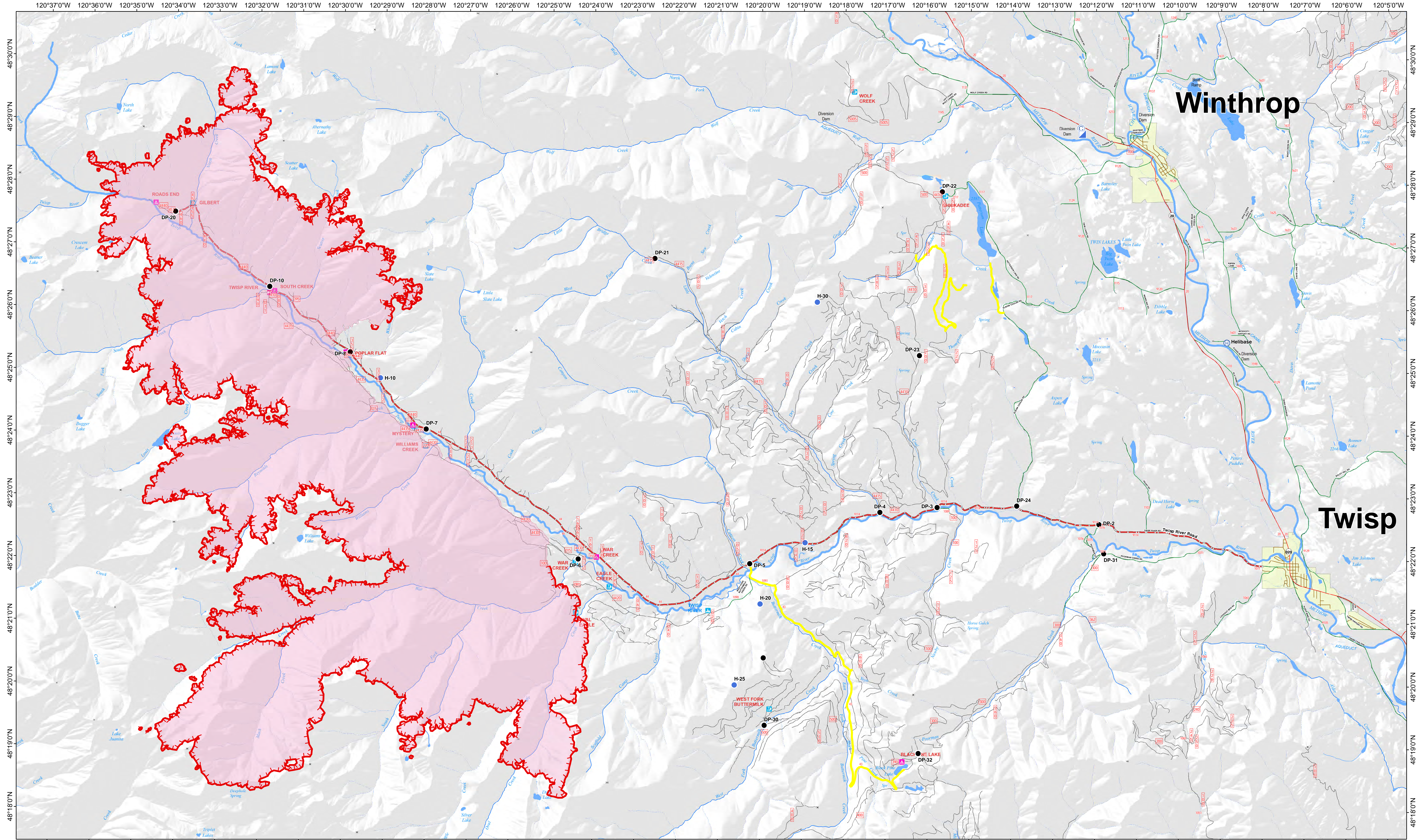




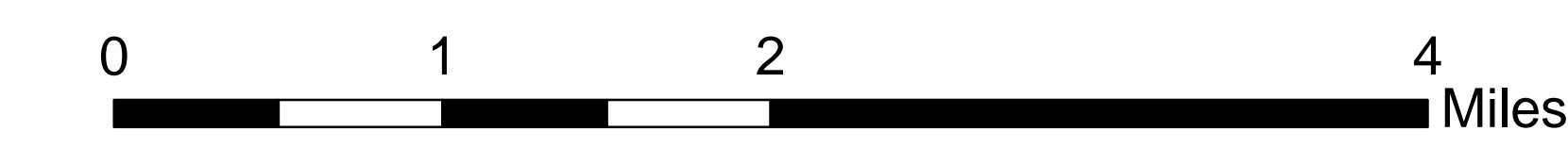
# Transportation Map

# Crescent Mountain Fire WA-OWF-000428

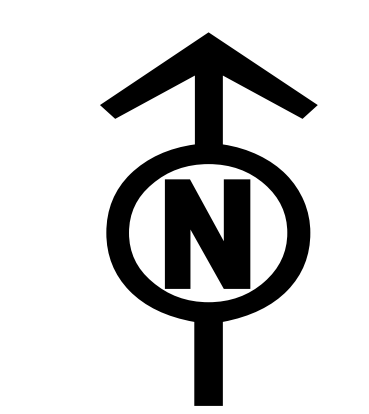
08/23/2018



- Camp
- Drop Point
- ⊕ Helibase
- Helispot
- Incident Command Post
- Towns
- Wildfire Daily Fire Perimeter
- Uncontrolled Fire Edge
- Access or Improved Road
- Twisp River Road
- Highway
- County Road
- City Road
- USFS road



**Approx Acreage: 32,907**



08/22/2018 @ 2200  
AD 83 USFS R6 Albers (Meters)  
SA Blue Team  
Latest Intel: 20180822 @ 1500