

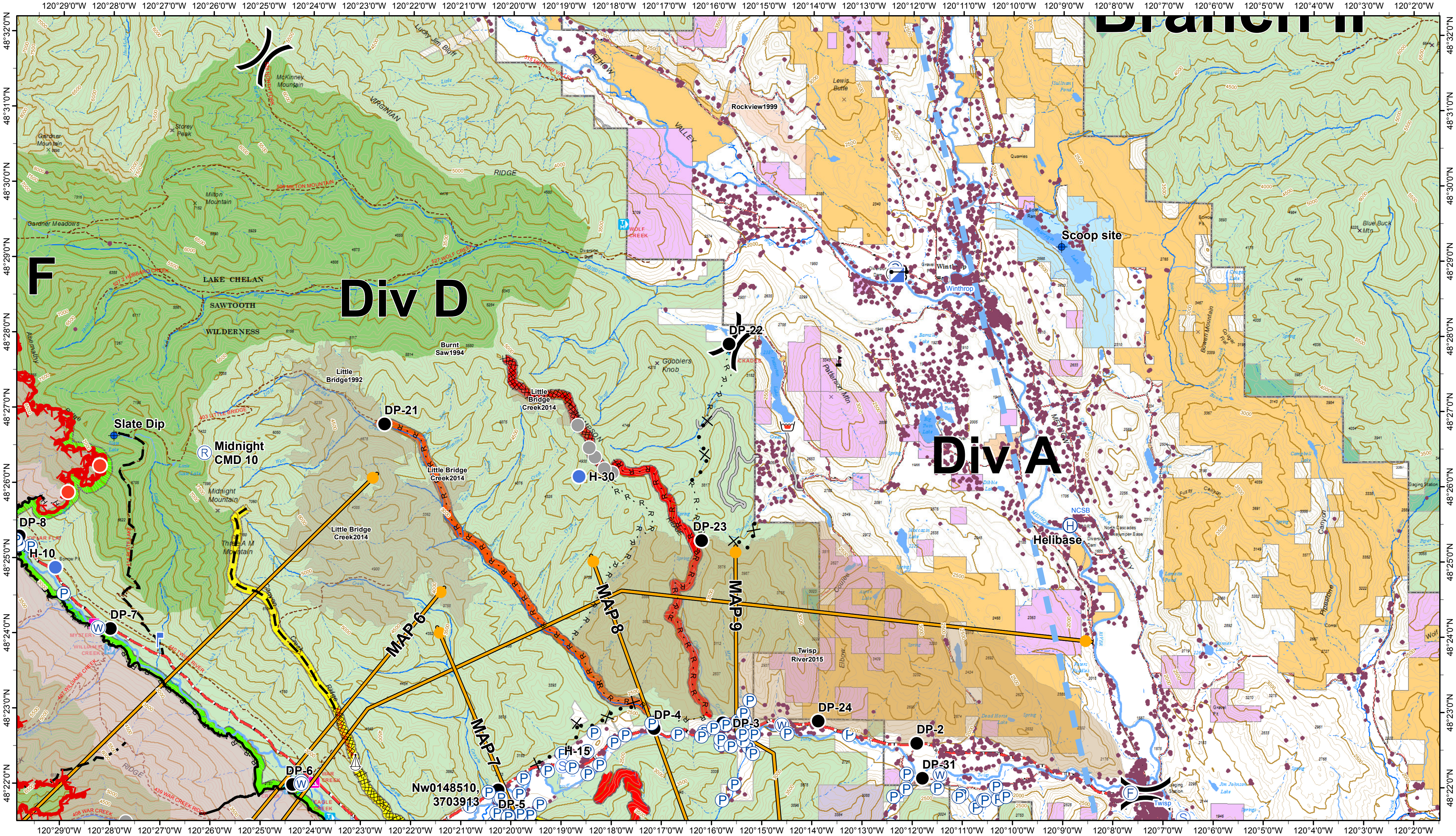


Div A / D Map

Crescent Mountain Fire WA-OWF-000428 Approx Acreage: 42,784

McLeod Fire WA-OWF-000522 Approx Acreage: 21,585

08/26/2018



Wildfire Daily Fire Perimeter	Dip Site	Incident Command Post	Safety Zone	Water Tank	Uncontrolled Fire Edge	Access or Improved Road	Contingency Line	Twisp River Road	OWNER	PUD	City or Municipality
Residence	Drop Point	Lookout	Sling Site	Value at Risk	Completed Line	Planned Fire Line	primary	Highway	BLM	PVT	WA Dept of F&W
Ranger District	Fire Origin	Pump	Staging Area	Division Break	Completed Dozer Line	Proposed Dozer Line	alternate	County Road	FS	USFWS	WA State Parks
Wilderness	Fire Station	Repeater	Water Source	Branch Break	H - H Completed Hand Line	Management Action Point	contingency	City Road	MSF	W	Washington DNR
	Helibase	Retardant/Mud Pit			R - R Road as Completed Line			USFS road	NPS		
	Helispot							Trail			

Roads

OPER_MAINT_LEVEL

- 1 - BASIC CUSTODIAL CARE (CLOSED)
- 2 - HIGH CLEARANCE VEHICLES
- 3 - SUITABLE FOR PASSENGER CARS
- 4 - MODERATE DEGREE OF USER COMFORT
- 5 - HIGH DEGREE OF USER COMFORT
- CLOSED/DECOMM

2018-08-26 @ 01:32
NAD 83 USFS R6 Albers (Meters)
SA Blue Team GIS
Latest Intel: 20180825 @ 0042

0 0.5 1 2 Miles

Contour Interval 100 Feet