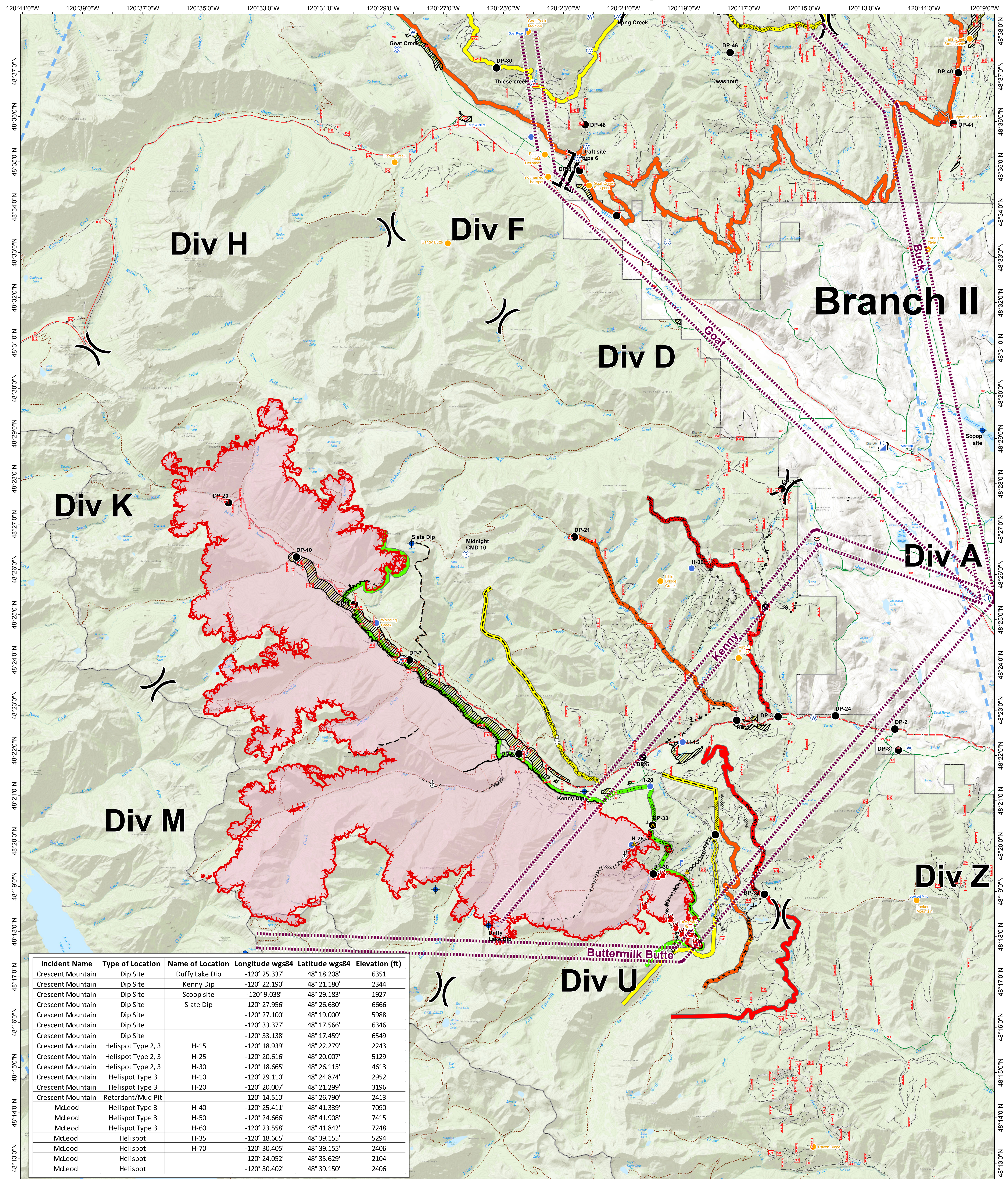


Air Ops Helibase

Crescent Mountain Fire

WA-OWF-000428

Acreage: 42,784



Incident Name	Type of Location	Name of Location	Longitude wgs84	Latitude wgs84	Elevation (ft)
Crescent Mountain	Dip Site	Duffy Lake Dip	-120° 25.337'	48° 18.208'	6351
Crescent Mountain	Dip Site	Kenny Dip	-120° 22.190'	48° 21.180'	2344
Crescent Mountain	Dip Site	Scoop site	-120° 9.038'	48° 29.183'	1927
Crescent Mountain	Dip Site	Slate Dip	-120° 27.956'	48° 26.630'	6666
Crescent Mountain	Dip Site		-120° 27.100'	48° 19.000'	5988
Crescent Mountain	Dip Site		-120° 33.377'	48° 17.566'	6346
Crescent Mountain	Dip Site		-120° 33.138'	48° 17.459'	6549
Crescent Mountain	Helispot Type 2, 3	H-15	-120° 18.939'	48° 22.279'	2243
Crescent Mountain	Helispot Type 2, 3	H-25	-120° 20.616'	48° 20.007'	5129
Crescent Mountain	Helispot Type 2, 3	H-30	-120° 18.665'	48° 26.115'	4613
Crescent Mountain	Helispot Type 3	H-10	-120° 29.110'	48° 24.874'	2952
Crescent Mountain	Helispot Type 3	H-20	-120° 20.007'	48° 21.299'	3196
Crescent Mountain	Retardant/Mud Pit		-120° 14.510'	48° 26.790'	2413
McLeod	Helispot Type 3	H-40	-120° 25.411'	48° 41.339'	7090
McLeod	Helispot Type 3	H-50	-120° 24.666'	48° 41.908'	7415
McLeod	Helispot Type 3	H-60	-120° 23.558'	48° 41.842'	7248
McLeod	Helispot	H-35	-120° 18.665'	48° 39.155'	5294
McLeod	Helispot	H-70	-120° 30.405'	48° 39.155'	2406
McLeod	Helispot		-120° 24.052'	48° 35.629'	2104
McLeod	Helispot		-120° 30.402'	48° 39.150'	2406

120°39'0"W 120°37'0"W 120°35'0"W 120°33'0"W 120°31'0"W 120°29'0"W 120°27'0"W 120°25'0"W 120°23'0"W 120°21'0"W 120°19'0"W 120°17'0"W 120°15'0"W 120°13'0"W 120°11'0"W 120°9'0"W

48°13'0"N 48°14'0"N 48°15'0"N 48°16'0"N 48°17'0"N 48°18'0"N 48°19'0"N 48°20'0"N 48°21'0"N 48°22'0"N 48°23'0"N 48°24'0"N 48°25'0"N 48°26'0"N 48°27'0"N 48°28'0"N 48°29'0"N 48°30'0"N 48°31'0"N 48°32'0"N 48°33'0"N 48°34'0"N 48°35'0"N 48°36'0"N 48°37'0"N 48°38'0"N

--- Flight Routes
● Fire Location
○ Retardant/Mud Pit
○ Safety Zone
○ Sling Site
○ Spot Fire
○ Staging Area
○ Water Source
○ Camp
○ Helibase
○ Helispot
X Closure
● Dip Site
○ Lookout
○ Repeater
○ MVRD Helispot
○ Retardant Avoidance Areas
--- Uncontrolled Fire Edge
--- Completed Line
--- Completed Dozer Line
--- Completed Hand Line
--- R - R - Road as Completed Line
--- Access or Improved Road
--- Planned Dozer Line
--- Planned Fire Line
--- Temporary Flight Restriction
--- Other
--- Contingency Lines
--- primary
--- alternate
--- contingency
--- emergency
--- Wildfire Daily Fire Perimeter
--- Twisp River Road
--- Highway
--- County Road
--- USFS_Road_Clip
--- Trails_Clip
--- Radio Tower

2018-08-26 @ 0100
 NAD 83 USFS R6 Albers (Meters)
 SA Blue Team GIS
 Latest Intel: 20180825 @ 0042
08/26/2018

0 0.5 1 2 3 4 Miles