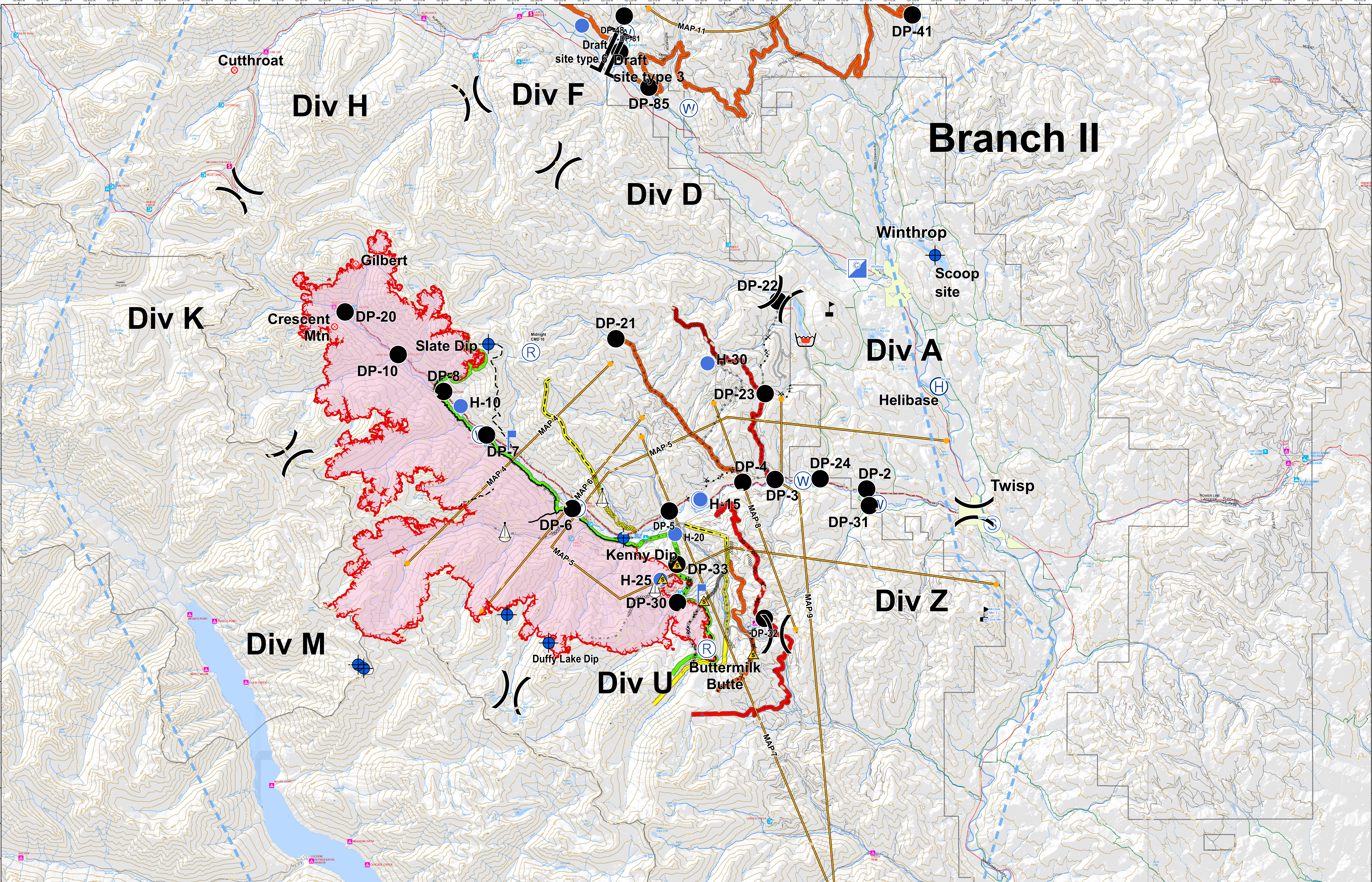




Briefing Map

Crescent Mountain Fire WA-OWF-000428

08/26/2018

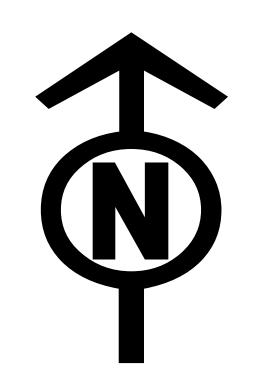


- Safety Zone
- Fire Origin
- Incident Command Post
- Repeater
- Staging Area
- Division Break
- Camp
- Helibase
- Lookout
- Retardant/Mud Pit
- Water Source
- Dip Site
- Helispot
- Sling Site
- Value at Risk
- Drop Point

- Uncontrolled Fire Edge
- Access or Improved Road
- Contingency Lines primary
- Twisp River Road
- Completed Line
- Proposed Dozer Line
- Contingency Lines alternate
- Highway
- Completed Dozer Line
- Planned Fire Line
- Contingency Lines contingency
- County Road
- Completed Hand Line
- Temporary Flight Restriction
- Contingency Lines emergency
- City Road
- Road as Completed Line
- Management Action Point
- USFS road
- Ranger District



Approx Acreage: 42,784



8/26/2018 @ 00:28
NAD 83 USFS R6 Albers (Meters)
SA Blue Team GIS
Latest Intel: 20180824 @ 2353