



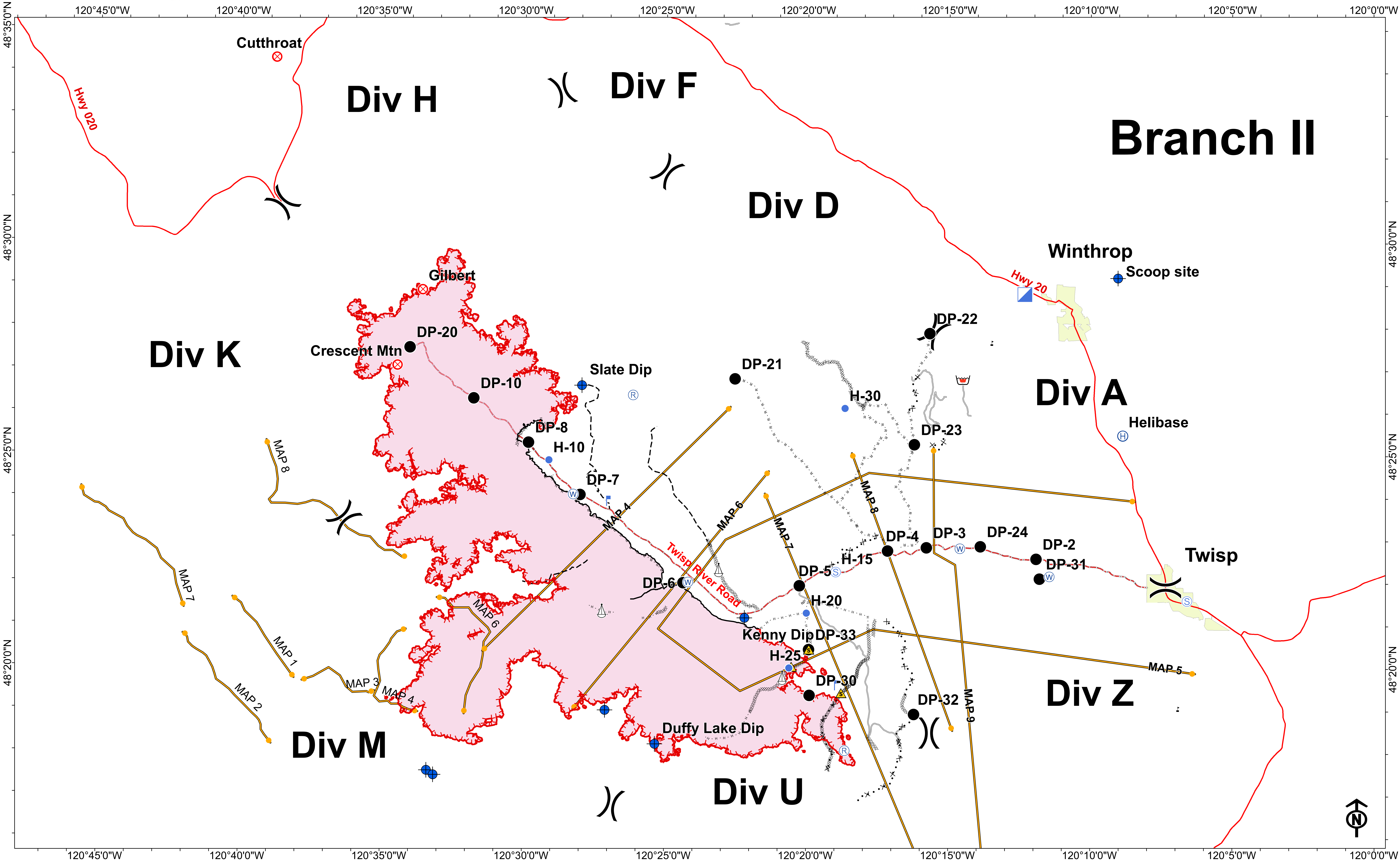
# IAP Map

# Crescent Mountain Fire

WA-OWF-000428

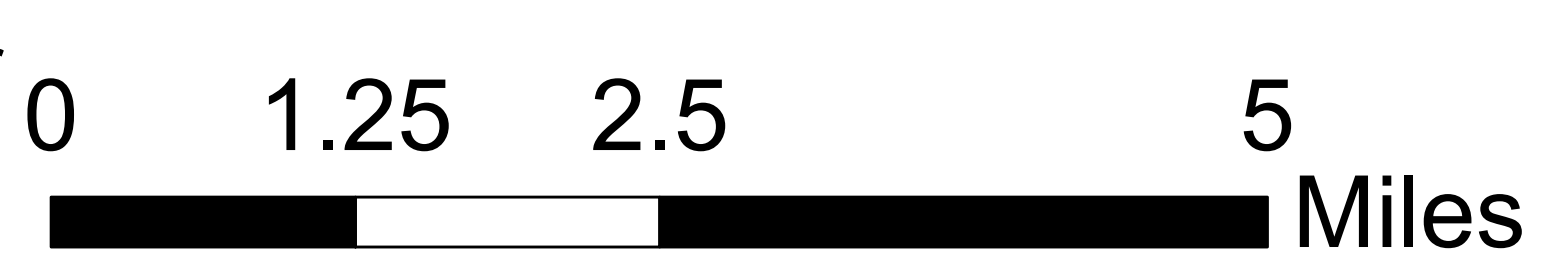
Approx Acres: 42,784

08/26/2018



- Camp
- Fire Origin
- Lookout
- Sling Site
- Dip Site
- Helibase
- Repeater
- Staging Area
- Drop Point
- Helispot
- Retardant/Mud Pit
- Water Source
- Incident Command Post
- Safety Zone
- Value at Risk

- Uncontrolled Fire Edge
- Completed Line
- Completed Dozer Line
- Completed Hand Line
- Road as Completed Line
- Access or Improved Road
- Proposed Dozer Line
- Planned Fire Line
- Other
- Wildfire Daily Fire Perimeter
- Twisp River Road
- Highway
- Towns



8/25/2018 @ 1643  
 NAD 83 USFS R6 Albers (Meters)  
 SA Blue Team GIS  
 Latest Intel: 08-24-18 @ 2353