

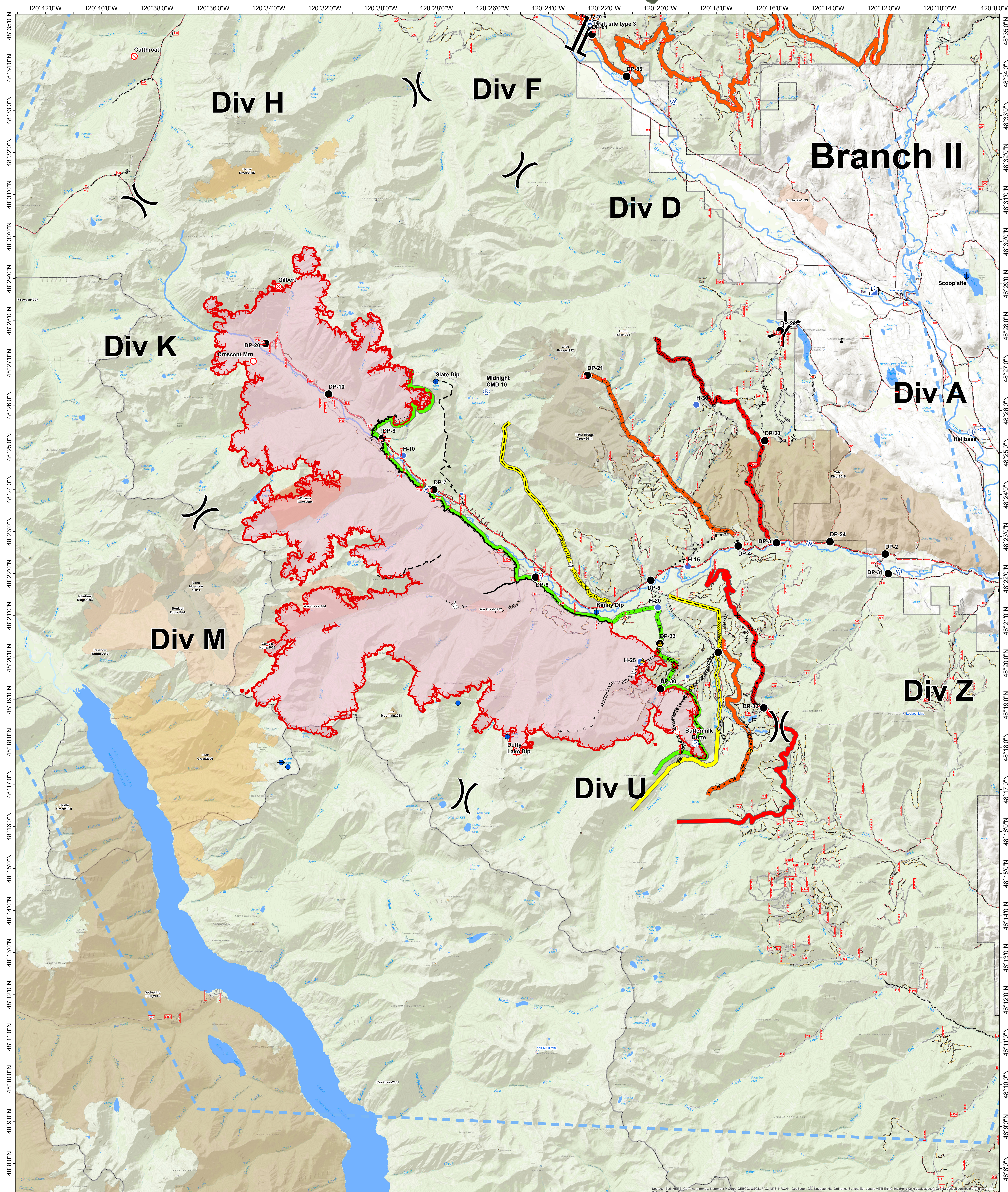
Safety Ops Map

08/26/2018

Crescent Mountain Fire

WA-OWF-000428

Approximate Acreage: 40,149



| | | | | | | |
|--|---|--|---|---|--|--|
| <ul style="list-style-type: none"> Camp Dip Site Drop Point Fire Origin Gate Helibase Helisport Incident Command Post Lookout Repeater Retardant/Mud Pit Safety Zone Sling Site Spot Fire Staging Area Water Source Value at Risk Branch Break Uncontrolled Fire Edge Completed Line | <ul style="list-style-type: none"> Completed Dozer Line Completed Hand Line Road as Completed Line Access or Improved Road Proposed Dozer Line Planned Fire Line Temporary Flight Restriction Other | <p>Contingency Lines</p> <ul style="list-style-type: none"> primary alternate contingency emergency | <p>Fire History</p> <ul style="list-style-type: none"> 1992 - 1999 2004 2006 2008 2013 2014 2015 | <p>Roads_OKW</p> <ul style="list-style-type: none"> 1 - BASIC CUSTODIAL CARE (CLOSED) 2 - HIGH CLEARANCE VEHICLES 3 - SUITABLE FOR PASSENGER CARS 4 - MODERATE DEGREE OF USER COMFORT Ranger District Clip | <p>Twisp River Road</p> <ul style="list-style-type: none"> Twisp River Road | <p>Other</p> <ul style="list-style-type: none"> Other |
|--|---|--|---|---|--|--|

All Products QR Code

8/26/2018 @ 0147
NAD 83 USFS R6 Albers (Meters)
SA Blue Team GIS
Latest Intel: 20180824 @ 2353

0 0.5 1 2 3 4 Miles