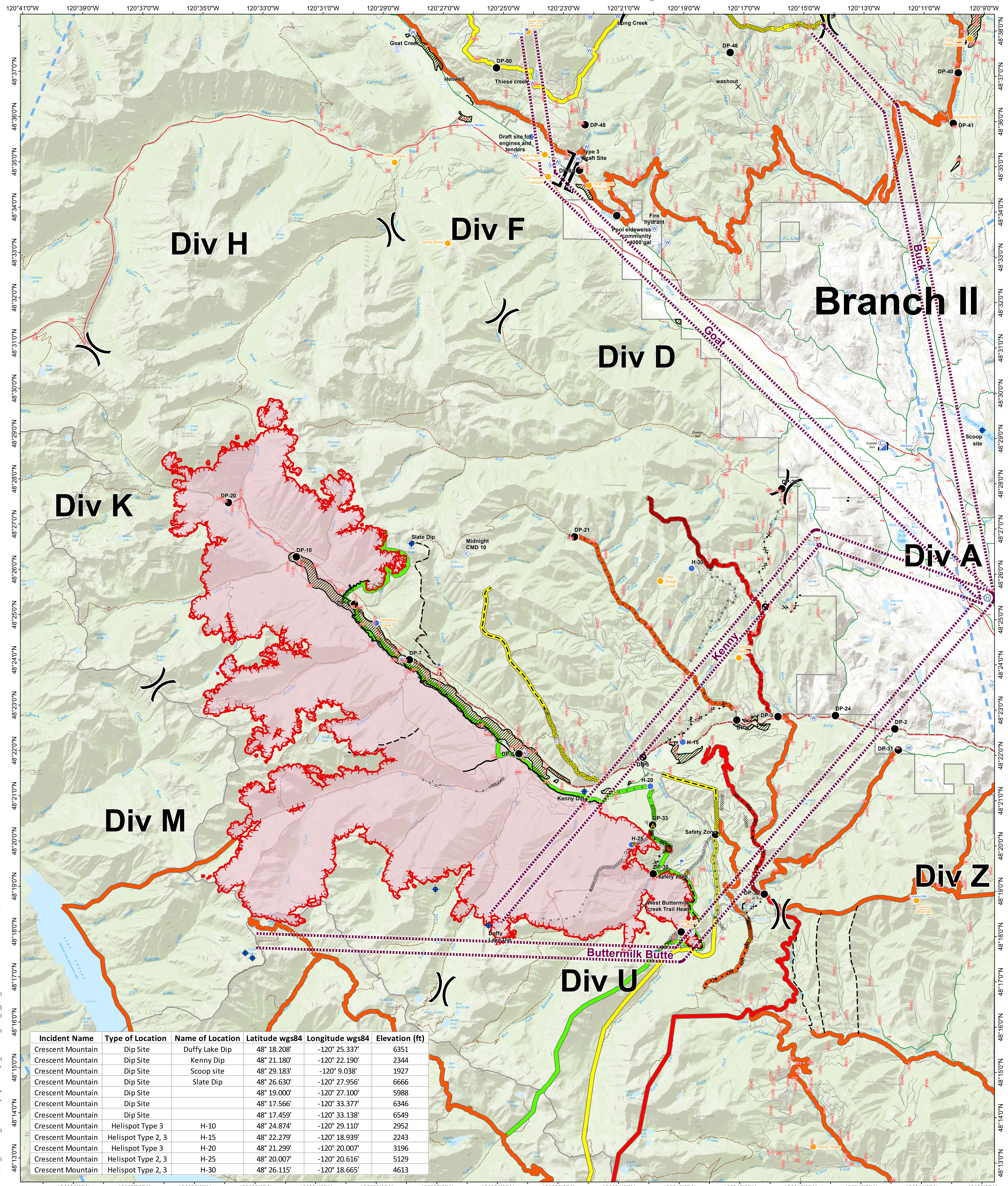


Air Ops Helibase

Crescent Mountain Fire

WA-OWF-000428

Acreage: 42,942



Incident Name	Type of Location	Name of Location	Latitude wgs84	Longitude wgs84	Elevation (ft)
Crescent Mountain	Dip Site	Duffy Lake Dip	48° 18.208'	-120° 25.337'	6351
Crescent Mountain	Dip Site	Kenny Dip	48° 21.180'	-120° 22.190'	2344
Crescent Mountain	Dip Site	Scoop site	48° 29.183'	-120° 9.038'	1927
Crescent Mountain	Dip Site	Slate Dip	48° 26.630'	-120° 27.956'	6666
Crescent Mountain	Dip Site		48° 19.000'	-120° 27.100'	5988
Crescent Mountain	Dip Site		48° 17.566'	-120° 33.377'	6346
Crescent Mountain	Dip Site		48° 17.459'	-120° 33.138'	6549
Crescent Mountain	Helispot Type 3	H-10	48° 24.874'	-120° 29.110'	2952
Crescent Mountain	Helispot Type 2, 3	H-15	48° 22.279'	-120° 18.939'	2243
Crescent Mountain	Helispot Type 3	H-20	48° 21.299'	-120° 20.007'	3196
Crescent Mountain	Helispot Type 2, 3	H-25	48° 20.007'	-120° 20.616'	5129
Crescent Mountain	Helispot Type 2, 3	H-30	48° 26.115'	-120° 18.665'	4613

Y:\2018_Crescent Mountain\projects\air_ops_helibase_anis_e_port_Crescent Mountain\WAOWF000428.mxd m.schindler

Legend

- Flight Routes
- Helibase
- Unimproved Landing Area
- Helispot
- Incident Command Post
- Camp
- Closure
- Dip Site
- Drop Point
- Sling Site
- Staging Area
- Water Source
- Water Tank
- Value at Risk
- Retardant/Mud Pit
- Safety Zone
- Uncontrolled Fire Edge
- Completed Line
- Completed Dozer Line
- Completed Hand Line
- Road as Completed Line
- Access or Improved Road
- Proposed Dozer Line
- Planned Fire Line
- Aerial Retardant Drop
- Temporary Flight Restriction
- Other

Contingency Lines

- primary
- alternate
- contingency
- emergency
- Twisp River Road
- Highway
- County Road
- USFS_Road_Clip
- Trails_Clip
- Wildfire Daily Fire Perimeter
- Retardant Avoidance Areas

All Products QR Code

8/28/2018 @ 0011
NAD 83 USFS R6 Albers (Meters)
SA Blue Team GIS
Latest Intel: 201808226 @ 1030 hrs

08/28/2018

0 0.5 1 2 3 4 Miles