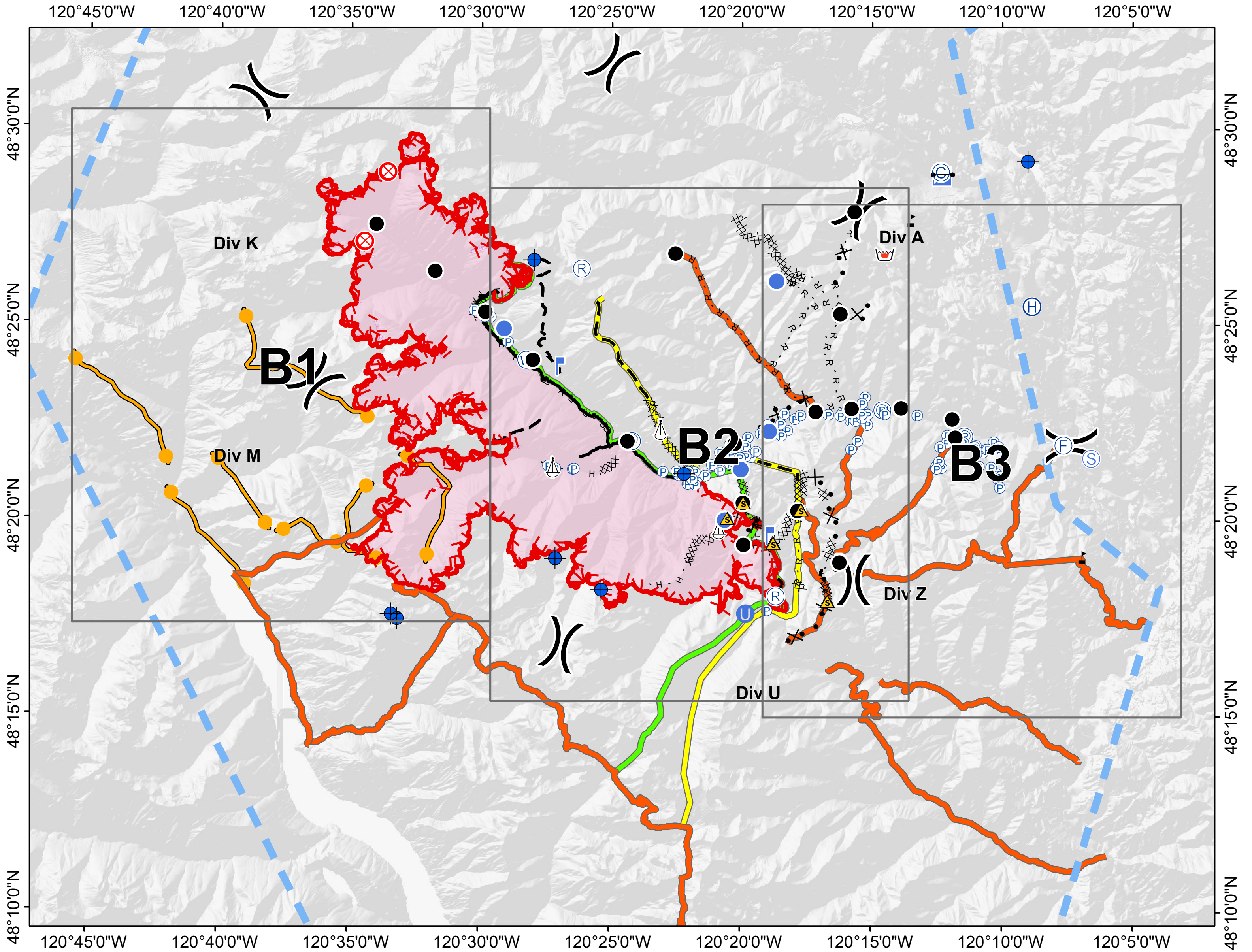




GRID INDEX Crescent Mountain



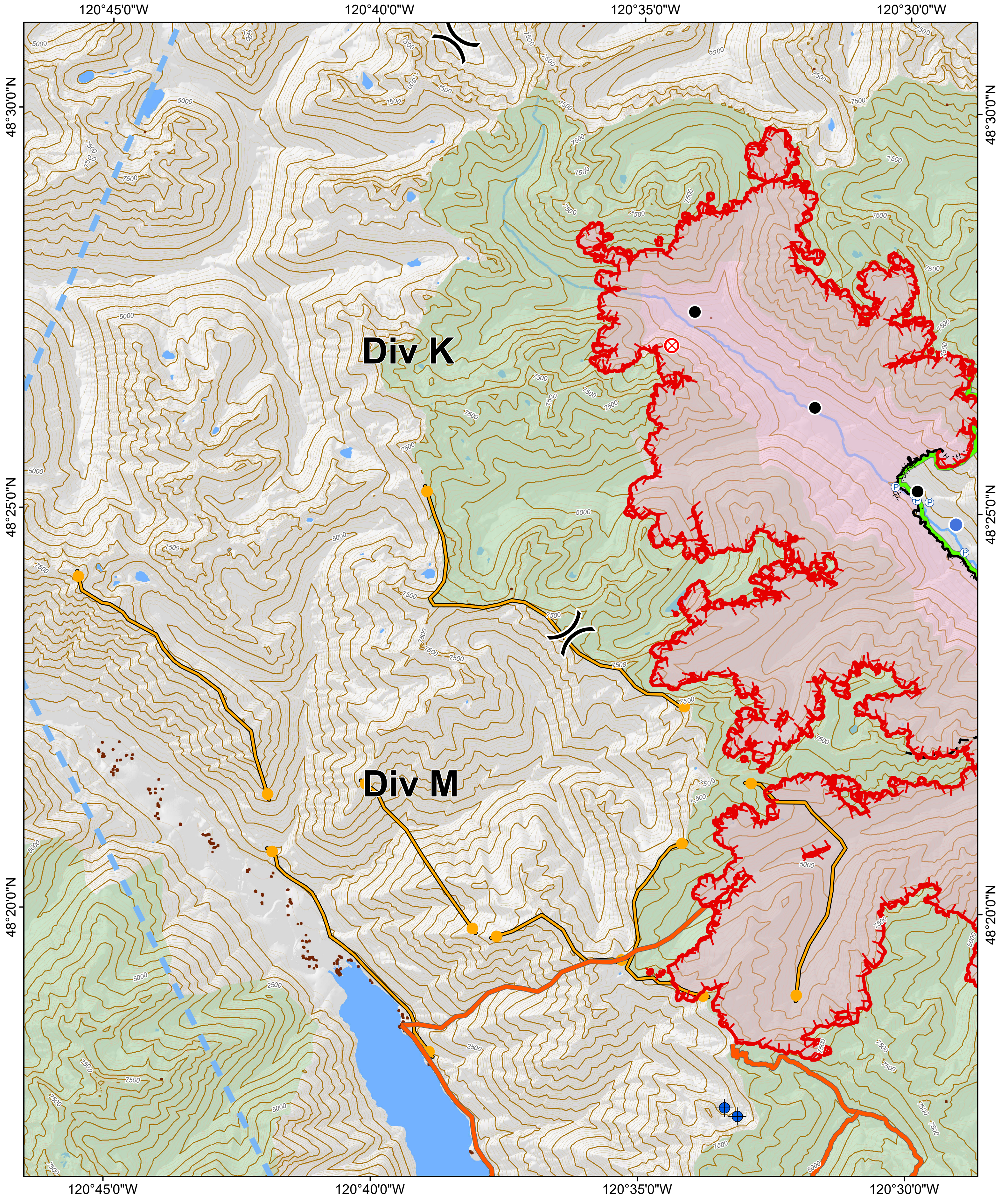
	Aerial Hazard		Hot Spot		Water Source		Completed Line		Fire Break Planned or Incomplete		Escape Route
	Aerial Ignition		Incident Base		Water Tank		Completed Dozer Line		Planned Fire Line		Highlighted Manmade Feature
	Airstrip or Airport		Incident Command Post		Restricted Water Source		Completed Hand Line		Aerial Hazard		Ridge/Geographic Feature
	Camp		Possible IR Heat Source		Wind Speed & Direction		Road as Completed Line		Aerial Retardant Drop		Fire Spread Prediction
	Closure		IR Isolated Heat Source		Value at Risk		Access or Improved Road		Aerial Foam Drop		Management Action Point
	Dip Site		Internet Access		Unknown		Line Break Completed		Aerial Retardant Drop		Edge of Imagery
	Drop Point		Landmark		Segment Break		Completed Plow Line		Aerial Water Drop		Other
	Fire Location		Lookout		Zone Break		Explosive Line		Air Tanker Foam		Unknown
	Fire Origin		Mobile Weather Unit		Division Break		Proposed Burnout		Air Tanker Retardant		primary
	Fire Station		Pump		Branch Break		Active Burnout		Helitanker Foam		alternate
	First Aid Station		Repeater		Uncontrolled Fire Edge		Completed Burnout		Helitanker Water		contingency
	Gate		Retardant/Mud Pit				Proposed Dozer Line		Temporary Flight Restriction		Structure
	Helibase		Safety Zone								1 - Basic Custodial Care (Closed)
	Unimproved Landing Area		Sling Site								2 - High Clearance Vehicles
	Helispot		Spot Fire								3 - Suitable for Passenger Cars
			Staging Area								4 - Moderate Degree of User Comfort
											5 - High Degree of User Comfort
											CLOSED/DECOMM



08/28/2018
 Day Shift
Map Page:
B1

Crescent Mountain Fire
 WA-OWF-000422
 42,942 Acres
 as of 8/26 @ 1030

McLeod Fire
 WA-OWF-000522
 21,659 Acres
 as of 8/26 @ 1100





08/28/2018
Day Shift
Map Page:
B2

Crescent Mountain Fire
WA-OWF-000422
42,942 Acres
as of 8/26 @ 1030

McLeod Fire
WA-OWF-000522
21,659 Acres
as of 8/26 @ 1100



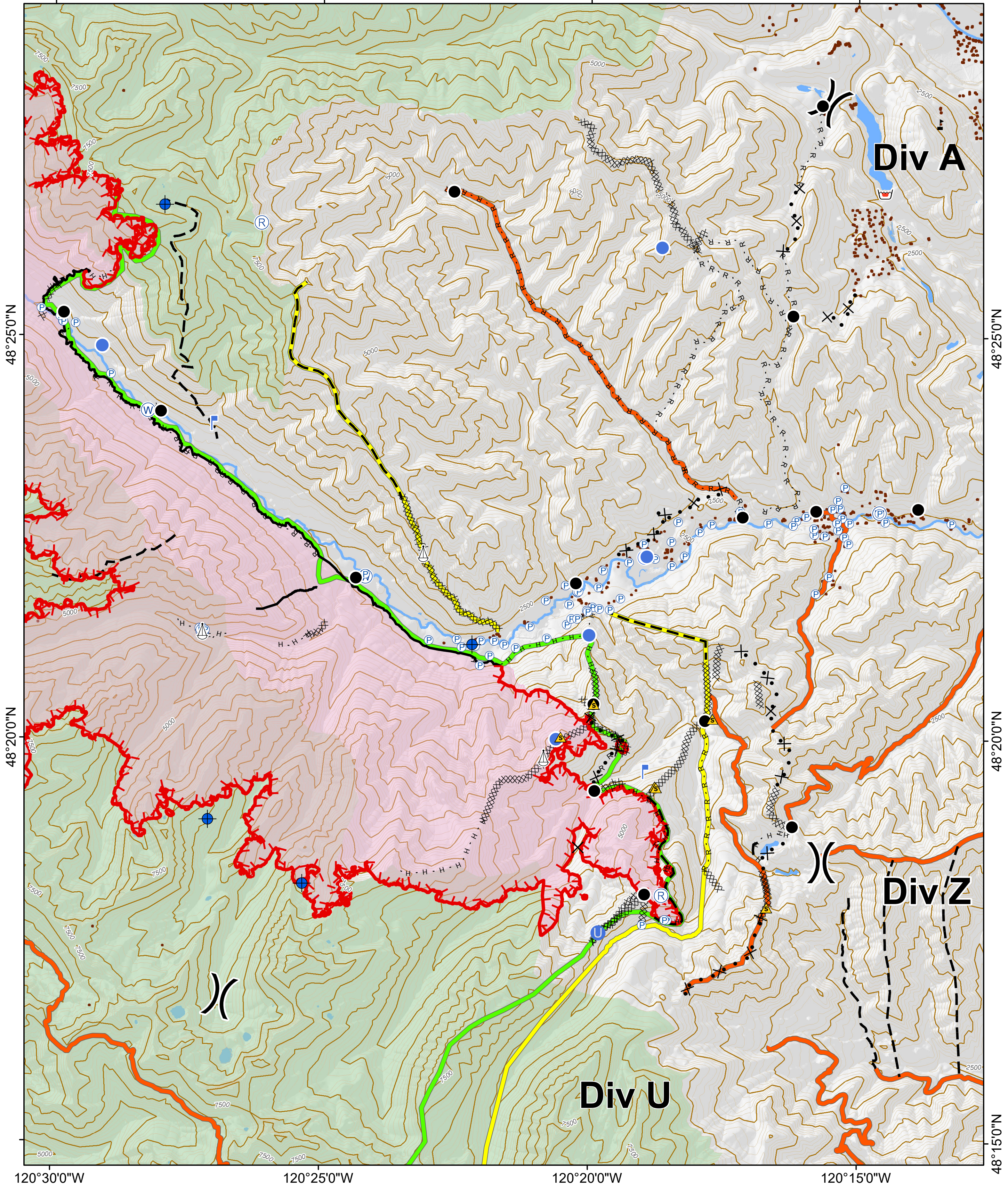
0 0.5 1 2 Miles

120°30'0"W

120°25'0"W

120°20'0"W

120°15'0"W



48°25'0"N

48°25'0"N

48°20'0"N

48°20'0"N

120°30'0"W

120°25'0"W

120°20'0"W

120°15'0"W

48°15'0"N



08/28/2018
 Day Shift
Map Page:
B3

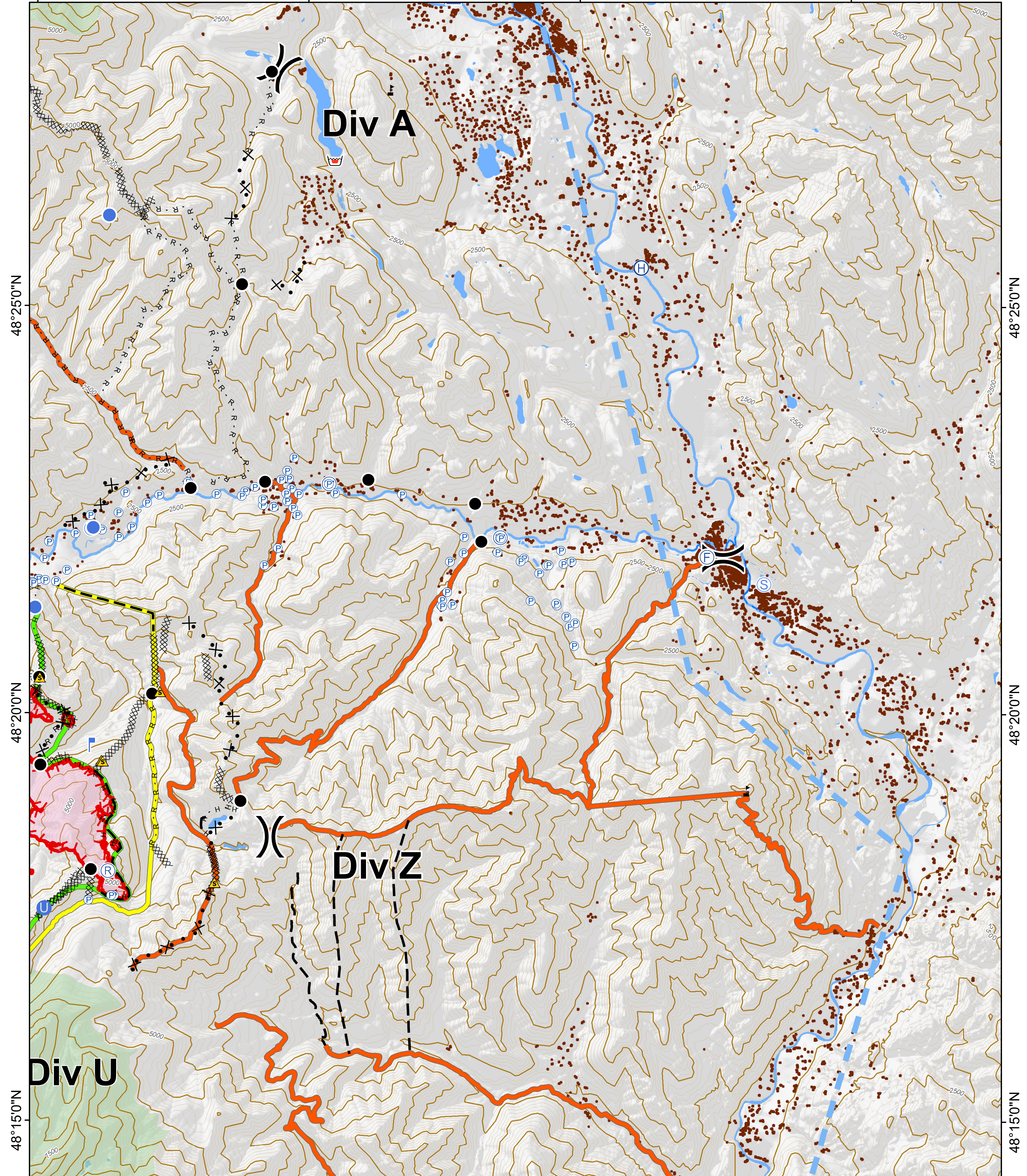
Crescent Mountain Fire
 WA-OWF-000422
 42,942 Acres
 as of 8/26 @ 1030

McLeod Fire
 WA-OWF-000522
 21,659 Acres
 as of 8/26 @ 1100



0 0.5 1 2 Miles

120°20'0"W 120°15'0"W 120°10'0"W 120°5'0"W



120°20'0"W 120°15'0"W 120°10'0"W 120°5'0"W

48°15'0"N 48°20'0"N 48°25'0"N