



GRID INDEX McLeod



120°35'0"W

120°30'0"W

120°25'0"W

120°20'0"W

120°15'0"W

120°10'0"W

120°5'0"W

48°45'0"N

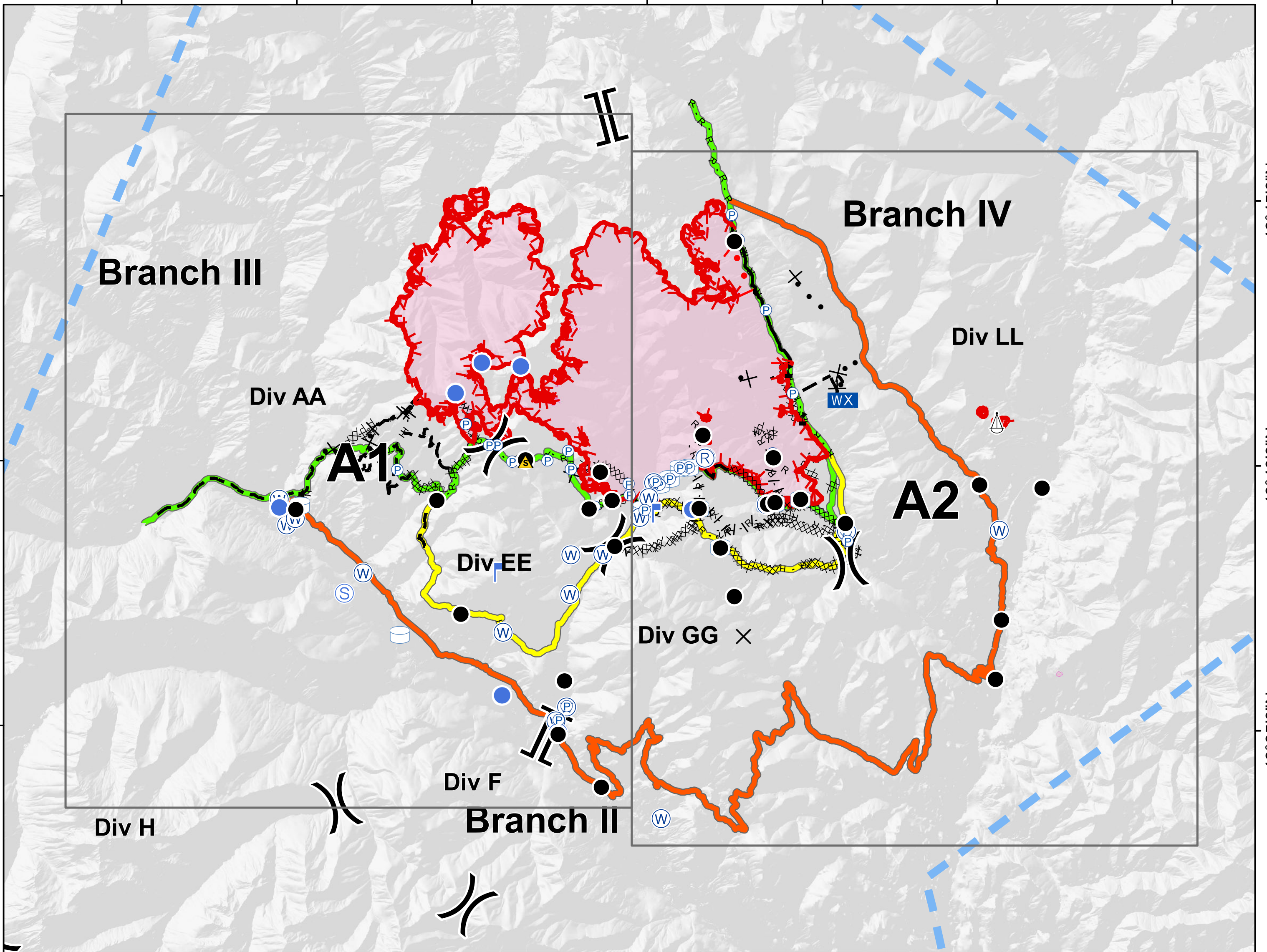
48°40'0"N

48°35'0"N

48°45'0"N

48°40'0"N

48°35'0"N



120°35'0"W

120°30'0"W

120°25'0"W

120°20'0"W

120°15'0"W

120°10'0"W

120°5'0"W

- | | | | | | | | | | | | |
|--|-------------------------|--|-------------------------|--|-------------------------|--|-------------------------|--|----------------------------------|--|-------------------------------------|
| | Aerial Hazard | | Hot Spot | | Water Source | | Completed Line | | Fire Break Planned or Incomplete | | Escape Route |
| | Aerial Ignition | | Incident Base | | Water Tank | | Completed Dozer Line | | Planned Fire Line | | Highlighted Manmade Feature |
| | Airstrip or Airport | | Incident Command Post | | Restricted Water Source | | Completed Hand Line | | Aerial Hazard | | Ridge/Geographic Feature |
| | Camp | | Possible IR Heat Source | | Wind Speed & Direction | | Road as Completed Line | | Aerial Retardant Drop | | Fire Spread Prediction |
| | Closure | | IR Isolated Heat Source | | Value at Risk | | Access or Improved Road | | Aerial Foam Drop | | Management Action Point |
| | Dip Site | | Internet Access | | Unknown | | Line Break Completed | | Aerial Ignition | | Edge of Imagery |
| | Drop Point | | Landmark | | Segment Break | | Completed Plow Line | | Aerial Retardant Drop | | Other |
| | Fire Location | | Lookout | | Zone Break | | Explosive Line | | Aerial Water Drop | | Unknown |
| | Fire Origin | | Mobile Weather Unit | | Division Break | | Proposed Burnout | | Air Tanker Foam | | primary |
| | Fire Station | | Pump | | Branch Break | | Active Burnout | | Air Tanker Retardant | | alternate |
| | First Aid Station | | Repeater | | Uncontrolled Fire Edge | | Completed Burnout | | Helitanker Foam | | contingency |
| | Gate | | Retardant/Mud Pit | | | | Proposed Dozer Line | | Helitanker Water | | Structure |
| | Helibase | | Safety Zone | | | | | | Temporary Flight Restriction | | 1 - Basic Custodial Care (Closed) |
| | Unimproved Landing Area | | Sling Site | | | | | | | | 2 - High Clearance Vehicles |
| | Helispot | | Spot Fire | | | | | | | | 3 - Suitable for Passenger Cars |
| | | | Staging Area | | | | | | | | 4 - Moderate Degree of User Comfort |
| | | | | | | | | | | | 5 - High Degree of User Comfort |
| | | | | | | | | | | | CLOSED/DECOMM |



08/28/2018
Day Shift
Map Page:
A1

Crescent Mountain Fire
WA-OWF-000422
42,942 Acres
as of 8/26 @ 1030

McLeod Fire
WA-OWF-000522
21,659 Acres
as of 8/26 @ 1100



0 0.5 1 2 Miles

120°35'0"W

120°30'0"W

120°25'0"W

120°20'0"W

48°45'0"N

48°40'0"N

48°35'0"N

48°45'0"N

48°40'0"N

48°35'0"N

Branch III

Div AA

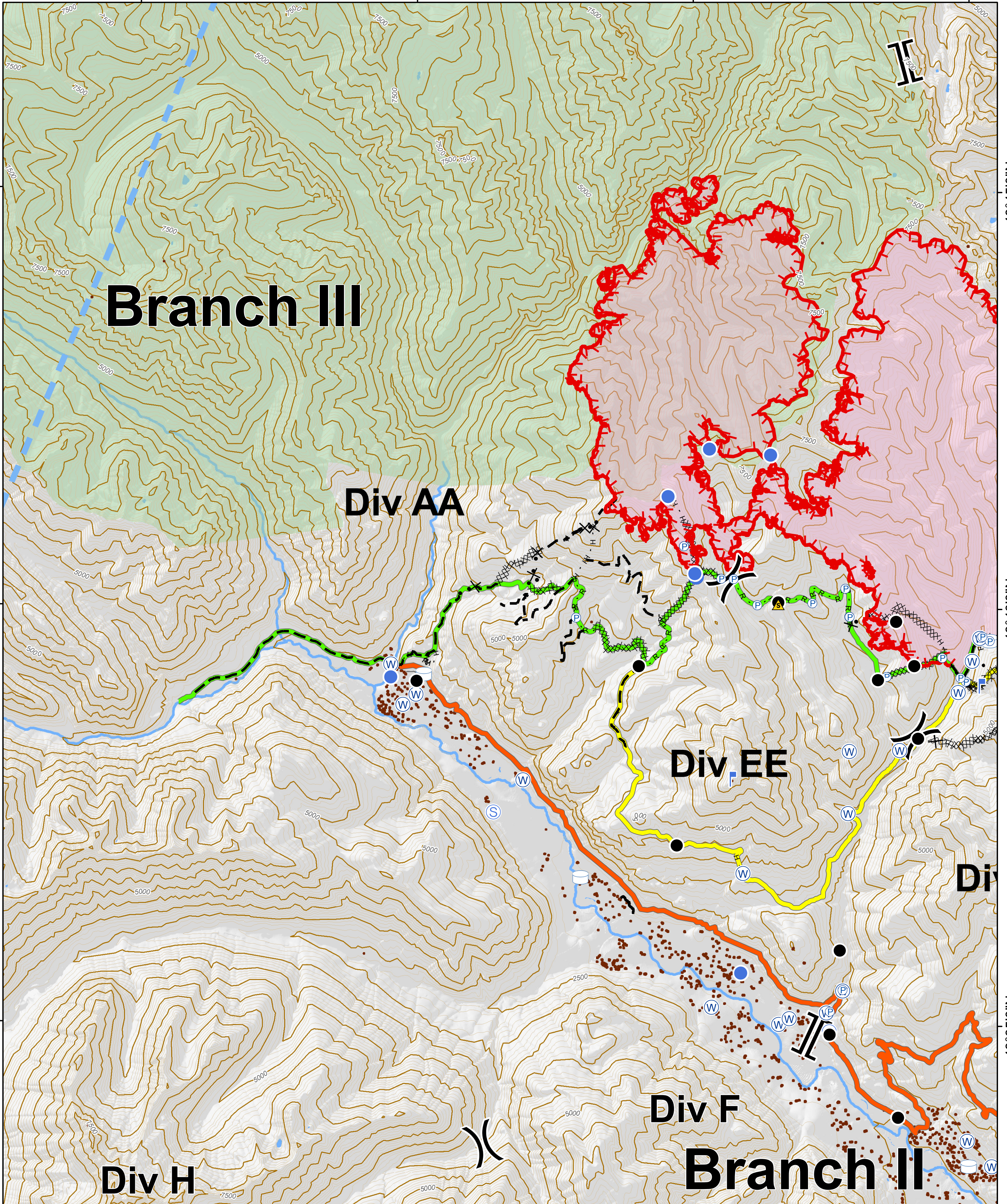
Div EE

Div

Div F

Div H

Branch II



120°35'0"W

120°30'0"W

120°25'0"W

120°20'0"W



08/28/2018
Day Shift

Map Page:
A2

Crescent Mountain Fire
WA-OWF-000422
42,942 Acres
as of 8/26 @ 1030

McLeod Fire
WA-OWF-000522
21,659 Acres
as of 8/26 @ 1100



0 0.5 1 2 Miles

120°20'0"W

120°15'0"W

120°10'0"W

120°5'0"W

48°45'0"N

48°45'0"N

48°40'0"N

48°40'0"N

48°35'0"N

48°35'0"N

120°20'0"W

120°15'0"W

120°10'0"W

120°5'0"W

Branch IV

Div LL

Div GG

