

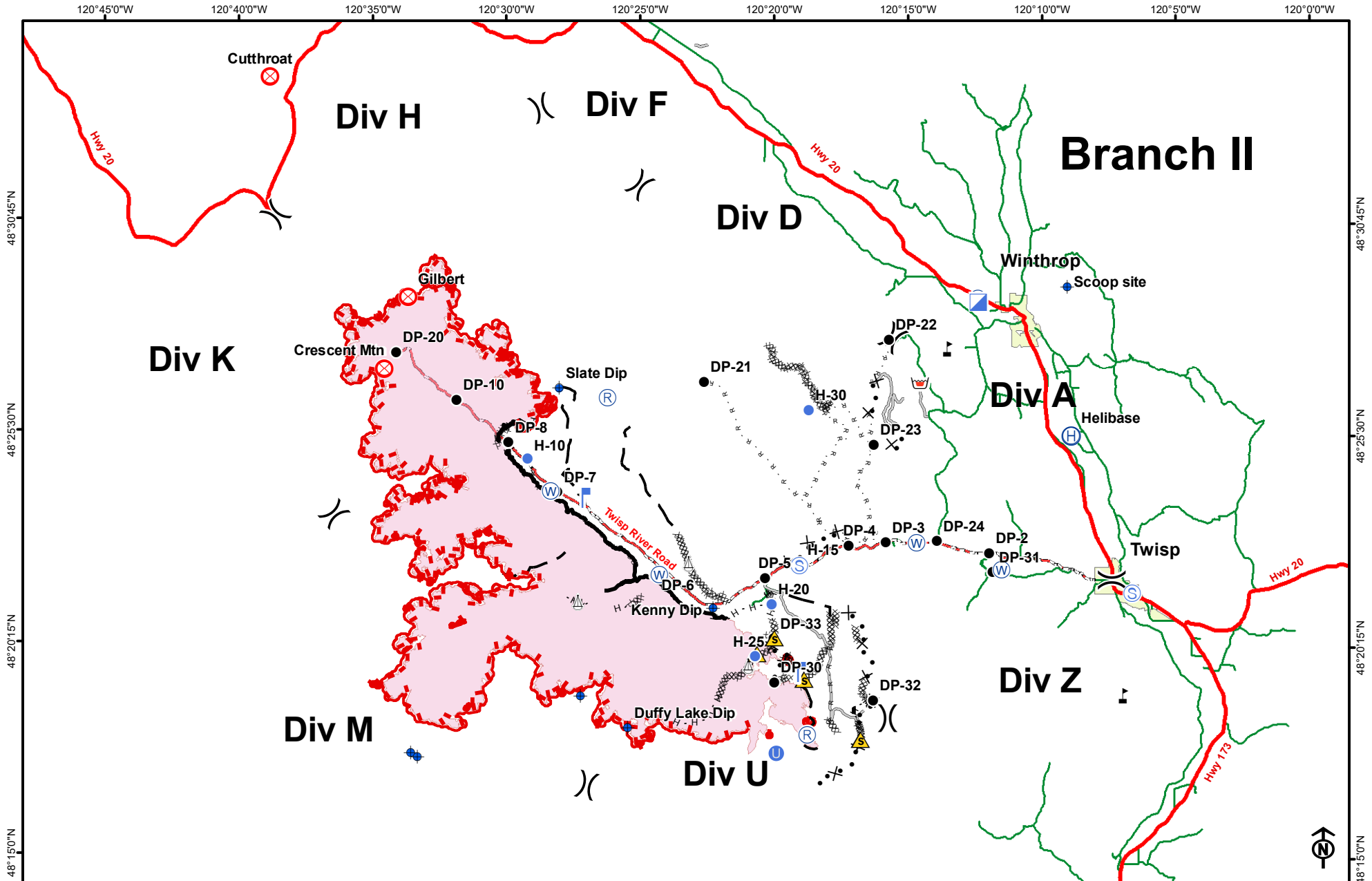


# IAP Map

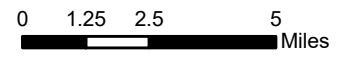
## Crescent Mountain Fire WA-OWF-000428

08/28/2018

Approx Acres: 42,942



- |                       |                         |                         |              |                             |                         |                               |                  |
|-----------------------|-------------------------|-------------------------|--------------|-----------------------------|-------------------------|-------------------------------|------------------|
| Camp                  | Helibase                | Lookout                 | Safety Zone  | Value at Risk               | Uncontrolled Fire Edge  | Proposed Dozer Line           | Twisp River Road |
| Dip Site              | Unimproved Landing Area | Repeater                | Sling Site   | Division Break              | Completed Line          | Planned Fire Line             | Highway          |
| Fire Origin           | Helispot                | Retardant/Mud Pit       | Staging Area | H - H - Completed Hand Line | Completed Dozer Line    | Aerial Retardant Drop         | County Road      |
| Incident Command Post | Water Source            | Access or Improved Road | Other        | Road as Completed Line      | Management Action Point | Wildfire Daily Fire Perimeter | Towns            |



8/27/2018 @ 1759  
 NAD 83 USFS R6 Albers (Meters)  
 SA Blue Team GIS  
 Latest Intel: 08-26-18 @ 1030