



IAP Map

McLeod Fire WA-OWF-000522

08/28/2018

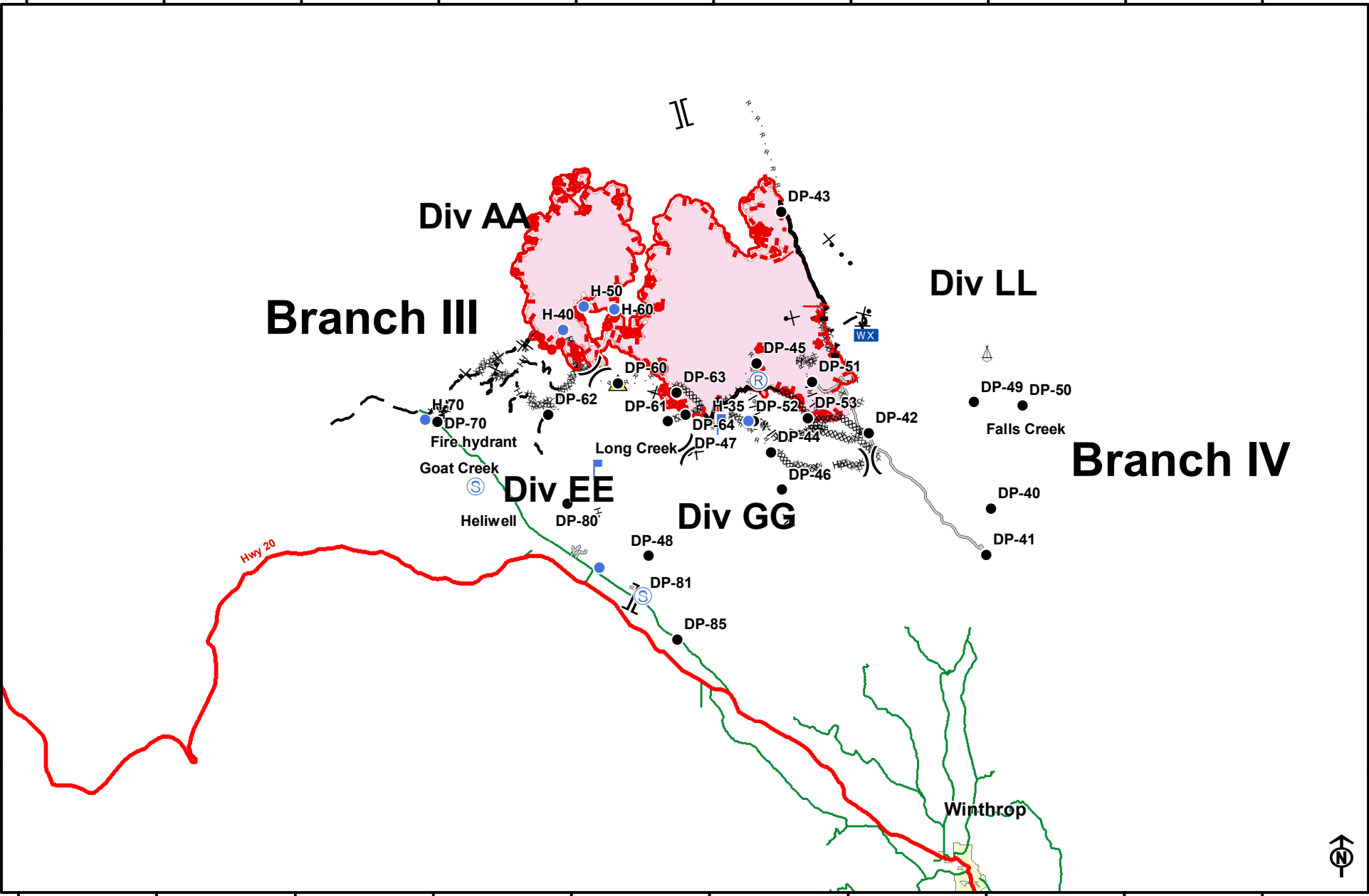
Approx Acres: 21,659



120°45'0"W 120°40'0"W 120°35'0"W 120°30'0"W 120°25'0"W 120°20'0"W 120°15'0"W 120°10'0"W 120°5'0"W 120°0'0"W

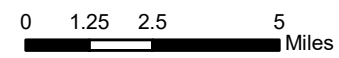
48°46'30"N
48°41'15"N
48°36'0"N
48°30'45"N

48°46'30"N
48°41'15"N
48°36'0"N
48°30'45"N



120°45'0"W 120°40'0"W 120°35'0"W 120°30'0"W 120°25'0"W 120°20'0"W 120°15'0"W 120°10'0"W 120°5'0"W 120°0'0"W

- | | | | | | | | |
|--|--|--|--|--|--|--|--|
| | | | | | | | |
| | | | | | | | |
| | | | | | | | |
| | | | | | | | |
| | | | | | | | |
| | | | | | | | |
| | | | | | | | |



8/27/2018 @ 1757
NAD 83 USFS R6 Albers (Meters)
SA Blue Team GIS
Latest Intel: 08-26-18 @ 1100