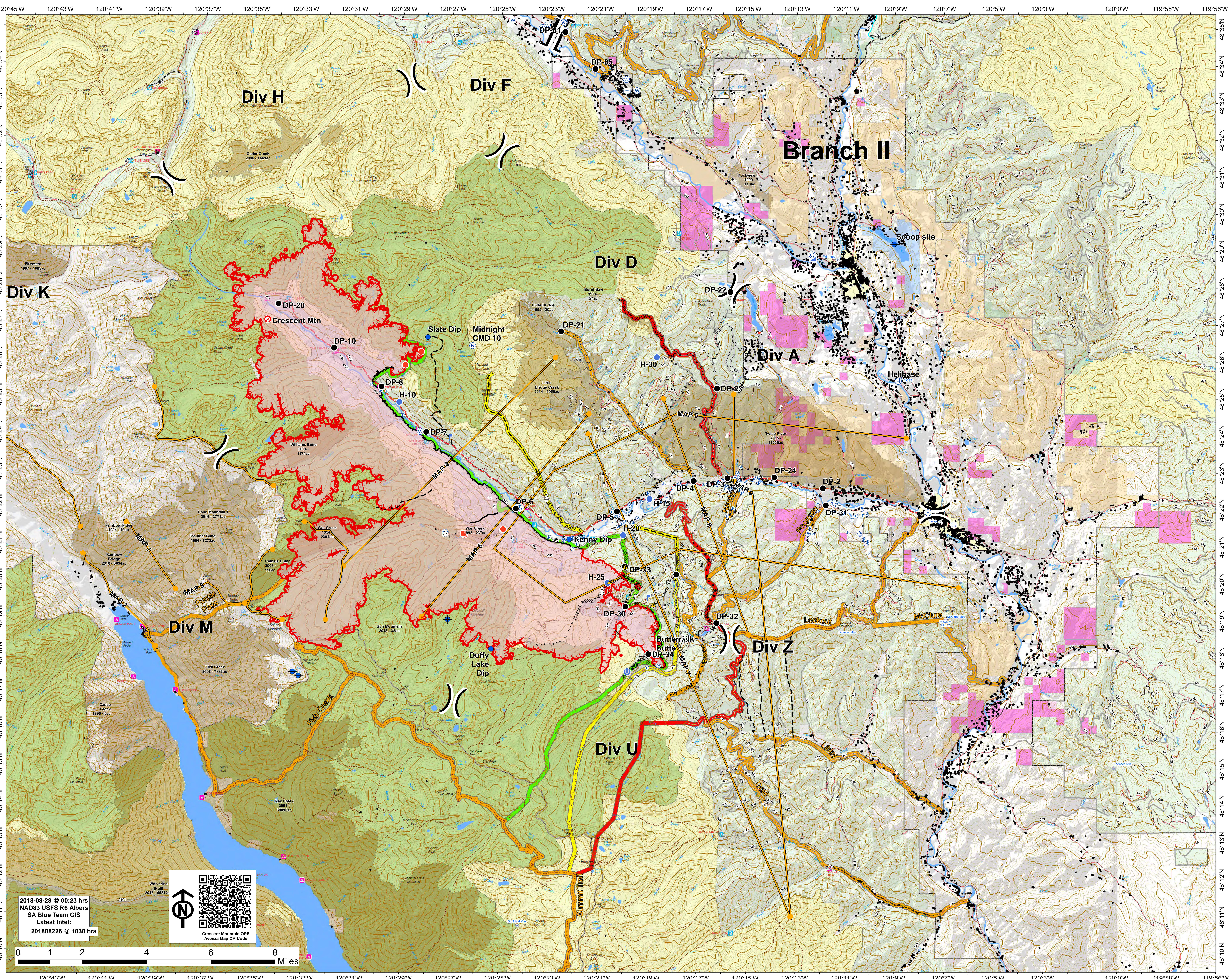




Operations
Map
Approx. Acreage:
42,942

- Camp
- ✕ Closure
- Dip Site
- Drop Point
- ⊗ Fire Origin
- ⊕ Fire Station
- ⊖ Gate
- ⊕ Helibase
- ⊕ Unimproved Landing Area
- ⊕ Helispot
- Hot Spot
- ⊕ Incident Command Post
- ⊕ Internet Access
- ⊕ Lookout
- ⊕ Pump
- ⊕ Repeater
- ⊕ Retardant/Mud Pit
- ⊕ Safety Zone
- ⊕ Sling Site
- ⊕ Staging Area
- ⊕ Water Source
- ⊕ Water Tank
- ⊕ Value at Risk
- ⊕ Division Break
- ⊕ Branch Break
- ⊕ Uncontrolled Fire Edge
- ⊕ Completed Line
- ⊕ Completed Dozer Line
- ⊕ Completed Hand Line
- ⊕ Road as Completed Line
- ⊕ Access or Improved Road
- ⊕ Proposed Dozer Line
- ⊕ Planned Fire Line
- ⊕ Aerial Retardant Drop
- ⊕ Temporary Flight Restriction
- ⊕ Management Action Point
- ⊕ Wildfire Daily Fire Perimeter
- ⊕ Structure
- ⊕ Twisp River Road
- Road
 - ⊕ Basic Custodial Care (Closed)
 - ⊕ High Clearance Vehicles
 - ⊕ Suitable for Passenger Cars
 - ⊕ Moderate Degree of User Comfort
 - ⊕ Closed/Decommissioned
 - ⊕ Trail
- ⊕ Town
 - ⊕ PACE: primary
 - ⊕ PACE: alternate
 - ⊕ PACE: contingency
 - ⊕ PACE: emergency
- ⊕ Ranger District
- ⊕ Historical Fire
- ⊕ Roadless Conservation
- ⊕ Wilderness
- Owner
 - ⊕ FS
 - ⊕ NPS
 - ⊕ PVT
 - ⊕ USFWS
 - ⊕ City or Municipality
 - ⊕ WA Dept of F&W
 - ⊕ WA State Parks
 - ⊕ Washington DNR



2018-08-28 @ 00:23 hrs
NAD83 USFS R6 Albers
SA Blue Team GIS
Latest Intel:
201808226 @ 1030 hrs



Crescent Mountain OPS
Avenza Map QR Code