



Fire Progression Map

McLeod Fire

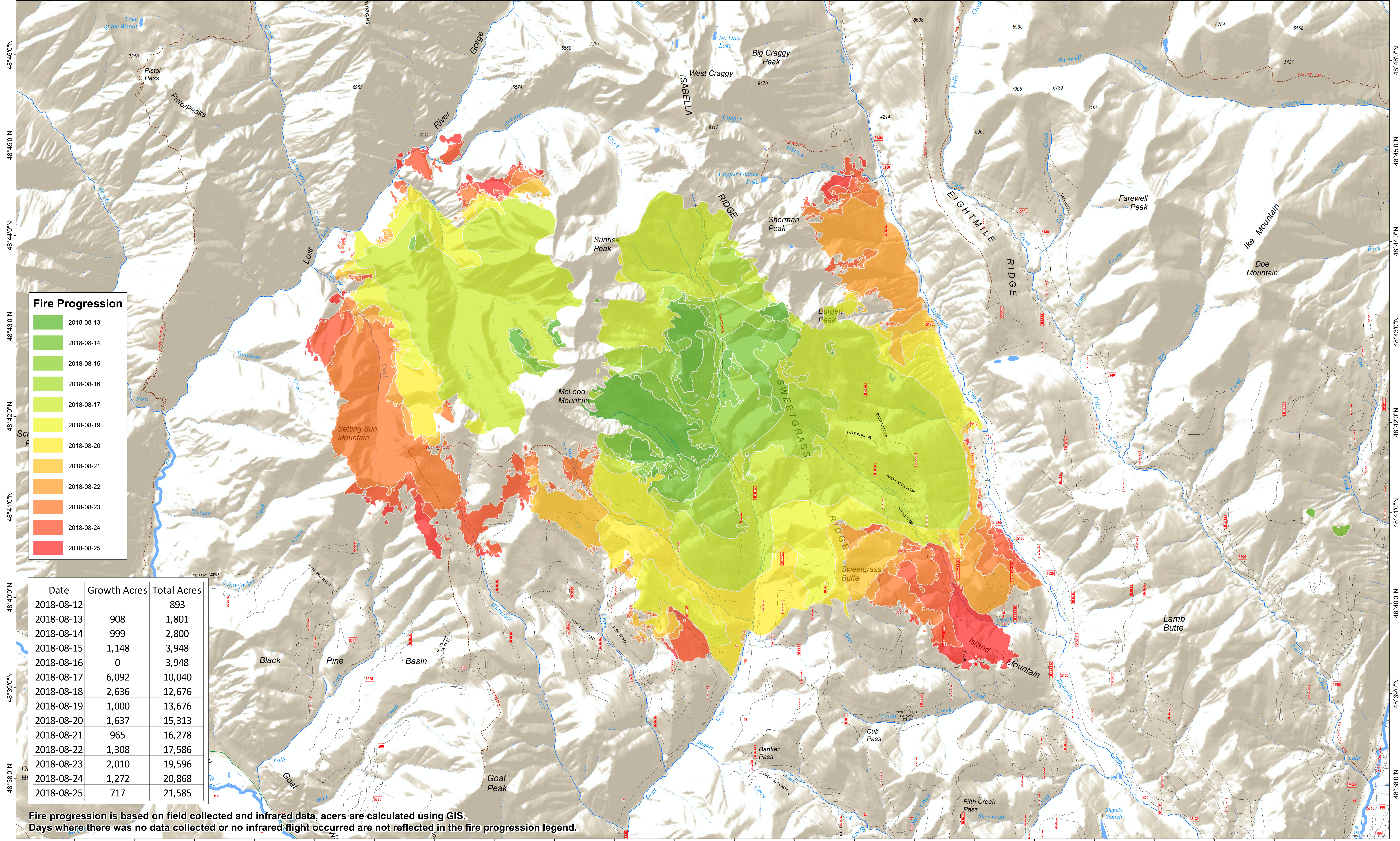
WA-OWF-000522

Approximate Acreage: 21,659

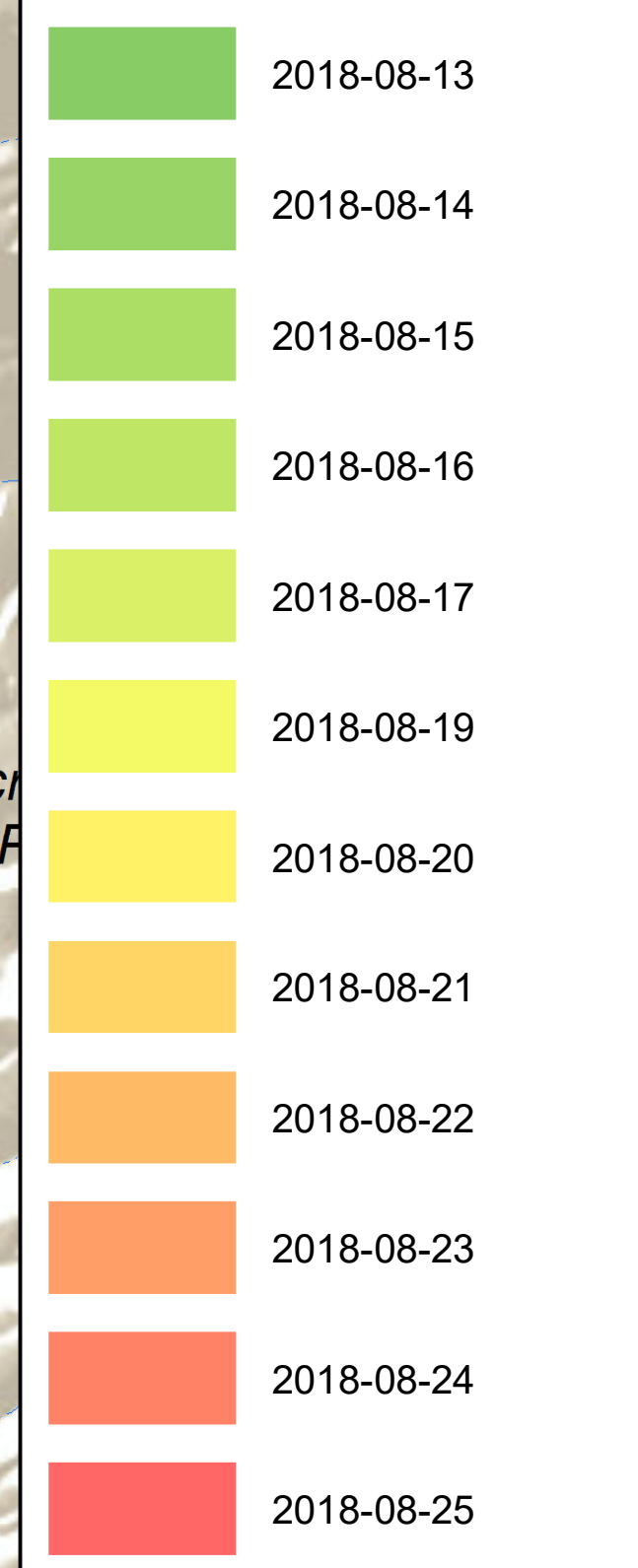
08/28/2018



120°32'0"W 120°31'0"W 120°30'0"W 120°29'0"W 120°28'0"W 120°27'0"W 120°26'0"W 120°25'0"W 120°24'0"W 120°23'0"W 120°22'0"W 120°21'0"W 120°20'0"W 120°19'0"W 120°18'0"W 120°17'0"W 120°16'0"W 120°15'0"W 120°14'0"W 120°13'0"W 120°12'0"W 120°11'0"W 120°10'0"W



Fire Progression



Date	Growth Acres	Total Acres
2018-08-12	893	893
2018-08-13	908	1,801
2018-08-14	999	2,800
2018-08-15	1,148	3,948
2018-08-16	0	3,948
2018-08-17	6,092	10,040
2018-08-18	2,636	12,676
2018-08-19	1,000	13,676
2018-08-20	1,637	15,313
2018-08-21	965	16,278
2018-08-22	1,308	17,586
2018-08-23	2,010	19,596
2018-08-24	1,272	20,868
2018-08-25	717	21,585

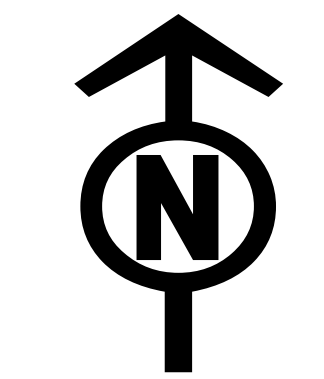
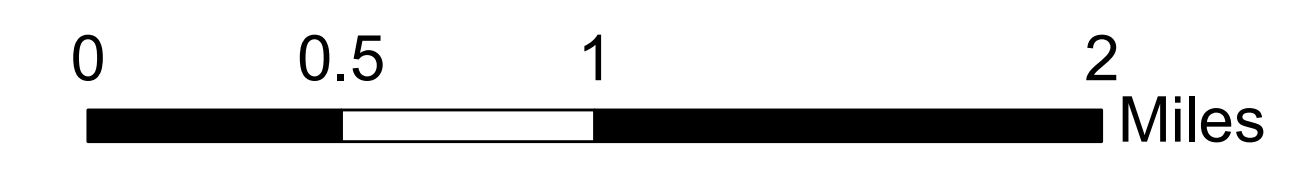
Fire progression is based on field collected and infrared data, acres are calculated using GIS. Days where there was no data collected or no infrared flight occurred are not reflected in the fire progression legend.

120°31'0"W 120°30'0"W 120°29'0"W 120°28'0"W 120°27'0"W 120°26'0"W 120°25'0"W 120°24'0"W 120°23'0"W 120°22'0"W 120°21'0"W 120°20'0"W 120°19'0"W 120°18'0"W 120°17'0"W 120°16'0"W 120°15'0"W 120°14'0"W 120°13'0"W 120°12'0"W 120°11'0"W 120°10'0"W

- Twisp River Road
- City Road
- Trail
- Ranger District
- Highway
- USFS road
- Towns
- County Road
- Railroad



Daily Map Products



8/28/2018 @ 00:54 hrs
NAD 83 USFS R6 Albers (Meters)
SA Blue Team GIS
Latest Intel: 20180826 @ 1100