

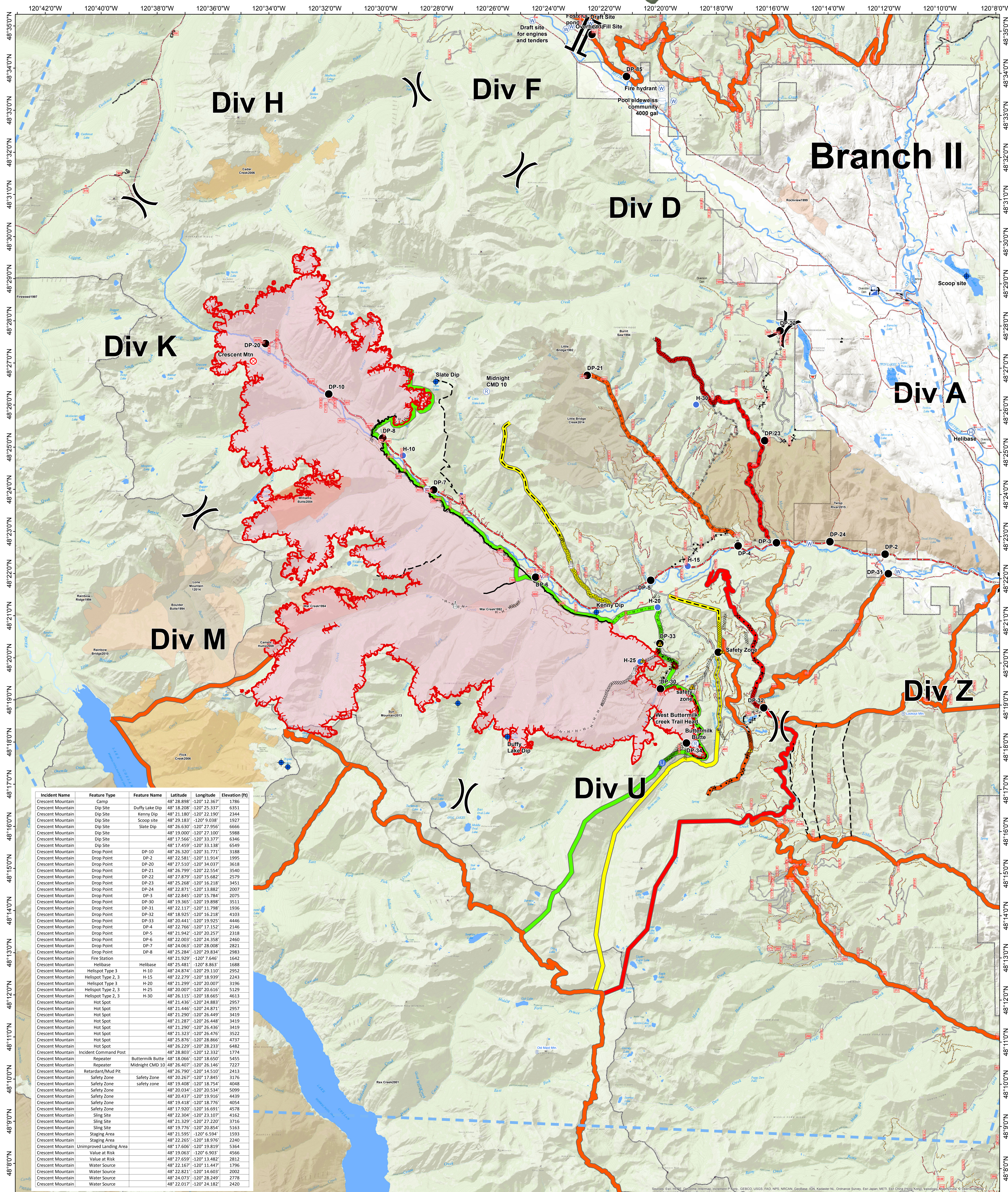
Safety Ops Map

08/28/2018

Crescent Mountain Fire

WA-OWF-000428

Approximate Acreage: 42,942



Incident Name	Feature Type	Feature Name	Latitude	Longitude	Elevation (ft)
Crescent Mountain	Camp		48° 28.898'	-120° 12.367'	1786
Crescent Mountain	Dip Site	Duffy Lake Dip	48° 18.208'	-120° 25.337'	6351
Crescent Mountain	Dip Site	Kenny Dip	48° 21.180'	-120° 22.190'	2344
Crescent Mountain	Dip Site	Scoop site	48° 29.183'	-120° 9.038'	1927
Crescent Mountain	Dip Site	Slate Dip	48° 26.630'	-120° 25.956'	6666
Crescent Mountain	Dip Site		48° 19.000'	-120° 27.100'	5988
Crescent Mountain	Dip Site		48° 17.566'	-120° 33.377'	6346
Crescent Mountain	Dip Site		48° 17.459'	-120° 33.138'	6549
Crescent Mountain	Drop Point	DP-10	48° 26.320'	-120° 31.771'	3188
Crescent Mountain	Drop Point	DP-2	48° 22.581'	-120° 11.924'	1995
Crescent Mountain	Drop Point	DP-20	48° 27.510'	-120° 34.037'	3618
Crescent Mountain	Drop Point	DP-21	48° 26.799'	-120° 22.554'	3540
Crescent Mountain	Drop Point	DP-22	48° 27.879'	-120° 15.682'	2579
Crescent Mountain	Drop Point	DP-23	48° 25.268'	-120° 16.218'	3451
Crescent Mountain	Drop Point	DP-24	48° 22.871'	-120° 13.882'	2007
Crescent Mountain	Drop Point	DP-3	48° 22.845'	-120° 15.784'	2075
Crescent Mountain	Drop Point	DP-30	48° 19.365'	-120° 19.898'	3511
Crescent Mountain	Drop Point	DP-31	48° 22.117'	-120° 11.798'	1936
Crescent Mountain	Drop Point	DP-32	48° 18.925'	-120° 16.218'	4103
Crescent Mountain	Drop Point	DP-33	48° 20.441'	-120° 19.925'	4446
Crescent Mountain	Drop Point	DP-4	48° 22.765'	-120° 17.152'	2146
Crescent Mountain	Drop Point	DP-5	48° 21.942'	-120° 20.257'	2318
Crescent Mountain	Drop Point	DP-6	48° 22.003'	-120° 24.358'	2460
Crescent Mountain	Drop Point	DP-7	48° 24.063'	-120° 28.008'	2821
Crescent Mountain	Drop Point	DP-8	48° 25.284'	-120° 29.834'	2983
Crescent Mountain	Fire Station		48° 21.929'	-120° 7.646'	1642
Crescent Mountain	Helibase		48° 25.481'	-120° 8.863'	1688
Crescent Mountain	Helispot Type 3	H-10	48° 24.874'	-120° 29.110'	2952
Crescent Mountain	Helispot Type 2, 3	H-15	48° 22.279'	-120° 18.939'	2243
Crescent Mountain	Helispot Type 3	H-20	48° 21.299'	-120° 20.007'	3196
Crescent Mountain	Helispot Type 2, 3	H-25	48° 20.007'	-120° 20.616'	5129
Crescent Mountain	Helispot Type 2, 3	H-30	48° 20.113'	-120° 19.916'	4613
Crescent Mountain	Hot Spot		48° 21.436'	-120° 24.883'	2957
Crescent Mountain	Hot Spot		48° 21.446'	-120° 24.871'	2957
Crescent Mountain	Hot Spot		48° 21.290'	-120° 26.449'	3419
Crescent Mountain	Hot Spot		48° 21.287'	-120° 26.448'	3419
Crescent Mountain	Hot Spot		48° 21.290'	-120° 26.436'	3419
Crescent Mountain	Hot Spot		48° 21.323'	-120° 26.476'	3522
Crescent Mountain	Hot Spot		48° 25.876'	-120° 28.866'	4737
Crescent Mountain	Hot Spot		48° 26.229'	-120° 28.233'	6482
Crescent Mountain	Incident Command Post		48° 28.803'	-120° 12.332'	1774
Crescent Mountain	Repeater	Buttermilk Butte	48° 18.066'	-120° 18.650'	5455
Crescent Mountain	Repeater	Midnight CMD 10	48° 26.407'	-120° 26.144'	7227
Crescent Mountain	Retardant/Mud Pit		48° 26.790'	-120° 14.510'	2413
Crescent Mountain	Safety Zone	safety zone	48° 20.267'	-120° 17.845'	3176
Crescent Mountain	Safety Zone	safety zone	48° 19.408'	-120° 18.754'	4048
Crescent Mountain	Safety Zone		48° 20.034'	-120° 20.534'	5099
Crescent Mountain	Safety Zone		48° 20.437'	-120° 19.916'	4439
Crescent Mountain	Safety Zone		48° 19.418'	-120° 18.776'	4054
Crescent Mountain	Safety Zone		48° 17.920'	-120° 16.691'	4578
Crescent Mountain	Sling Site		48° 22.304'	-120° 23.107'	4162
Crescent Mountain	Sling Site		48° 21.329'	-120° 27.220'	3716
Crescent Mountain	Sling Site		48° 19.776'	-120° 20.854'	5163
Crescent Mountain	Staging Area		48° 21.595'	-120° 6.594'	1593
Crescent Mountain	Staging Area		48° 22.265'	-120° 18.976'	2240
Crescent Mountain	Unimproved Landing Area		48° 17.606'	-120° 19.819'	5364
Crescent Mountain	Value at Risk		48° 19.063'	-120° 6.903'	4566
Crescent Mountain	Value at Risk		48° 27.659'	-120° 13.482'	2812
Crescent Mountain	Water Source		48° 22.167'	-120° 11.447'	1796
Crescent Mountain	Water Source		48° 22.821'	-120° 14.603'	2002
Crescent Mountain	Water Source		48° 24.073'	-120° 28.249'	2778
Crescent Mountain	Water Source		48° 22.017'	-120° 24.182'	2420

Legend

- C Camp
- X Closure
- + Dip Site
- Drop Point
- X Fire Origin
- Gate
- H Helibase
- U Unimproved Landing Area
- + Helispot
- + Incident Command Post
- + Lookout
- + Repeater
- M Retardant/Mud Pit
- Safety Zone
- + Staging Area
- + Water Source
- + Water Tank
- + Value at Risk
- - - Division Break
- - - Branch Break
- Completed Dozer Line
- Planned Fire Line
- Aerial Retardant Drop
- Temporary Flight Restriction
- Other
- Access or Improved Road

Contingency Lines

- primary
- alternate
- contingency
- emergency

Fire History

- 1992 - 1999
- 2004
- 2006
- 2008
- 2013
- 2014
- 2015

Roads_OKW

- 1 - BASIC CUSTODIAL CARE (CLOSED)
- 2 - HIGH CLEARANCE VEHICLES
- 3 - SUITABLE FOR PASSENGER CARS
- 4 - MODERATE DEGREE OF USER COMFORT
- CLOSED/DECOMM
- Ranger/District_Clip

All Products QR Code

2018-08-27 @ 2327
NAD 83 USFS R6 Albers (Meters)
SA Blue Team GIS
Latest Intel: 201808226 @ 1030 hrs