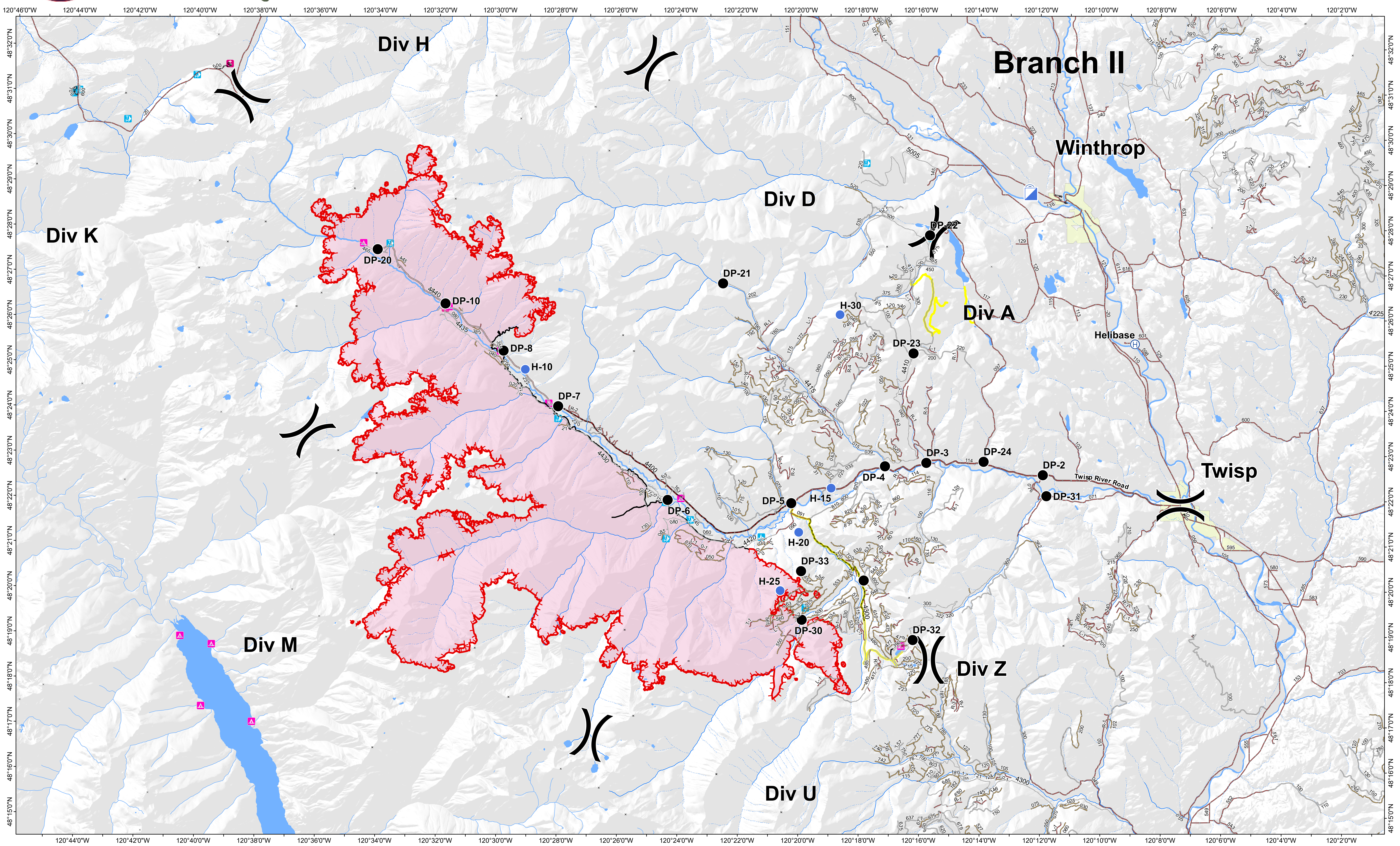




# Transportation Map

# Crescent Mountain Fire WA-OWF-000428

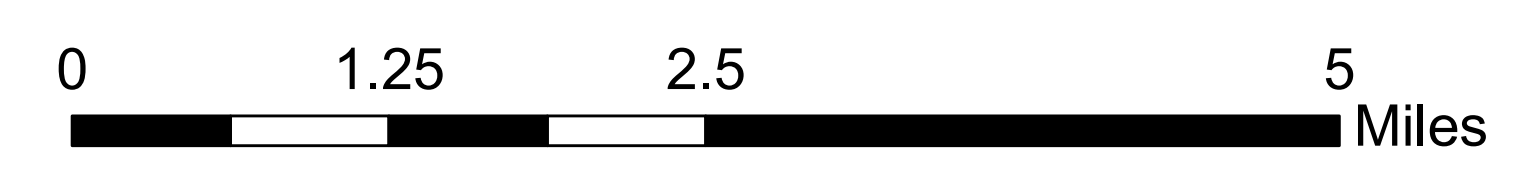
08/28/2018



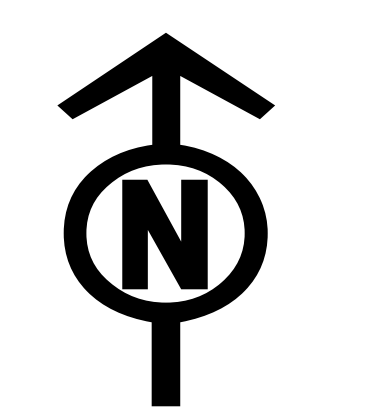
Y:\2018\_Crescent\_Mountain\project\trans\_arch\_e\_land\_2018\_Crescent\_Mountain\_WAOWF428.mxd m.schindler

- Division Break
- Camp
- Helispot
- Incident Command Post
- Campground
- Horse Camp
- Info Site/Fee Station
- Picnic Site
- Snowpark
- Trailhead
- Drop Point
- Helibase

- 1 - BASIC CUSTODIAL CARE (CLOSED)
- 2 - HIGH CLEARANCE VEHICLES
- 3 - SUITABLE FOR PASSENGER CARS
- 4 - MODERATE DEGREE OF USER COMFORT
- CLOSED/DECOMM
- Uncontrolled Fire Edge
- Access or Improved Road
- Completed Line
- Twisp River Road
- Other stream
- Perennial
- Intermittent
- Waterbody
- Wildfire Daily Fire Perimeter
- Towns



Approx Acreage: 42,942



08/24/2018 @ 2056  
AD 83 USFS R6 Albers (Meters)  
SA Blue Team  
Latest Intel: 20180826 @ 1030