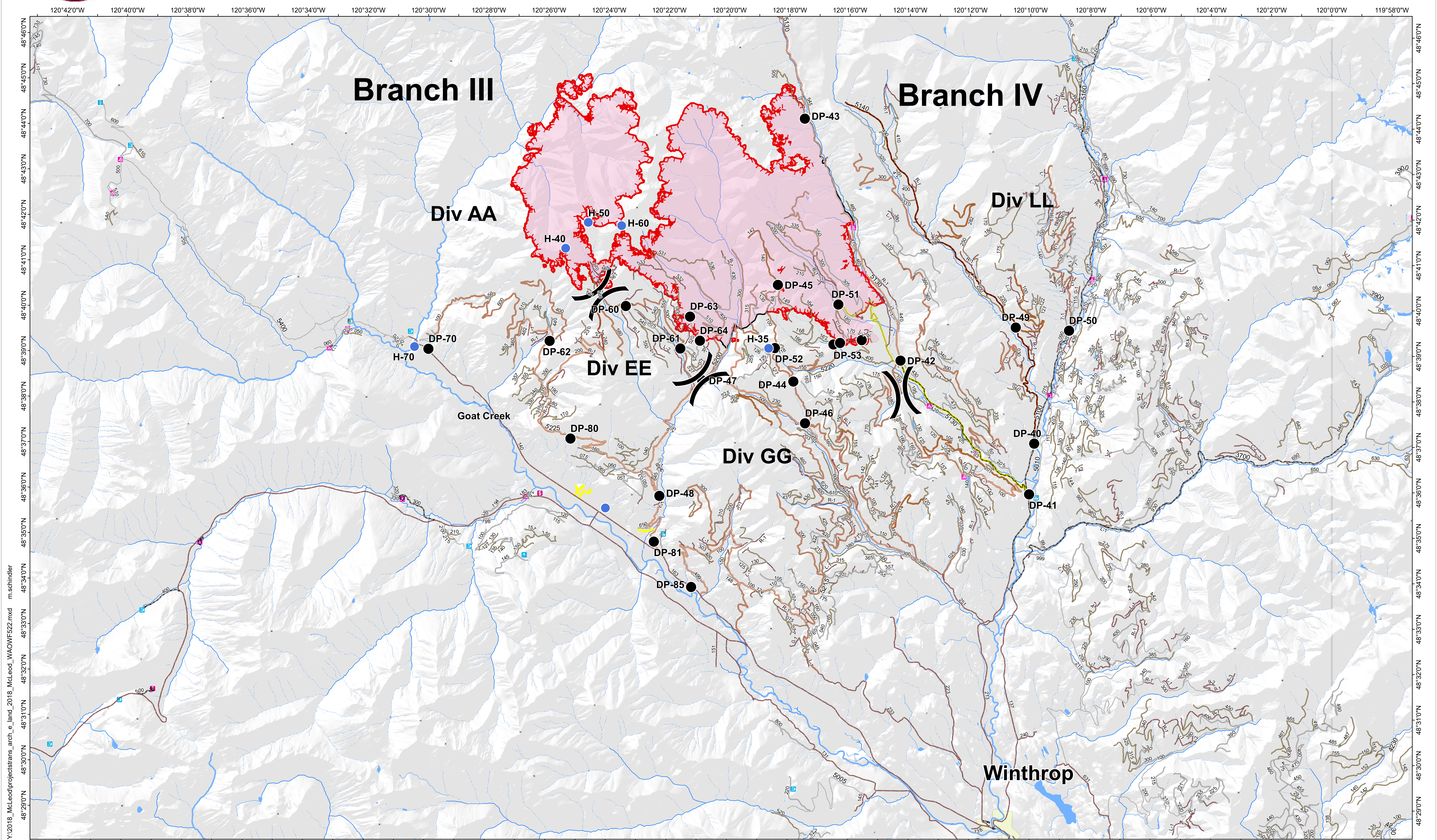




Transportation Map

McLeod Fire WA-OWF-000428

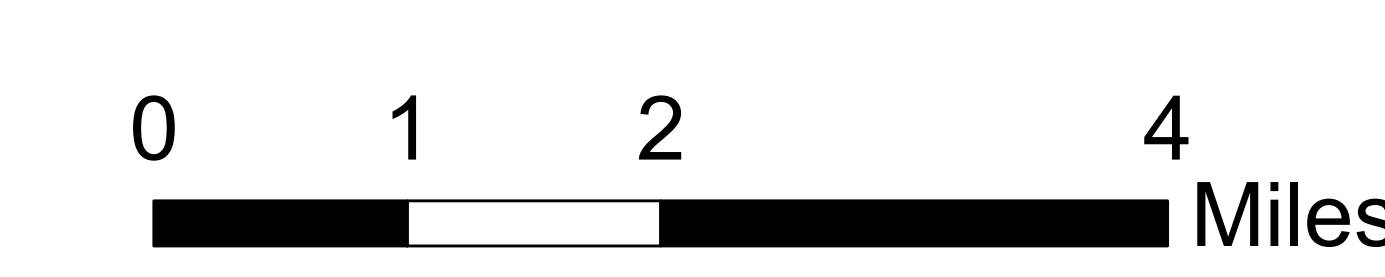
8/28/2018



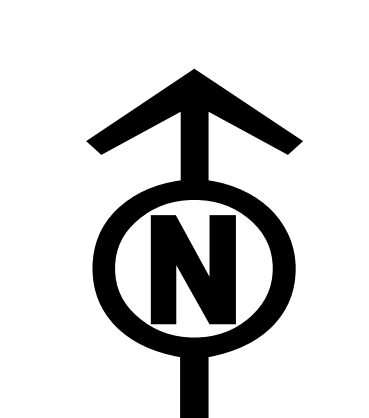
Y:\2018_McLeod\project\trans_arch_e_land_2018_McLeod_WAOWF522.mxd m.schindler



- Drop Point
- Campground
- Ski Area
- 1 - BASIC CUSTODIAL CARE (CLOSED)
- Uncontrolled Fire Edge
- Helispot
- Info Site/Fee Station
- Snowpark
- 2 - HIGH CLEARANCE VEHICLES
- Wildfire Daily Fire Perimeter
- Lookout/Cabin
- Trailhead
- 3 - SUITABLE FOR PASSENGER CARS
- Access or Improved Road
- Towns
- Recreation Residence
- 4 - MODERATE DEGREE OF USER COMFORT
- Completed Line
- CLOSED/DECOMM



Approx Acreage: 21,659



8/27/2018 @ 22:13
NAD 83 USFS R6 Albers (Meters)
SA Blue Team GIS
Latest Intel: 20180826 @ 1100