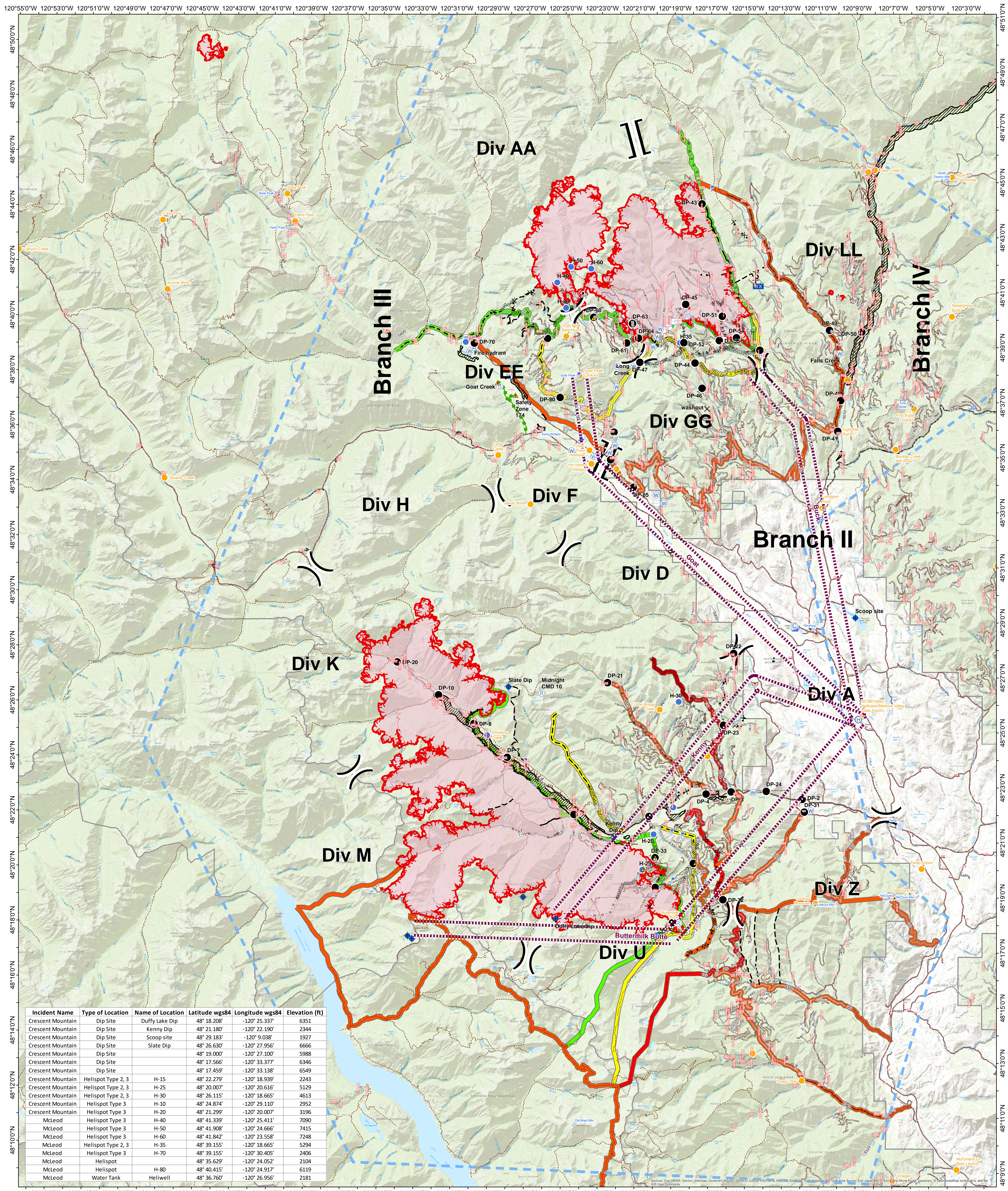


Air Ops Briefing Map

Crescent Mountain Fire
WA-OWF-000428
Acreage: 43,484

McLeod Fire
WA-OWF-000522
Acreage: 21,915



Incident Name	Type of Location	Name of Location	Latitude wgs84	Longitude wgs84	Elevation (ft)
Crescent Mountain	Dip Site	Duffy Lake Dip	48° 18.208'	-120° 25.337'	6351
Crescent Mountain	Dip Site	Kenny Dip	48° 21.180'	-120° 22.190'	2344
Crescent Mountain	Dip Site	Scoop site	48° 29.183'	-120° 9.038'	1927
Crescent Mountain	Dip Site	Slate Dip	48° 26.630'	-120° 27.956'	6666
Crescent Mountain	Dip Site		48° 19.000'	-120° 27.100'	5988
Crescent Mountain	Dip Site		48° 17.566'	-120° 33.377'	6346
Crescent Mountain	Dip Site		48° 17.459'	-120° 33.338'	6549
Crescent Mountain	Helispot Type 2, 3	H-15	48° 22.279'	-120° 18.939'	2243
Crescent Mountain	Helispot Type 2, 3	H-25	48° 20.007'	-120° 20.616'	5129
Crescent Mountain	Helispot Type 2, 3	H-30	48° 26.115'	-120° 18.665'	4613
Crescent Mountain	Helispot Type 3	H-10	48° 24.874'	-120° 29.110'	2952
Crescent Mountain	Helispot Type 3	H-20	48° 21.299'	-120° 20.007'	3196
McLeod	Helispot Type 3	H-40	48° 41.339'	-120° 25.411'	7090
McLeod	Helispot Type 3	H-50	48° 41.908'	-120° 24.666'	7415
McLeod	Helispot Type 3	H-60	48° 41.842'	-120° 23.558'	7248
McLeod	Helispot Type 2, 3	H-35	48° 39.155'	-120° 18.665'	5294
McLeod	Helispot Type 3	H-70	48° 39.155'	-120° 30.405'	2406
McLeod	Helispot	H-80	48° 35.629'	-120° 24.052'	2104
McLeod	Helispot	H-80	48° 40.415'	-120° 24.917'	6119
McLeod	Water Tank	Heliwell	48° 36.760'	-120° 26.956'	2181

Flight Routes

- Flight Routes
- Radio Tower
- Camp
- Closure
- Dip Site

Drop Point

- Drop Point
- Helibase
- Unimproved Landing Area
- Helispot
- Incident Command Post

Lookout

- Lookout
- Mobile Weather Unit
- Repeater
- Retardant/Mud Pit
- Safety Zone
- Sling Site

Staging Area

- Staging Area
- Water Source
- Water Tank
- Value at Risk

Division Break

- Division Break
- Branch Break
- Completed Hand Line
- Proposed Dozer Line

Road

- Road as Completed Line
- Access or Improved Road
- Temporary Flight Restriction
- Escape Route
- Wildfire Daily Fire Perimeter
- Retardant Avoidance Areas

Planned Fire Line

- Planned Fire Line
- Aerial Retardant Drop
- Temporary Flight Restriction
- Escape Route
- Wildfire Daily Fire Perimeter
- Retardant Avoidance Areas

Road

- 1 - BASIC CUSTODIAL CARE (CLOSED)
- 2 - HIGH CLEARANCE VEHICLES
- 3 - SUITABLE FOR PASSENGER CARS
- 4 - MODERATE DEGREE OF USER COMFORT
- CLOSED/DECOMM
- Twop River Road
- Trail, Clip

Contingency Lines

- primary
- alternate
- contingency
- emergency

All Products QR Code

North Arrow

Scale

0 0.75 1.5 3 4.5 6 Miles

8/28/2018 @ 2225
NAD 83 USFS R6 Albers (Meters)
SA Blue Team GIS
Latest Intel: 20180828 @ 0004 hrs
08/29/2018