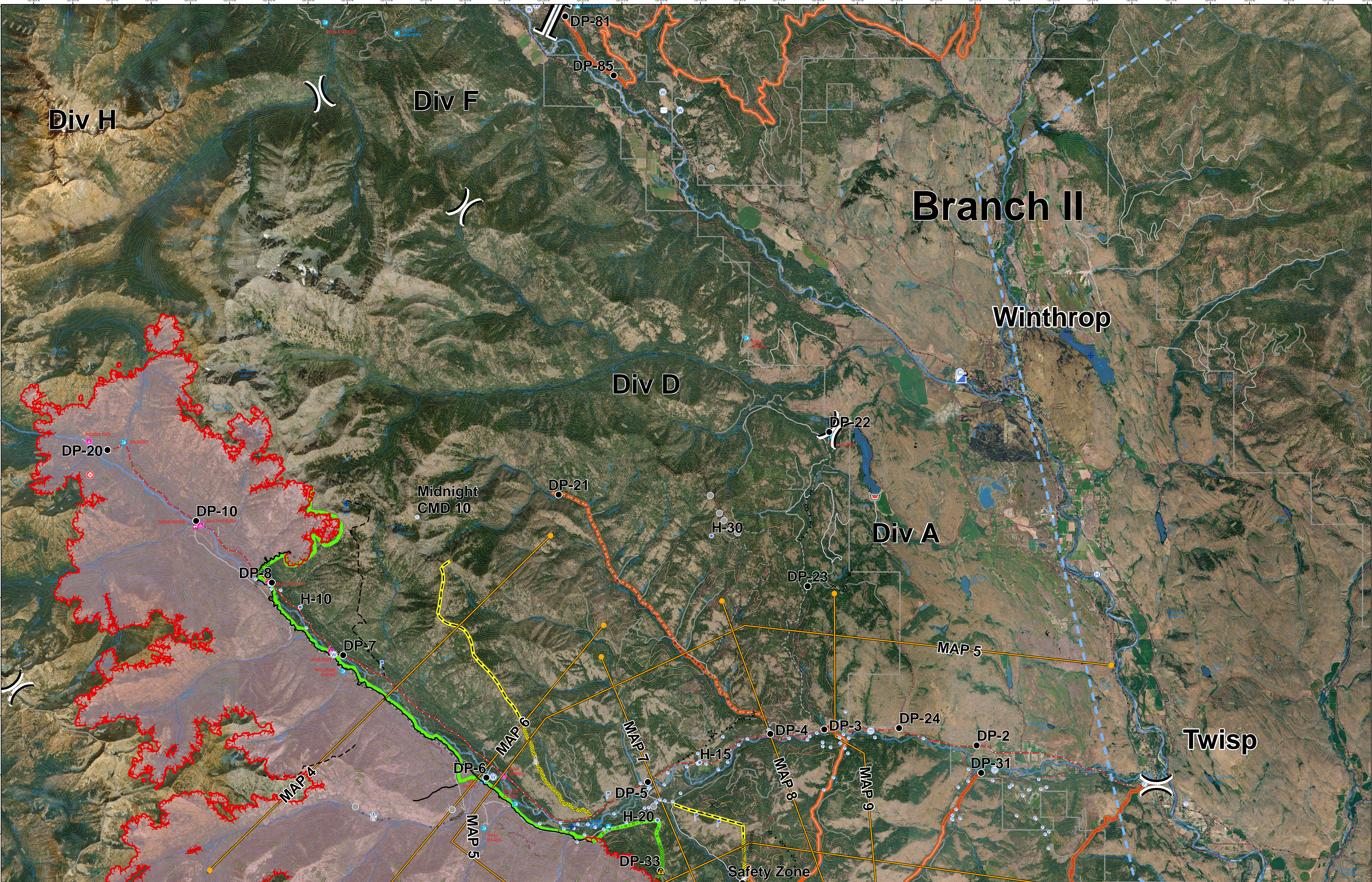




# Div A/D/F Map

# Crescent Mountain Fire WA-OWF-000428

08/29/2018

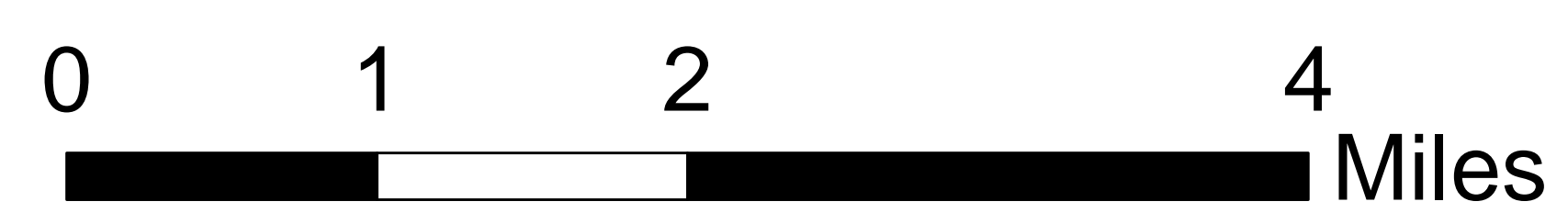


- Safety Zone
- Camp
- Closure
- Dip Site
- Drop Point
- Fire Origin
- Fire Station
- Gate
- Helibase
- Helispot
- Incident Command Post
- Internet Access
- Lookout
- Pump
- Repeater
- Retardant/Mud Pit
- Sling Site
- Staging Area
- Water Source
- Water Tank
- Value at Risk
- Other
- Division Break

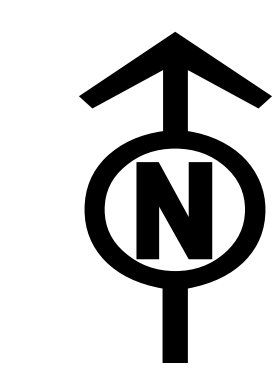
- Uncontrolled Fire Edge
- Completed Line
- Completed Dozer Line
- Completed Hand Line
- Road as Completed Line
- Access or Improved Road
- Proposed Dozer Line
- Planned Fire Line
- Aerial Retardant Drop
- Temporary Flight Restriction
- Management Action Point
- Other

- Twisp River Road
- Roads\_OKW
- 1 - BASIC CUSTODIAL CARE (CLOSED)
- 2 - HIGH CLEARANCE VEHICLES
- 3 - SUITABLE FOR PASSENGER CARS
- 4 - MODERATE DEGREE OF USER COMFORT
- CLOSED/DECOMM

- Contingency Lines primary
- Contingency Lines alternate
- Contingency Lines contingency
- Ranger District



Approx Acreage: 42,942



8/29/2018 @ 01:08  
NAD 83 USFS R6 Albers (Meters)  
SA Blue Team GIS  
Latest Intel: 20180828 @ 0004