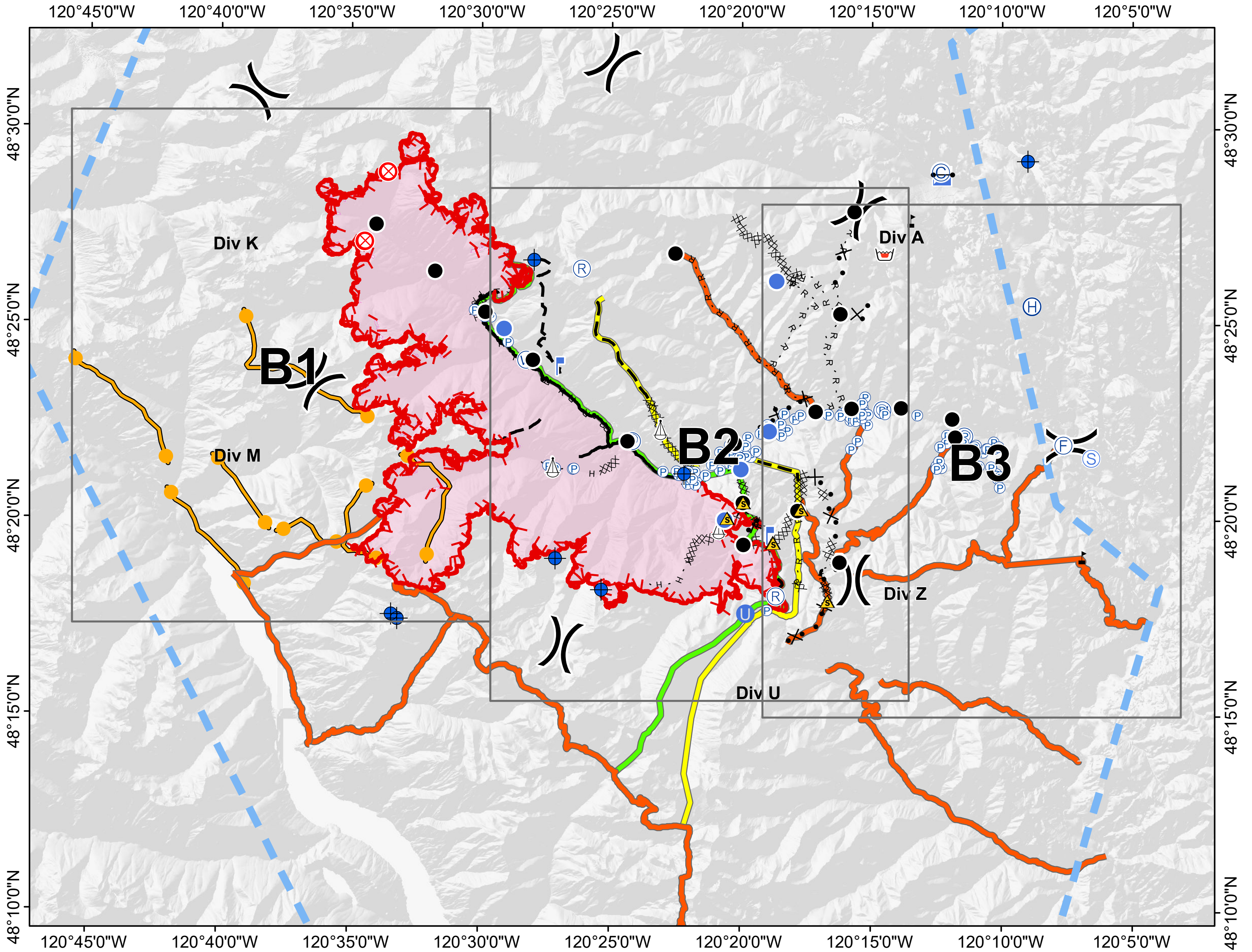




# GRID INDEX Crescent Mountain



	Aerial Hazard		Hot Spot		Water Source		Completed Line		Fire Break Planned or Incomplete		Escape Route
	Aerial Ignition		Incident Base		Water Tank		Completed Dozer Line		Planned Fire Line		Highlighted Manmade Feature
	Airstrip or Airport		Incident Command Post		Restricted Water Source		Completed Hand Line		Aerial Hazard		Ridge/Geographic Feature
	Camp		Possible IR Heat Source		Wind Speed & Direction		Road as Completed Line		Aerial Retardant Drop		Fire Spread Prediction
	Closure		IR Isolated Heat Source		Value at Risk		Access or Improved Road		Aerial Water Drop		Management Action Point
	Dip Site		Internet Access		Unknown		Line Break Completed		Air Tanker Foam		Edge of Imagery
	Drop Point		Landmark		Zone Break		Completed Plow Line		Air Tanker Retardant		Other
	Fire Location		Lookout		Division Break		Explosive Line		Helitanker Foam		Unknown
	Fire Origin		Mobile Weather Unit		Branch Break		Proposed Burnout		Helitanker Water		primary
	Fire Station		Pump		Uncontrolled Fire Edge		Active Burnout		Temporary Flight Restriction		alternate
	First Aid Station		Repeater				Completed Burnout				contingency
	Gate		Retardant/Mud Pit				Proposed Dozer Line				Structure
	Helibase		Safety Zone								1 - Basic Custodial Care (Closed)
	Unimproved Landing Area		Sling Site								2 - High Clearance Vehicles
	Helispot		Spot Fire								3 - Suitable for Passenger Cars
			Staging Area								4 - Moderate Degree of User Comfort
											5 - High Degree of User Comfort
											CLOSED/DECOMM

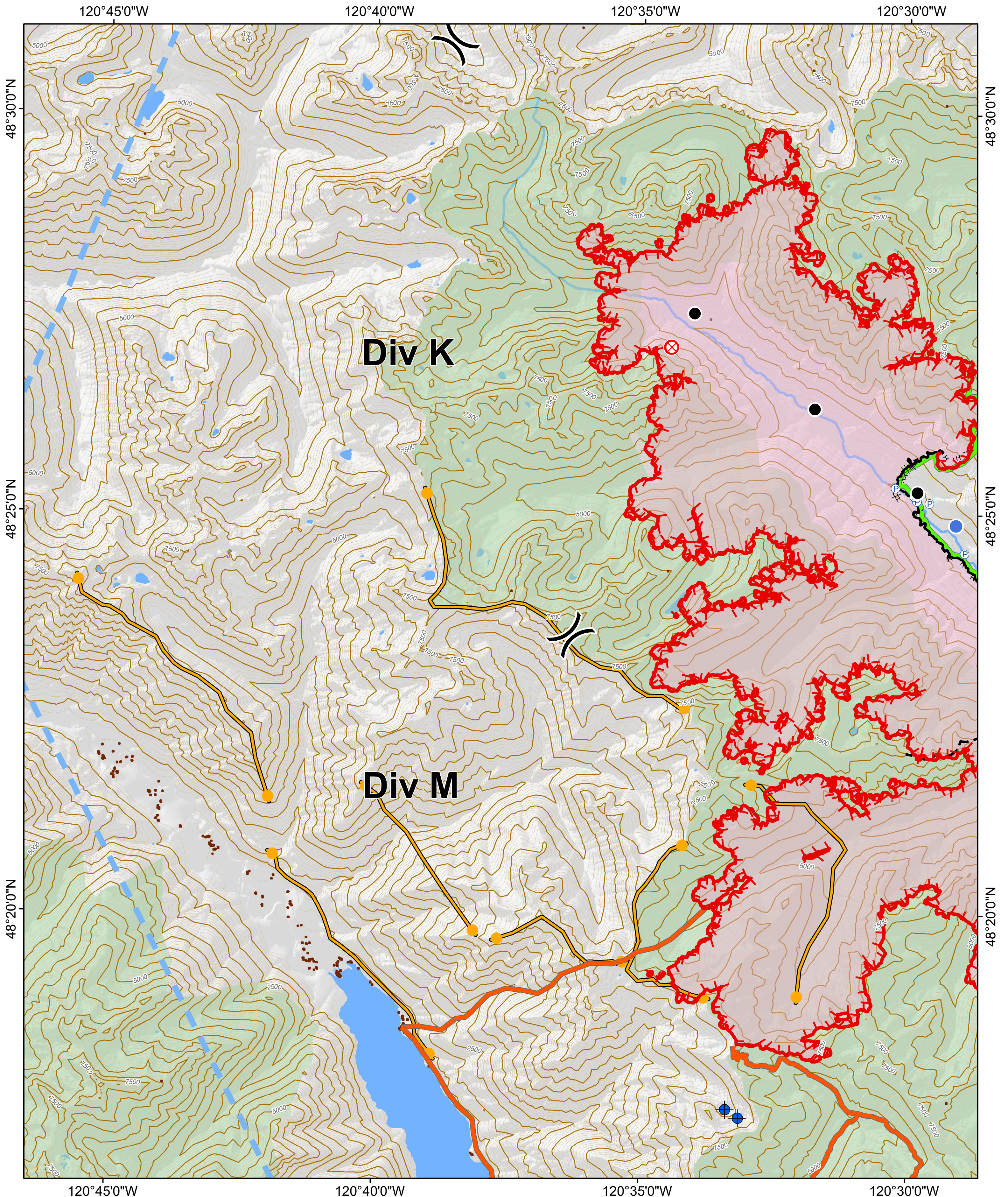




08/29/2018  
 Day Shift  
**Map Page:**  
**B1**

Crescent Mountain Fire  
 WA-OWF-000422  
 43,484 Acres  
 as of 8/28 @ 0004

McLeod Fire  
 WA-OWF-000522  
 21,915 Acres  
 as of 8/28 @ 0053



**Div K**

**Div M**

120°45'0"W

120°40'0"W

120°35'0"W

120°30'0"W

48°30'0"N

48°30'0"N

48°25'0"N

48°25'0"N

48°20'0"N

48°20'0"N

120°45'0"W

120°40'0"W

120°35'0"W

120°30'0"W





08/29/2018  
Day Shift  
**Map Page:**  
**B2**

Crescent Mountain Fire  
WA-OWF-000422  
43,484 Acres  
as of 8/28 @ 0004

McLeod Fire  
WA-OWF-000522  
21,915 Acres  
as of 8/28 @ 0053



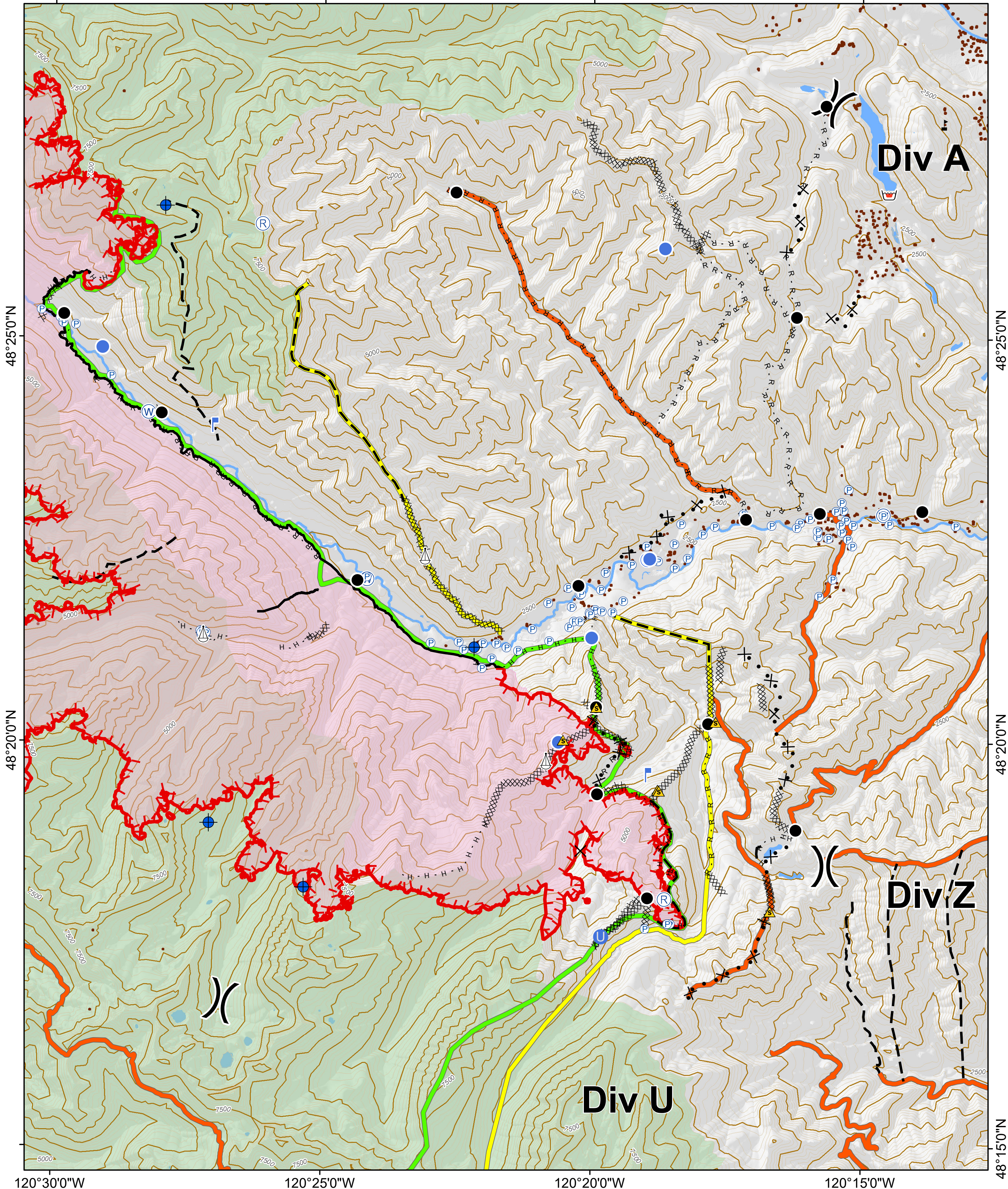
0 0.5 1 2 Miles

120°30'0"W

120°25'0"W

120°20'0"W

120°15'0"W



48°25'0"N

48°25'0"N

48°20'0"N

48°20'0"N

120°30'0"W

120°25'0"W

120°20'0"W

120°15'0"W

48°15'0"N





08/29/2018  
Day Shift

# Map Page: B3

Crescent Mountain Fire  
WA-OWF-000422  
43,484 Acres  
as of 8/28 @ 0004

McLeod Fire  
WA-OWF-000522  
21,915 Acres  
as of 8/28 @ 0053



0 0.5 1 2 Miles

120°20'0"W

120°15'0"W

120°10'0"W

120°5'0"W

48°25'0"N

48°25'0"N

48°20'0"N

48°20'0"N

48°15'0"N

48°15'0"N

120°20'0"W

120°15'0"W

120°10'0"W

120°5'0"W

## Div A

## Div Z

## Div U

