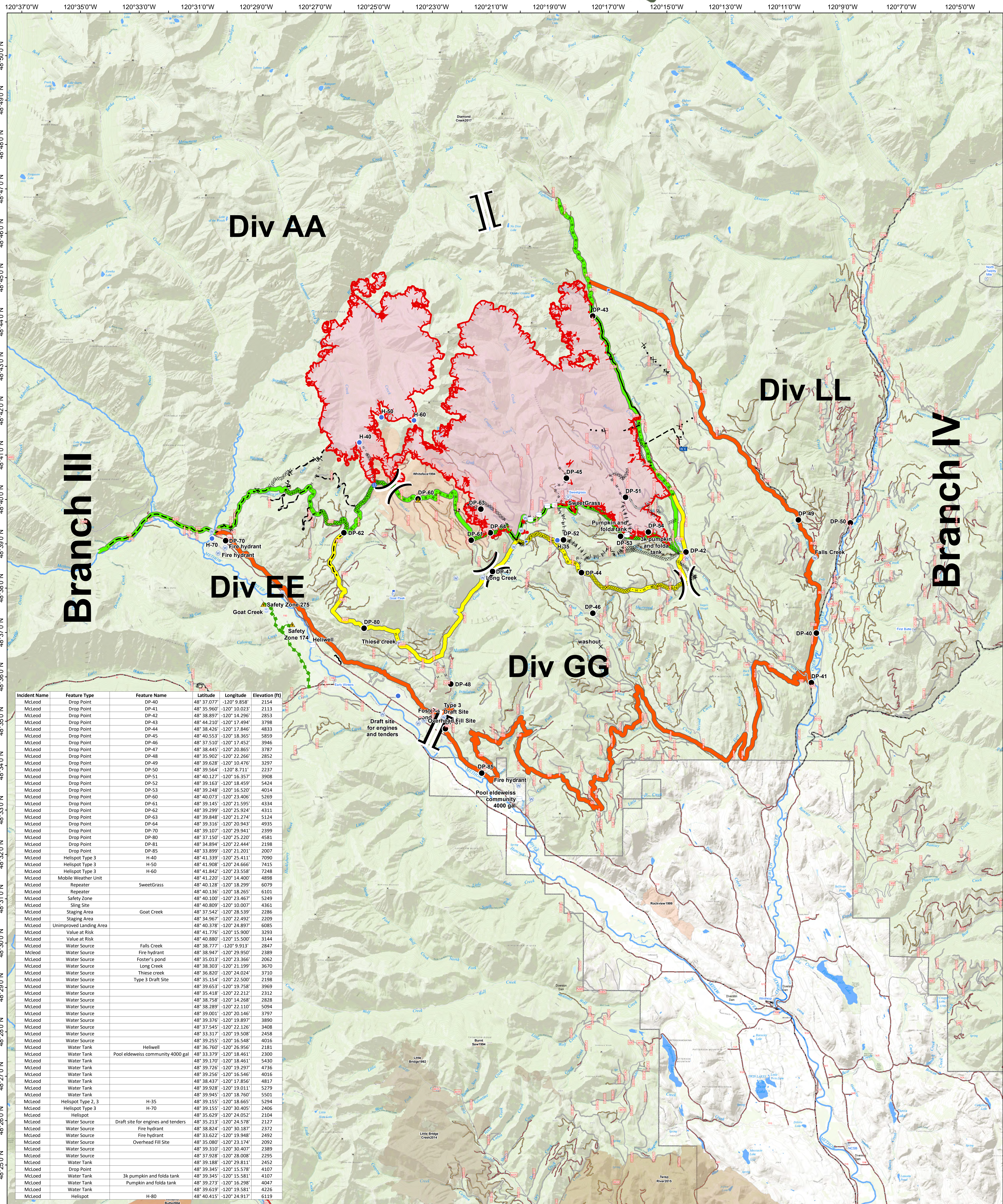


Safety Ops Map

08/29/2018

McLeod Fire
WA-OWF-000522

Approximate Acreage:21,915



Incident Name	Feature Type	Feature Name	Latitude	Longitude	Elevation (ft)
McLeod	Drop Point	DP-40	48° 37.077' N	-120° 9.958' W	2154
McLeod	Drop Point	DP-41	48° 35.960' N	-120° 10.023' W	2113
McLeod	Drop Point	DP-42	48° 38.897' N	-120° 14.296' W	2853
McLeod	Drop Point	DP-43	48° 44.210' N	-120° 17.494' W	3798
McLeod	Drop Point	DP-44	48° 38.426' N	-120° 17.846' W	4833
McLeod	Drop Point	DP-45	48° 40.553' N	-120° 18.365' W	5859
McLeod	Drop Point	DP-46	48° 37.510' N	-120° 17.452' W	3946
McLeod	Drop Point	DP-47	48° 38.445' N	-120° 30.865' W	3787
McLeod	Drop Point	DP-48	48° 35.902' N	-120° 22.266' W	2852
McLeod	Drop Point	DP-49	48° 39.628' N	-120° 10.476' W	3297
McLeod	Drop Point	DP-50	48° 39.564' N	-120° 8.711' W	2237
McLeod	Drop Point	DP-51	48° 40.127' N	-120° 16.357' W	3908
McLeod	Drop Point	DP-52	48° 39.163' N	-120° 18.459' W	5424
McLeod	Drop Point	DP-53	48° 39.248' N	-120° 16.520' W	4014
McLeod	Drop Point	DP-60	48° 40.073' N	-120° 23.406' W	5269
McLeod	Drop Point	DP-61	48° 39.145' N	-120° 21.595' W	4334
McLeod	Drop Point	DP-62	48° 39.299' N	-120° 25.924' W	4311
McLeod	Drop Point	DP-63	48° 39.848' N	-120° 21.274' W	5124
McLeod	Drop Point	DP-64	48° 39.316' N	-120° 20.943' W	4935
McLeod	Drop Point	DP-70	48° 39.107' N	-120° 29.941' W	2399
McLeod	Drop Point	DP-80	48° 37.150' N	-120° 25.220' W	4581
McLeod	Drop Point	DP-81	48° 34.894' N	-120° 22.444' W	2198
McLeod	Drop Point	DP-85	48° 33.899' N	-120° 21.201' W	2007
McLeod	Helispot Type 3	H-40	48° 41.391' N	-120° 25.111' W	7090
McLeod	Helispot Type 3	H-50	48° 41.908' N	-120° 24.666' W	7415
McLeod	Helispot Type 3	H-60	48° 41.842' N	-120° 23.558' W	7248
McLeod	Mobile Weather Unit	SweetGrass	48° 41.220' N	-120° 14.400' W	4898
McLeod	Repeater		48° 40.128' N	-120° 18.299' W	6079
McLeod	Repeater		48° 40.136' N	-120° 18.265' W	6101
McLeod	Safety Zone		48° 40.100' N	-120° 23.467' W	5249
McLeod	Sling Site		48° 40.809' N	-120° 10.007' W	4361
McLeod	Staging Area	Goat Creek	48° 37.842' N	-120° 38.339' W	2286
McLeod	Staging Area		48° 34.967' N	-120° 22.492' W	2209
McLeod	Unimproved Landing Area		48° 40.378' N	-120° 24.897' W	6085
McLeod	Value at Risk		48° 41.776' N	-120° 15.900' W	3293
McLeod	Value at Risk		48° 40.880' N	-120° 15.500' W	3144
McLeod	Water Source	Falls Creek	48° 38.777' N	-120° 9.913' W	2847
McLeod	Water Source	Fire hydrant	48° 38.947' N	-120° 29.950' W	2389
McLeod	Water Source	Foster's pond	48° 35.013' N	-120° 23.666' W	3062
McLeod	Water Source	Long Creek	48° 38.303' N	-120° 21.199' W	3670
McLeod	Water Source	Thisee creek	48° 36.820' N	-120° 24.024' W	3710
McLeod	Water Source	Type 3 Draft Site	48° 35.154' N	-120° 22.500' W	2198
McLeod	Water Source		48° 39.653' N	-120° 19.758' W	3969
McLeod	Water Source		48° 35.418' N	-120° 22.212' W	2312
McLeod	Water Source		48° 38.758' N	-120° 14.268' W	2828
McLeod	Water Source		48° 38.289' N	-120° 21.110' W	5094
McLeod	Water Source		48° 39.001' N	-120° 20.146' W	3707
McLeod	Water Source		48° 39.376' N	-120° 19.897' W	3890
McLeod	Water Source		48° 37.545' N	-120° 22.126' W	3408
McLeod	Water Source		48° 33.317' N	-120° 19.508' W	2458
McLeod	Water Source		48° 39.255' N	-120° 16.548' W	4016
McLeod	Water Tank	Heliwell	48° 36.760' N	-120° 26.956' W	2181
McLeod	Water Tank	Pool elderweiss community 4000 gal	48° 33.379' N	-120° 18.461' W	2300
McLeod	Water Tank		48° 39.701' N	-120° 18.461' W	5430
McLeod	Water Tank		48° 39.726' N	-120° 19.297' W	4736
McLeod	Water Tank		48° 39.256' N	-120° 16.546' W	4016
McLeod	Water Tank		48° 38.437' N	-120° 17.856' W	4817
McLeod	Water Tank		48° 39.928' N	-120° 19.011' W	5279
McLeod	Water Tank		48° 39.945' N	-120° 18.760' W	5501
McLeod	Helispot Type 2, 3	H-35	48° 39.155' N	-120° 18.665' W	5294
McLeod	Helispot Type 3	H-70	48° 39.155' N	-120° 30.405' W	2406
McLeod	Water Source		48° 35.021' N	-120° 24.052' W	2104
McLeod	Water Source	Draft site for engines and tenders	48° 35.213' N	-120° 24.578' W	2127
McLeod	Water Source	Fire hydrant	48° 38.824' N	-120° 30.187' W	2372
McLeod	Water Source	Fire hydrant	48° 33.622' N	-120° 19.948' W	2492
McLeod	Water Source	Overhead Fill Site	48° 35.080' N	-120° 23.174' W	2092
McLeod	Water Source		48° 39.310' N	-120° 30.407' W	2389
McLeod	Water Source		48° 37.928' N	-120° 28.008' W	2295
McLeod	Water Tank		48° 39.188' N	-120° 29.811' W	2452
McLeod	Drop Point		48° 39.345' N	-120° 15.578' W	4107
McLeod	Water Tank	3k pumpkin and folda tank	48° 39.345' N	-120° 15.581' W	4107
McLeod	Water Tank	Pumpkin and folda tank	48° 39.273' N	-120° 16.298' W	4047
McLeod	Water Tank		48° 39.619' N	-120° 19.581' W	4226
McLeod	Helispot	H-80	48° 40.415' N	-120° 24.917' W	6119

Legend:

- X Closure
- Drop Point
- Unimproved Landing Area
- Helispot
- Lookout
- Mobile Weather Unit
- Repeater
- Safety Zone
- Sling Site
- Staging Area
- Water Source
- Water Tank
- Value at Risk
-) (Division Break
- Uncontrolled Fire Edge
- Completed Line
- Completed Dozer Line
- Planned Dozer Line
- Planned Fire Line
- Road as Completed Line
- Access or Improved Road
- Proposed Burnout
- Active Burnout
- Proposed Hand Line
- Escape Route

Roads:

- 1 - BASIC CUSTODIAL CARE (CLOSED)
- 2 - HIGH CLEARANCE VEHICLES
- 3 - SUITABLE FOR PASSENGER CARS
- 4 - MODERATE DEGREE OF USER COMFORT
- CLOSED/DECOMM
- Twist River Road

Contingency Lines:

- primary
- alternate
- contingency

Fire History:

- 1992 - 1999
- 2004
- 2006
- 2014
- 2015

Ranger/District Clip

8/29/2018 @ 0055
NAD 83 USFS R6 Albers (Meters)
SA Blue Team GIS
Latest Intel: 20180828 @ 0053 hrs

All Products QR Code

0 0.5 1 2 3 4 Miles