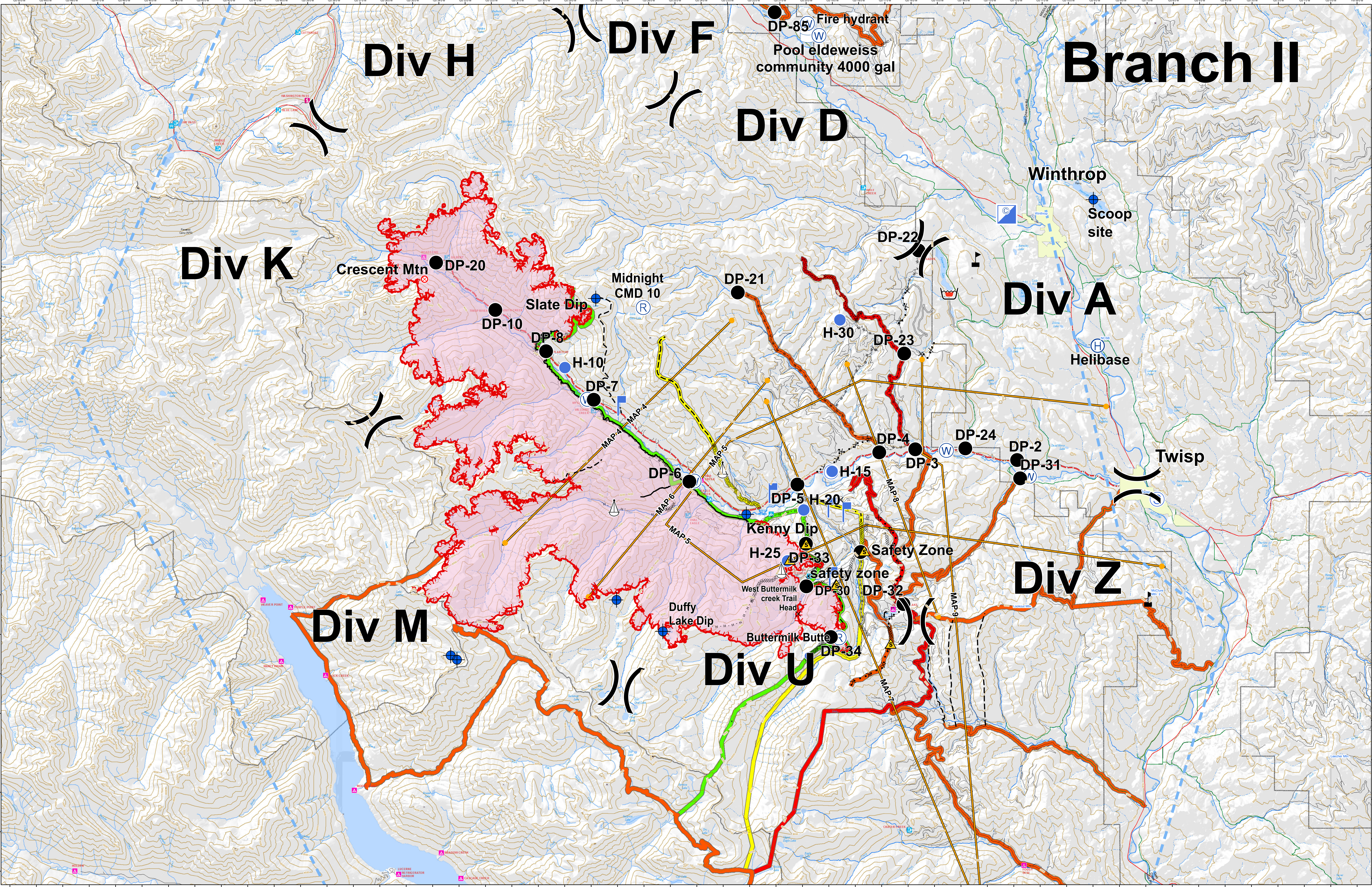




Briefing Map

Crescent Mountain Fire WA-OWF-000428

08/29/2019

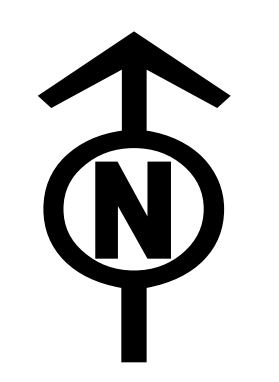


- Safety Zone
- Drop Point
- Helispot
- Camp
- Fire Origin
- Incident Command Post
- Lookout
- Dip Site
- Unimproved Landing Area
- Staging Area
- Repeater
- Retardant/Mud Pit
- Water Tank
- Value at Risk
- Sling Site
- Water Source

- Uncontrolled Fire Edge
- Completed Line
- Completed Dozer Line
- Completed Hand Line
- Road as Completed Line
- Access or Improved Road
- Proposed Dozer Line
- Planned Fire Line
- Aerial Retardant Drop
- Temporary Flight Restriction
- Management Action Point
- Contingency Lines - primary
- Contingency Lines - alternate
- Contingency Lines - contingency
- Contingency Lines - emergency
- Twisp River Road
- Highway
- County Road
- City Road
- USFS road
- Ranger District



Approx Acreage: 43,484



2018-08-28 @ 23:32
NAD 83 USFS R6 Albers (Meters)
SA Blue Team GIS
Latest Intel: 20180828 @ 0004