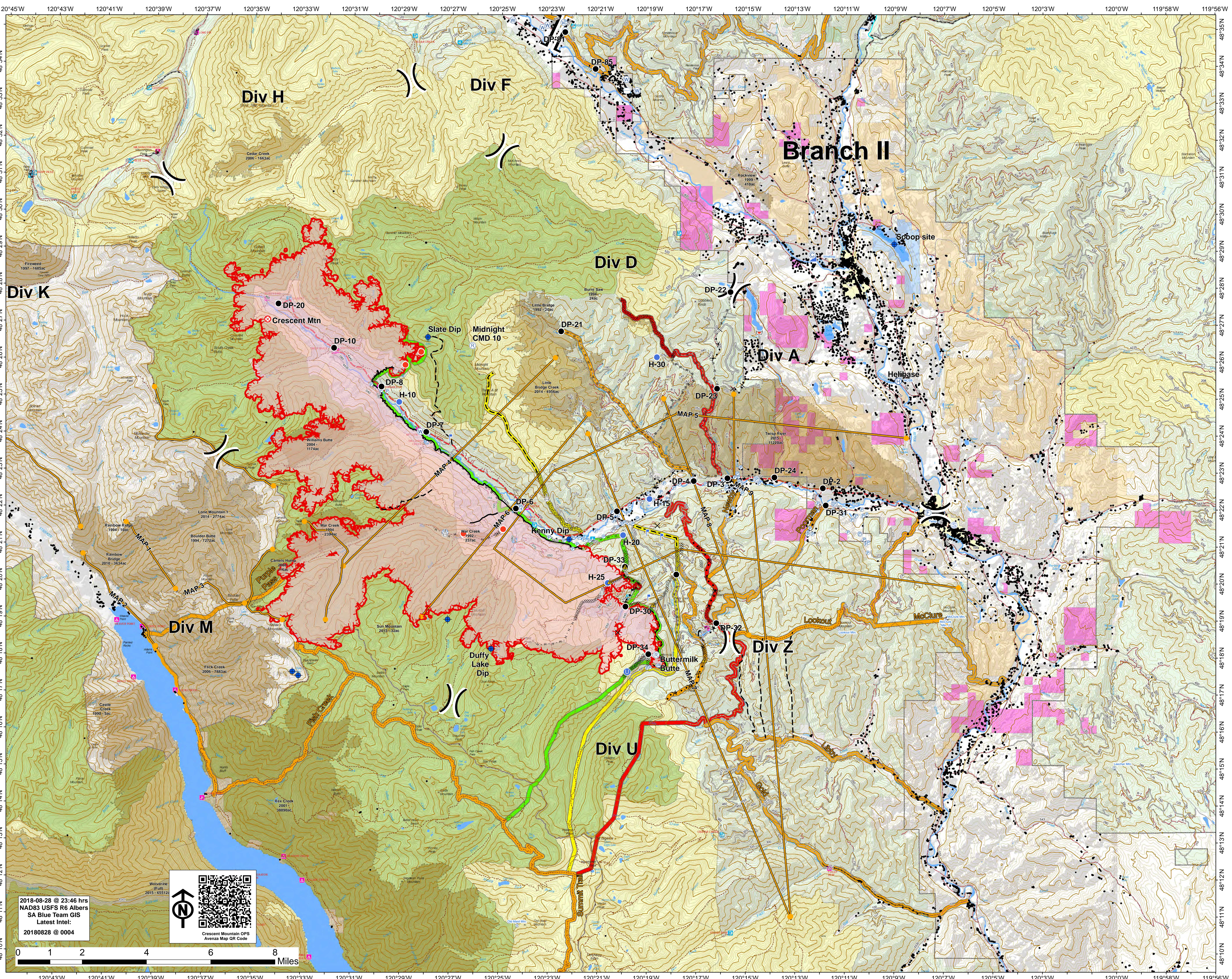




Operations  
Map  
Approx Acreage:  
43,484

- Camp
- Closure
- Dip Site
- Drop Point
- Fire Origin
- Fire Station
- Gate
- Helibase
- Unimproved Landing Area
- Hot Spot
- Incident Command Post
- Internet Access
- Lookout
- Pump
- Repeater
- Retardant/Mud Pit
- Safety Zone
- Sling Site
- Staging Area
- Water Source
- Water Tank
- Value at Risk
- Division Break
- Branch Break
- Uncontrolled Fire Edge
- Completed Line
- Completed Dozer Line
- Completed Hand Line
- Road as Completed Line
- Access or Improved Road
- Proposed Dozer Line
- Planned Fire Line
- Aerial Retardant Drop
- Temporary Flight Restriction
- Management Action Point
- Wildfire Daily Fire Perimeter
- Structure
- Twisp River Road
- Road
  - Basic Custodial Care (Closed)
  - High Clearance Vehicles
  - Suitable for Passenger Cars
  - Moderate Degree of User Comfort
  - Closed/Decommissioned
  - Trail
- Town
- PACE: primary
- PACE: alternate
- PACE: contingency
- PACE: emergency
- Ranger District
- Historical Fire
- Roadless Conservation
- Wilderness
- Owner
  - FS
  - NPS
  - PVT
  - USFWS
  - City or Municipality
  - WA Dept of F&W
  - WA State Parks
  - Washington DNR



2018-08-28 @ 23:46 hrs  
NAD83 USFS R6 Albers  
SA Blue Team GIS  
Latest Intel:  
20180828 @ 0004

