



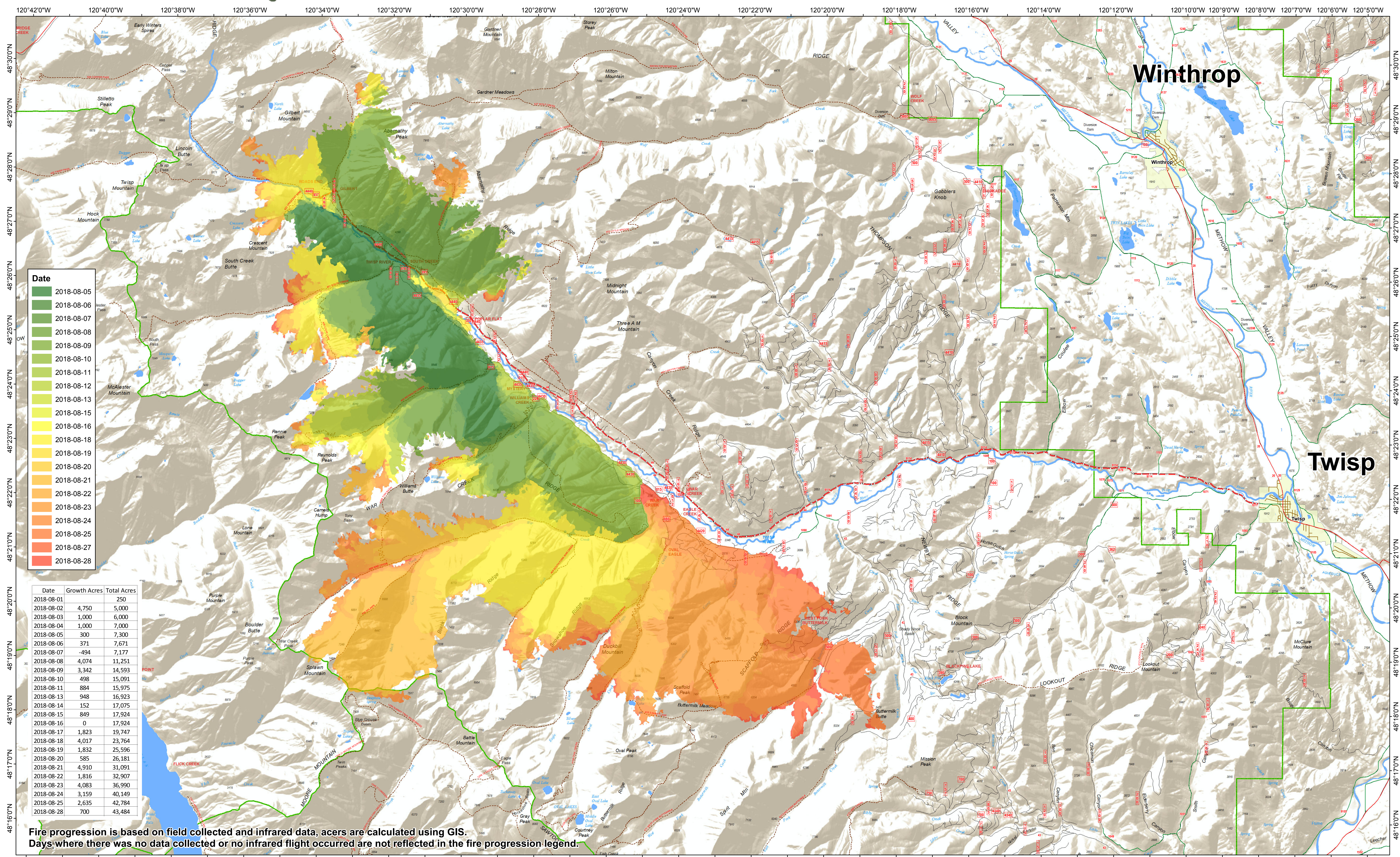
# Fire Progression Map

# Crescent Mountain Fire

WA-OWF-000428

Approximate Acreage: 43,484

08/29/2019



**Date**

- 2018-08-05
- 2018-08-06
- 2018-08-07
- 2018-08-08
- 2018-08-09
- 2018-08-10
- 2018-08-11
- 2018-08-12
- 2018-08-13
- 2018-08-15
- 2018-08-16
- 2018-08-18
- 2018-08-19
- 2018-08-20
- 2018-08-21
- 2018-08-22
- 2018-08-23
- 2018-08-24
- 2018-08-25
- 2018-08-27
- 2018-08-28

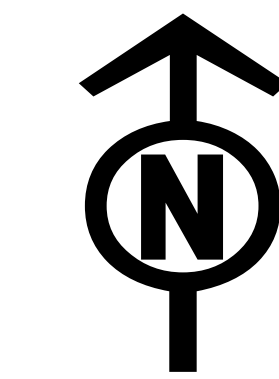
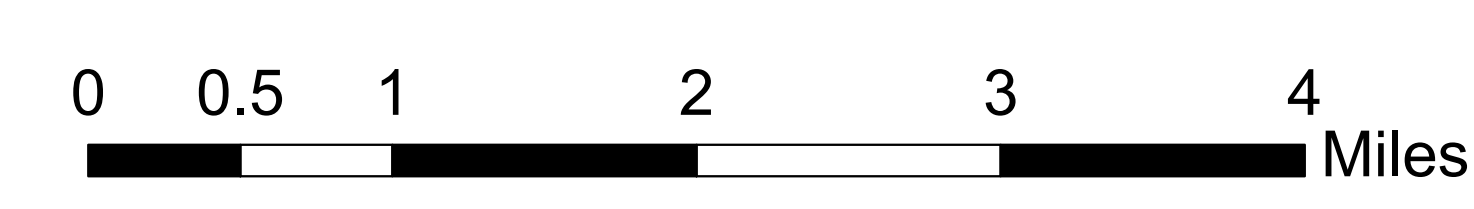
Date	Growth Acres	Total Acres
2018-08-01	250	250
2018-08-02	4,750	5,000
2018-08-03	1,000	6,000
2018-08-04	1,000	7,000
2018-08-05	300	7,300
2018-08-06	371	7,671
2018-08-07	-494	7,177
2018-08-08	4,074	11,251
2018-08-09	3,342	14,593
2018-08-10	498	15,091
2018-08-11	884	15,975
2018-08-13	948	16,923
2018-08-14	152	17,075
2018-08-15	849	17,924
2018-08-16	0	17,924
2018-08-17	1,823	19,747
2018-08-18	4,017	23,764
2018-08-19	1,832	25,596
2018-08-20	585	26,181
2018-08-21	4,910	31,091
2018-08-22	1,816	32,907
2018-08-23	4,083	36,990
2018-08-24	3,159	40,149
2018-08-25	2,635	42,784
2018-08-28	700	43,484

Fire progression is based on field collected and infrared data, acers are calculated using GIS.  
 Days where there was no data collected or no infrared flight occurred are not reflected in the fire progression legend.

- Twisp River Road
- City Road
- Trail
- Ranger District
- Highway
- USFS road
- Towns
- County Road
- Railroad



Daily Map Products



Map Produced: 2018-08-29 @ 0055  
 NAD 83 USFS R6 Albers (Meters)  
 SA Blue Team GIS  
 Latest Intel: 20180828 @ 0004