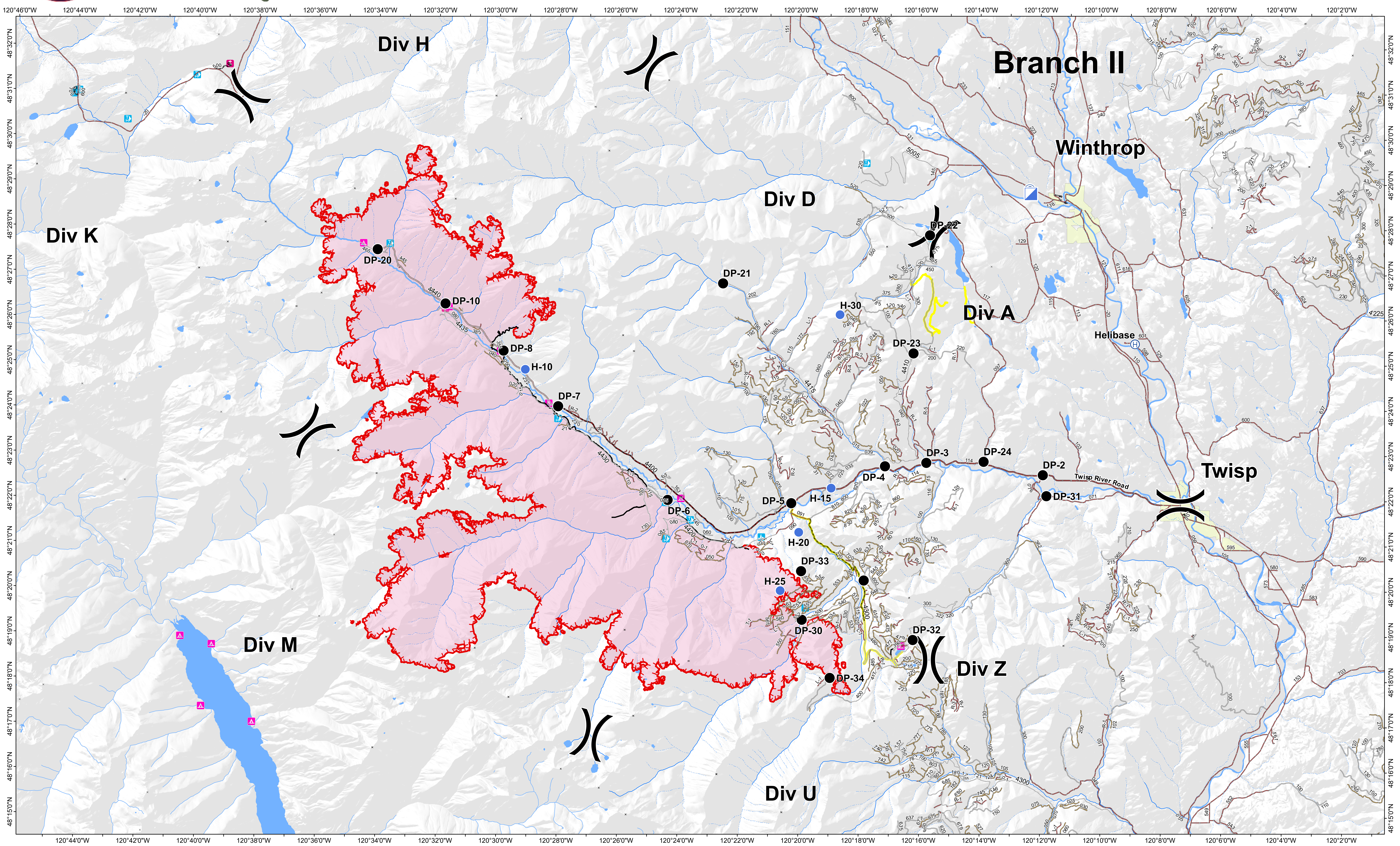




Transportation Map

Crescent Mountain Fire WA-OWF-000428

08/29/2018

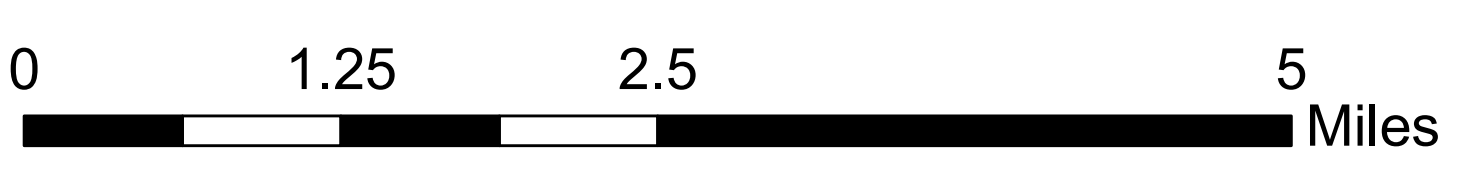


Y:\2018_Crescent_Mountain\project\trans_arch_e_land_2018_Crescent_Mountain_WAOWF428.mxd m.schindler

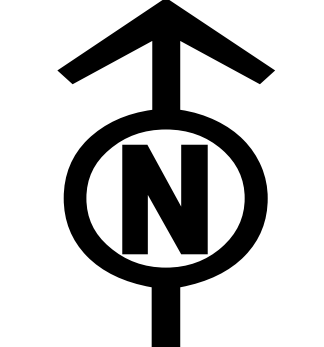
- Division Break
- Camp
- Drop Point
- Helibase
- Helispot
- Incident Command Post
- Campground
- Horse Camp
- Info Site/Fee Station
- Picnic Site
- Snowpark
- Trailhead

- 1 - BASIC CUSTODIAL CARE (CLOSED)
- 2 - HIGH CLEARANCE VEHICLES
- 3 - SUITABLE FOR PASSENGER CARS
- 4 - MODERATE DEGREE OF USER COMFORT
- CLOSED/DECOMM
- Uncontrolled Fire Edge
- Access or Improved Road
- Completed Line
- Twisp River Road

- Other stream
- Perennial
- Intermittent
- Waterbody
- Wildfire Daily Fire Perimeter
- Towns



Approx Acreage: 43,484



08/24/2018 @ 2056
AD 83 USFS R6 Albers (Meters)
SA Blue Team
Latest Intel: 20180828 @ 0004 hrs