

# Air Ops Helibase

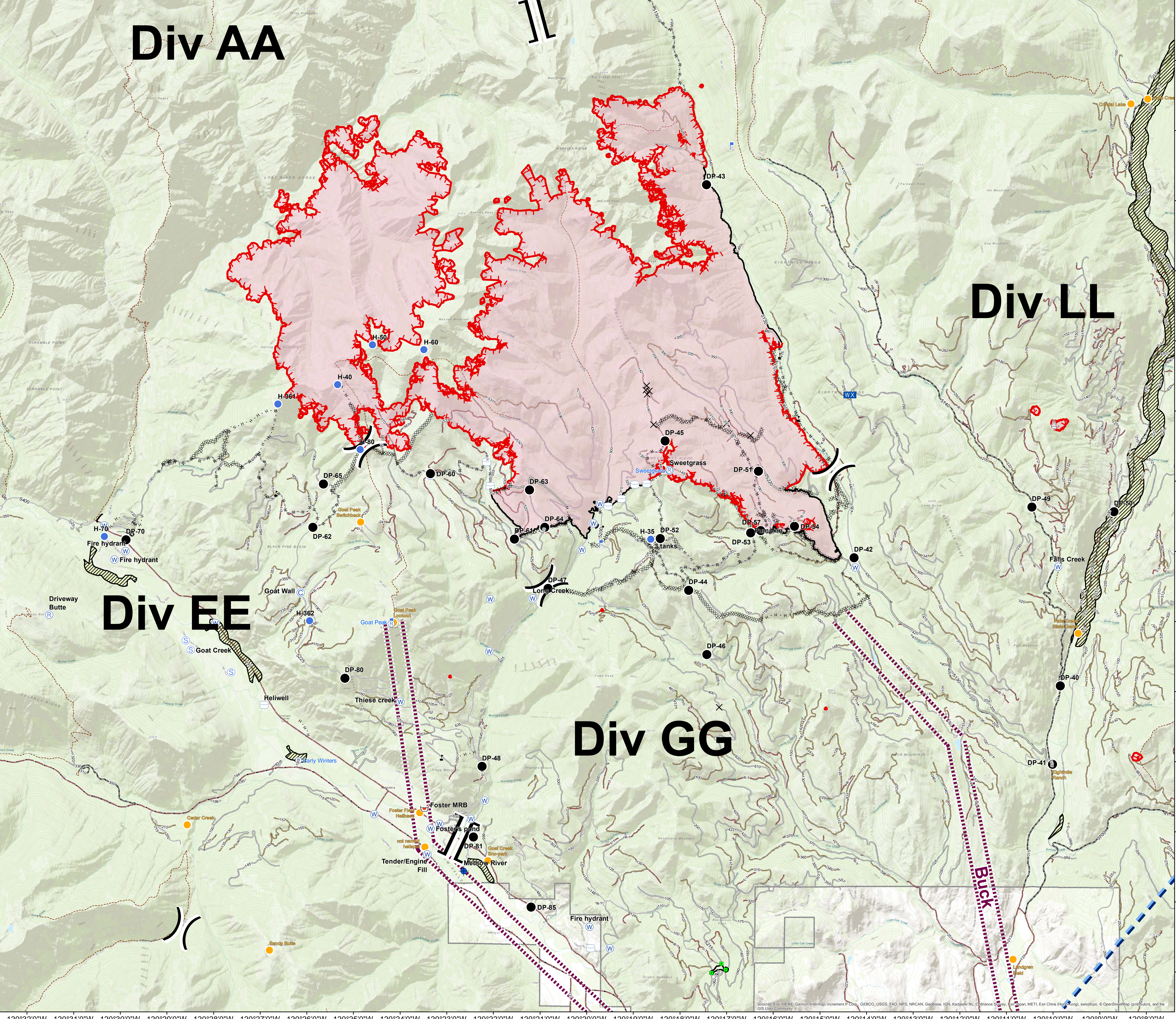
McLeod Fire  
WA-OWF-000522  
Acreage: 22,511



120°32'0"W 120°31'0"W 120°30'0"W 120°29'0"W 120°28'0"W 120°27'0"W 120°26'0"W 120°25'0"W 120°24'0"W 120°23'0"W 120°22'0"W 120°21'0"W 120°20'0"W 120°19'0"W 120°18'0"W 120°17'0"W 120°16'0"W 120°15'0"W 120°14'0"W 120°13'0"W 120°12'0"W 120°11'0"W 120°10'0"W 120°9'0"W 120°8'0"W

Incident Name	Type of Location	Name of Location	Latitude wgs84	Longitude wgs84	Elevation (ft)
Crescent Mountain	Dip Site	Duffy Lake Dip	48° 18.208'	-120° 25.337'	6351
Crescent Mountain	Dip Site	Kenny Dip	48° 21.180'	-120° 22.190'	2344
Crescent Mountain	Dip Site	Scoop site	48° 29.183'	-120° 9.038'	1927
Crescent Mountain	Dip Site	Slate Dip	48° 26.630'	-120° 27.956'	6666
Crescent Mountain	Dip Site		48° 19.000'	-120° 27.100'	5988
Crescent Mountain	Dip Site		48° 17.566'	-120° 33.377'	6346
Crescent Mountain	Dip Site		48° 17.459'	-120° 33.138'	6549
Crescent Mountain	Dip Site	Black Pine Dip	48° 18.667'	-120° 16.700'	4000
Crescent Mountain	Mud Pit	15-MRB	48° 22.305'	-120° 18.901'	
Crescent Mountain	Helispot Type 3	H-10	48° 24.874'	-120° 29.110'	2952
Crescent Mountain	Helispot Type 2	H-15	48° 22.279'	-120° 18.939'	2243
Crescent Mountain	Helispot Type 3	H-20	48° 21.299'	-120° 20.007'	3196
Crescent Mountain	Helispot Type 2	H-25	48° 20.007'	-120° 20.616'	5129
Crescent Mountain	Helispot Type 2	H-30	48° 26.115'	-120° 18.665'	4613
Crescent Mountain	Helispot Type 2	H-150	48° 25.582'	-120° 29.307'	4200
Crescent Mountain	Helispot Type 3	H-220	48° 18.427'	-120° 33.203'	7200
Crescent Mountain	Helispot Type 3	H-291	48° 15.600'	-120° 15.222'	3500
Crescent Mountain	Helispot Type 1	H-292	48° 15.622'	-120° 11.632'	2450
McLeod	Dip Site	Methow River Dip	48° 34.41'	-120° 22.65'	
McLeod	Dip Site	Pine Dip	48° 26.3'	-120° 14.4'	
McLeod	Mud Pit	Foster MRB	48° 35.3'	-120° 23.5'	
McLeod	Helispot	H-35	48° 39.155'	-120° 18.665'	5294
McLeod	Helispot Type 3	H-40	48° 41.339'	-120° 25.411'	7090
McLeod	Helispot Type 3	H-50	48° 41.908'	-120° 24.666'	7415
McLeod	Helispot Type 3	H-60	48° 41.842'	-120° 23.558'	7248
McLeod	Helispot	H-70	48° 39.155'	-120° 30.405'	2406
McLeod	Helispot	H-80	48° 40.415'	-120° 24.917'	6119
McLeod	Helispot Type 3	H-361	48° 41.07'	-120° 26.73'	6473
McLeod	Helispot Type 3	H-362	48° 37.967'	-120° 25.987'	4760
McLeod	Helispot	Proposed helispot	48° 40.941'	-120° 26.718'	6444
McLeod	Helispot		48° 35.629'	-120° 24.052'	2104
McLeod	Helispot		48° 39.150'	-120° 30.402'	2406
McLeod	Water Tank	Heliwell	48° 36.760'	-120° 26.956'	2181

Frequencies	AM	FM TX/RX	AIRCRAFT		
			Type 1	Type 2	Type 3
<b>HELICOPTERS</b>					
Air/Air - TFR (Crescent/McLeod)	127.325		17FH - UH 60A	40729 - UH 1H	41HX - 407 B
Air/Air - McLeod	135.55				
Air/Air - Crescent	120.05				
Air/Grnd McLeod Primary		168.0125	9125M - CH 54A	343WN - UH 1H	911CV - AS 350B3
Air/Grnd McLeod Secondary		168.3375			
Air/Grnd Crescent Primary		171.675	163AC - S 64F	212TH - B212	
Air/Grnd Crescent Sec/Al		168.125	161CG - (S-61)	N205TK - (B205++)	
TOLC - Methow Valley		170.2625	8286 - (UH-60)		
<b>FIXED WING</b>					
N840G (AC-690) @ OMAK					
N 44NC - AC-690 Methow Valley					



● MVRD Helispot ● Helispot  
 ○ Radio Tower ○ Landmark  
 □ Camp □ Lookout  
 X Closure WX Mobile Weather Unit  
 ● Dip Site ● Repeater  
 ● Drop Point ● Retardant/Mud Pit

○ Sling Site ○ Staging Area ○ Water Source ○ Water Tank ○ Value at Risk

— TFR — Flight Routes — Uncontrolled Fire Edge — Completed Line — Completed Dozer Line

H - H - Completed Hand Line R - R - Road as Completed Line — Access or Improved Road

— Road — 1 - BASIC CUSTODIAL CARE (CLOSED) — 2 - HIGH CLEARANCE VEHICLES — 3 - SUITABLE FOR PASSENGER CARS — 4 - MODERATE DEGREE OF USER COMFORT — CLOSED/DECOMM — Trails

— Wildfire Daily Fire Perimeter — Retardant Avoidance Areas

9/4/2018 @ 2304  
NAD 83 USFS R6 Albers (Meters)

**09/05/2018**

0 0.45 0.9 1.8 2.7 3.6 Miles