

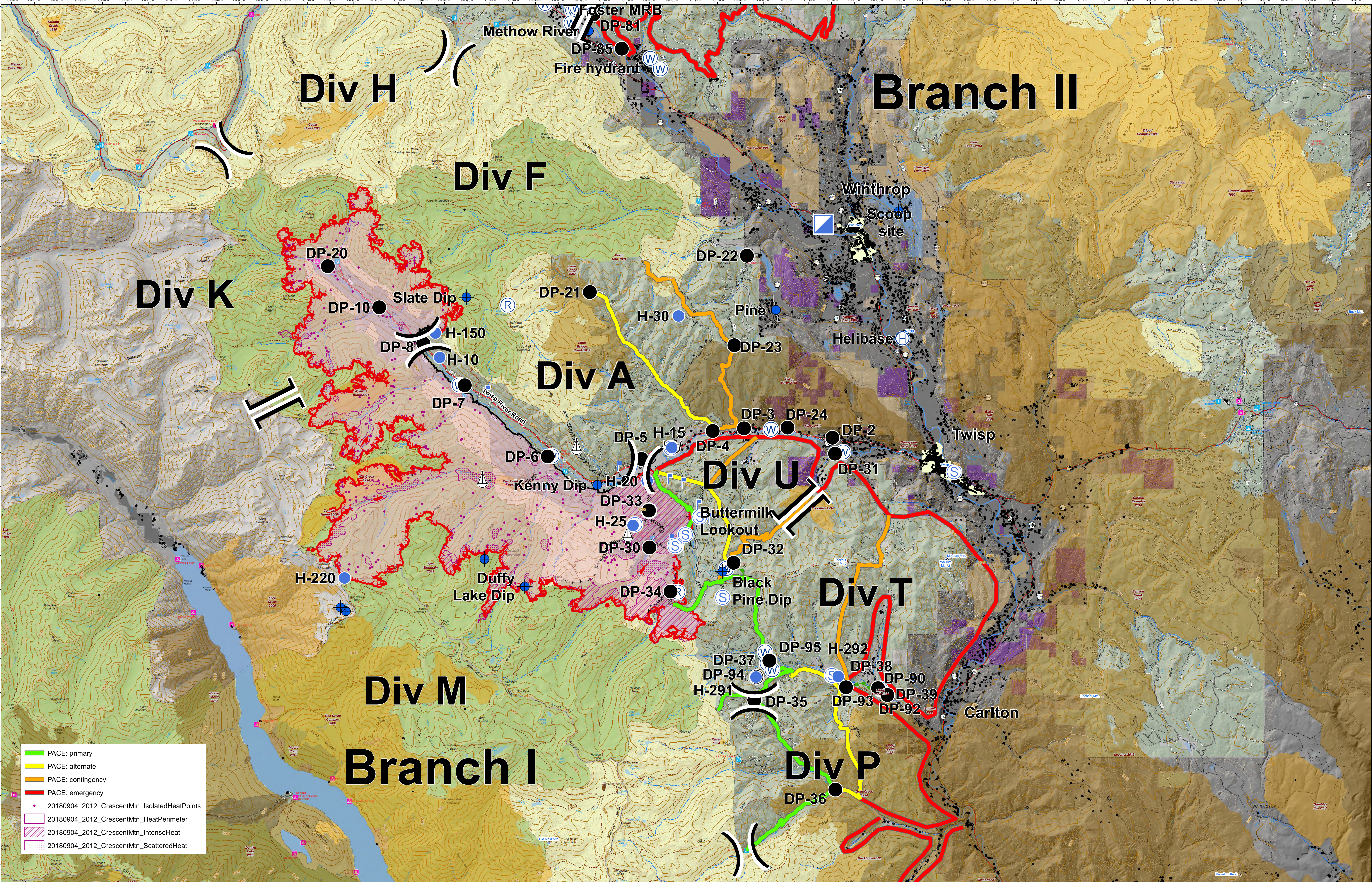


Briefing Map

Crescent Mountain Fire WA-OWF-000428

Approx Acreage: 49,277

09/05/2018



— PACE: primary
— PACE: alternate
— PACE: contingency
— PACE: emergency
• 20180904_2012_CrescentMtn_IsolatedHeatPoints
 20180904_2012_CrescentMtn_HeatPerimeter
 20180904_2012_CrescentMtn_IntenseHeat
 20180904_2012_CrescentMtn_ScatteredHeat

<ul style="list-style-type: none"> ● Camp ● Dip Site ● Drop Point ⊕ Helibase ● Helispot ⊕ Incident Command Post ⊕ Lookout ⊕ Repeater ⊕ Retardant/Mud Pit ⊕ Sling Site ⊕ Staging Area ⊕ Water Source ⊕ Division Break ⊕ Branch Break ⊕ Structure ⊕ Uncontrolled Fire Edge ⊕ Completed Line ⊕ Completed Dozer Line ⊕ Completed Hand Line ⊕ Road as Completed Line ⊕ Access or Improved Road ⊕ Proposed Dozer Line ⊕ Planned Fire Line ⊕ Air Tanker Retardant ⊕ Escape Route 	<p>Fire History</p> <ul style="list-style-type: none"> 1990-1999 2000-2009 2010-2014 2015-2017 	<p>Land Manager</p> <ul style="list-style-type: none"> FS NPS PVT USFWS Wilderness Roadless Conservation 	<p>City or Municipality</p> <ul style="list-style-type: none"> WA Dept of F&W WA State Parks Washington DNR
--	---	---	---

