

**Crescent Mountain
WA-OWF-000428
09/05/2018 Day**



**Operations
Map**
Approx Acreage:
49,277

- Camp
- Closure
- Dip Site
- Drop Point
- Fire Origin
- Fire Station
- Gate
- Helibase
- Helispot
- Hot Spot
- Incident Command Post
- Landmark
- Lookout
- Pump
- Repeater
- Retardant/Mud Pit
- Sling Site
- Spot Fire
- Staging Area
- Water Source
- Water Tank
- Value at Risk
- Division Break
- Branch Break

- Wildfire Daily Fire Perimeter
- Structure
- Town
- Ranger District
- Roadless Conservation
- Wilderness
- Owner**
- FS
- NPS
- PVT
- USFWS
- State Owned and Managed Lands
MANAGER**
- City or Municipality
- WA Dept of F&W
- WA State Parks
- Washington DNR

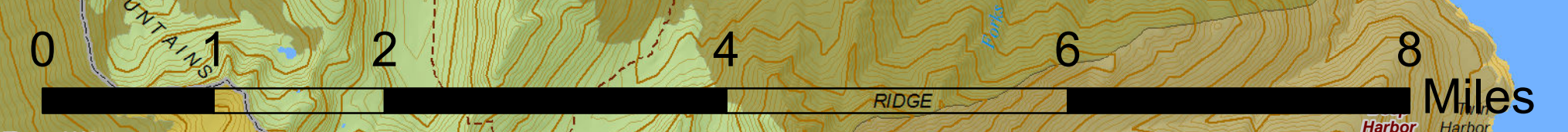
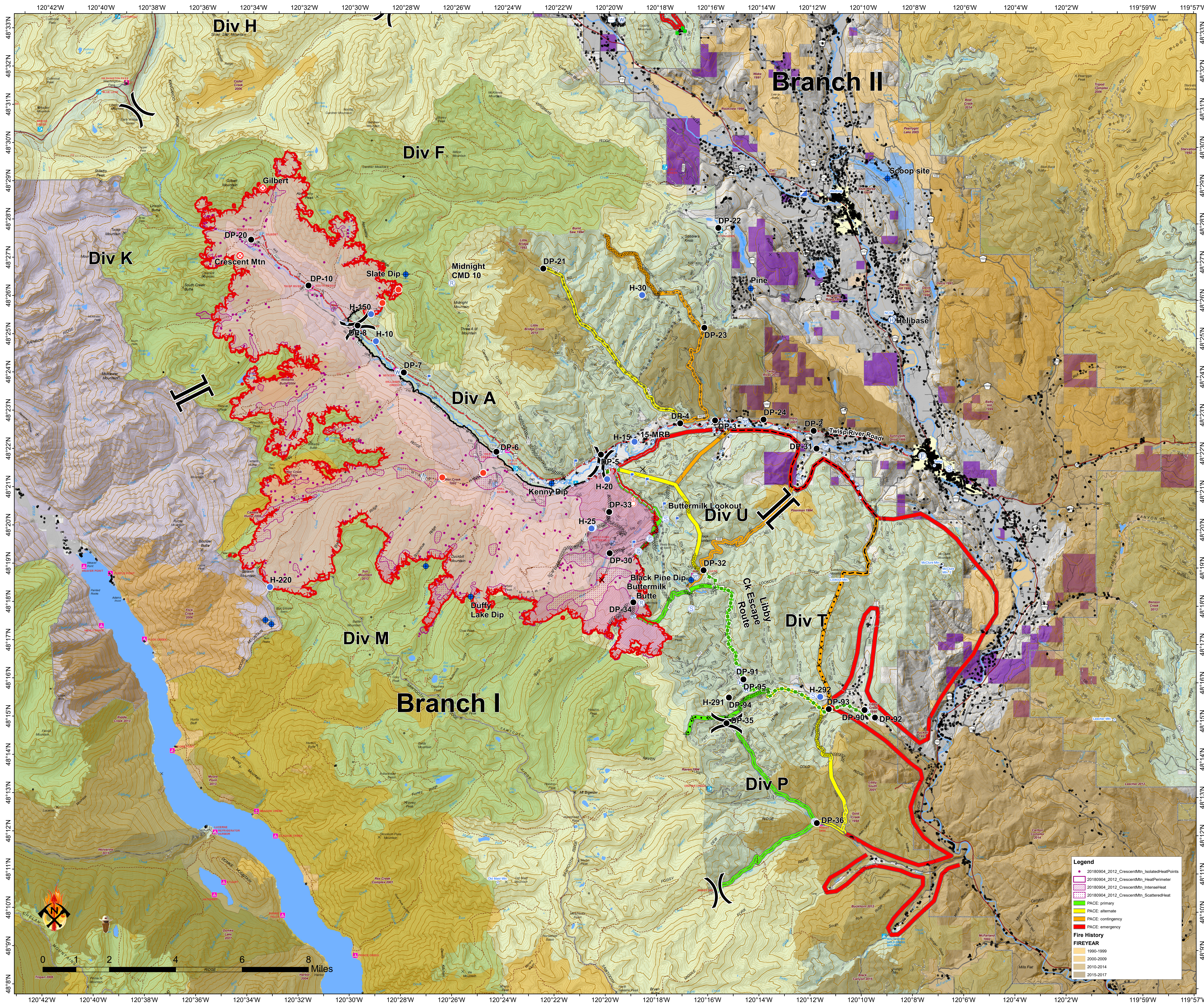
Legend

- 20180904_2012_CrescentMtn_IsolatedHeatPoints
- 20180904_2012_CrescentMtn_HeadPerimeter
- 20180904_2012_CrescentMtn_IntenseHeat
- 20180904_2012_CrescentMtn_ScatteredHeat
- PACE: primary
- PACE: alternate
- PACE: contingency
- PACE: emergency

Fire History

FIREYEAR

- 1990-1999
- 2000-2009
- 2010-2014
- 2015-2017



Crescent Mountain OPS
Avenida Map QR Code