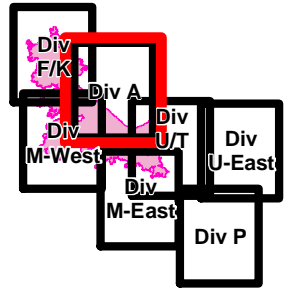


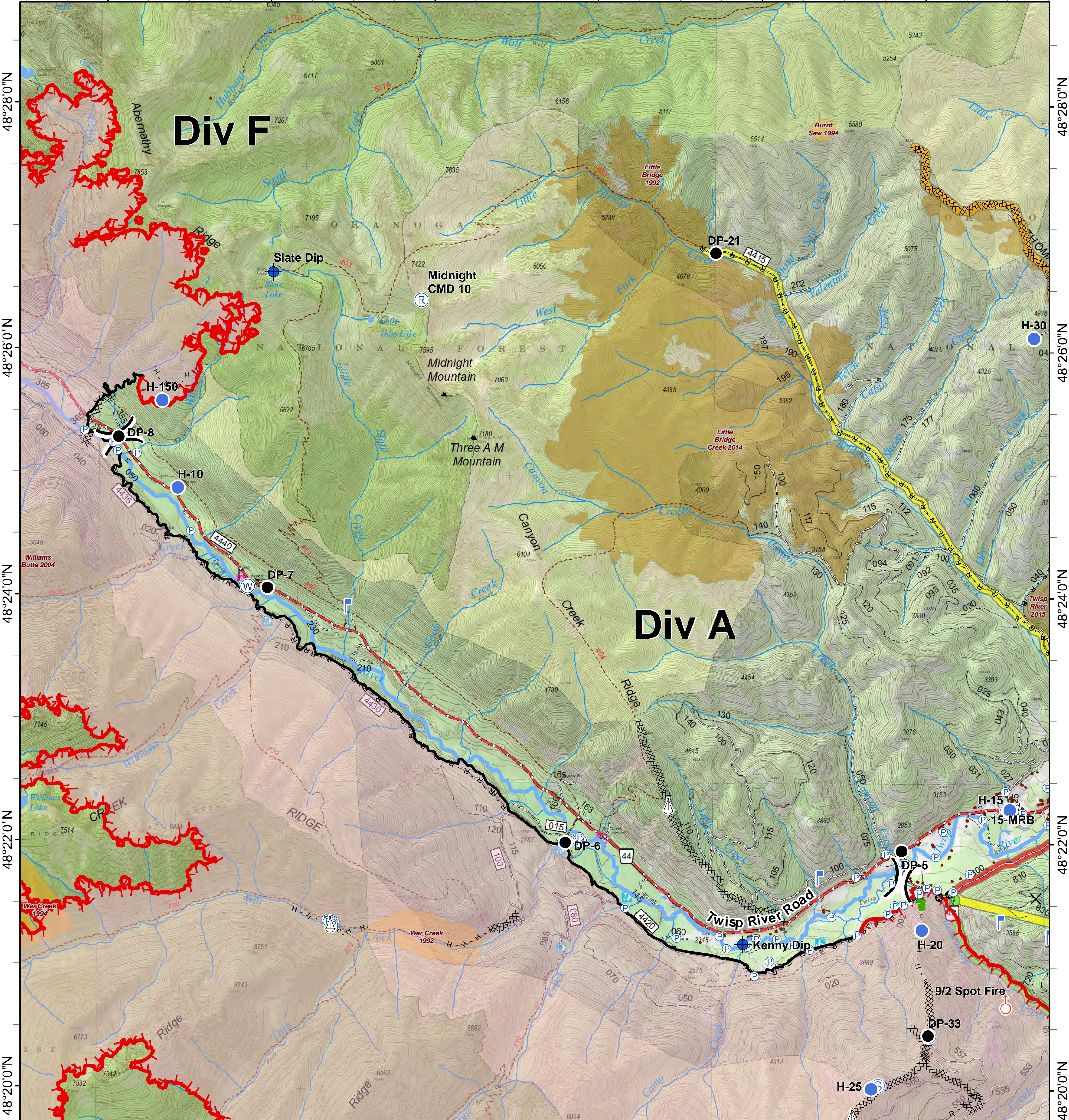


# Crescent Mountain Fire

WA-OWF-000422  
48,866 Acres  
as of 9/1 @ 0037



120°30'0"W      120°28'0"W      120°26'0"W      120°24'0"W      120°22'0"W      120°20'0"W



48°28'0"N      48°26'0"N      48°24'0"N      48°22'0"N      48°20'0"N

0 0.25 0.5 1 Miles

|  |  |  |   |   |  |  |   |
|--|--|--|---|---|--|--|---|
| <ul style="list-style-type: none"> <li>✕ Closure</li> <li>● Dip Site</li> <li>● Drop Point</li> <li>● Helispot</li> <li>📍 Lookout</li> <li>Ⓟ Pump</li> </ul> | <ul style="list-style-type: none"> <li>Ⓡ Repeater</li> <li>🛑 Retardant/Mud Pit</li> <li>📍 Sling Site</li> <li>🔥 Spot Fire</li> <li>📍 Staging Area</li> </ul> | <ul style="list-style-type: none"> <li>Ⓜ Water Source</li> <li>⎓ Division Break</li> <li>Ⓜ Air Tanker Retardant</li> <li>➡ Escape Route</li> <li>⊕ Other</li> <li>⋯ Trail</li> </ul> | <ul style="list-style-type: none"> <li>⊘ Completed Dozer Line</li> <li>H - H Completed Hand Line</li> <li>R - R Road as Completed Line</li> <li>➡ Air Tanker Retardant</li> <li>➡ Escape Route</li> <li>⊕ Other</li> <li>⋯ Trail</li> </ul> | <ul style="list-style-type: none"> <li>— Twisp River Road</li> <li>— County Roads</li> <li>— Other County Roadsd</li> <li>— City, Private Roads</li> <li>— Paved Road</li> <li>— Gravel Road, Suitable for Passenger Car</li> <li>— Dirt Road, Suitable for Passenger Car</li> <li>— Road Not Suitable for Passenger Car</li> </ul> | <ul style="list-style-type: none"> <li>— Closed Road</li> <li>— Existing "Unauthorized" Roads</li> <li>— Decommissioned Roads</li> <li>— Structure</li> <li>— Wildfire Daily Fire Perimeter</li> <li>— PACE: primary</li> <li>— PACE: alternate</li> <li>— PACE: contingency</li> <li>— PACE: emergency</li> </ul> | <p><b>FIREYEAR</b></p> <ul style="list-style-type: none"> <li>1990-1999</li> <li>2000-2009</li> <li>2010-2014</li> <li>2015-2017</li> <li>Roadless Conservation</li> <li>Wilderness</li> </ul> | <ul style="list-style-type: none"> <li>FS</li> <li>PVT</li> </ul> |
|--|--|--|---|---|--|--|---|

