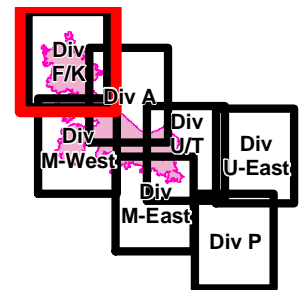


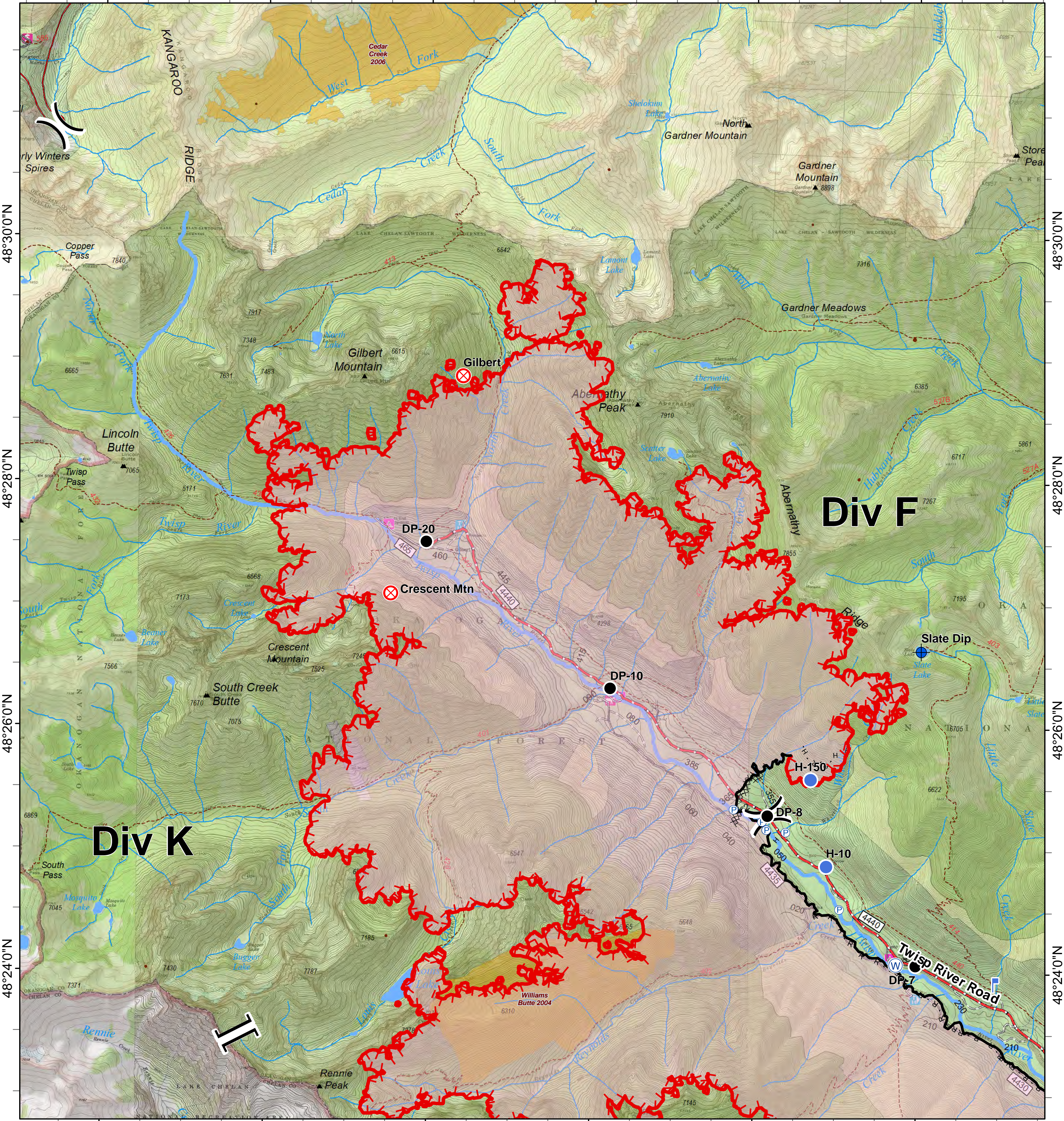


Crescent Mountain Fire

WA-OWF-000422
48,866 Acres
as of 9/1 @ 0037



120°38'0"W 120°36'0"W 120°34'0"W 120°32'0"W 120°30'0"W 120°28'0"W



0 0.25 0.5 1 Miles

- | | | | | | | |
|-------------|----------------|---|---|-------------------------------|-----------------------|-----|
| Dip Site | Lookout | Completed Line | Twisp River Road | Closed Road | FIREYEAR | FS |
| Drop Point | Pump | Completed Dozer Line | Highway | Existing "Unauthorized" Roads | 2000-2009 | NPS |
| Fire Origin | Water Source | H - H Completed Hand Line | City, Private Roads | Structure | Roadless Conservation | PVT |
| Helispot | Division Break | R - R Road as Completed Line | Paved Road | Wildfire Daily Fire Perimeter | Wilderness | |
| | Branch Break | Gravel Road, Suitable for Passenger Car | Gravel Road, Suitable for Passenger Car | | | |
| | | Dirt Road, Suitable for Passenger Car | Dirt Road, Suitable for Passenger Car | | | |
| | | Road Not Suitable for Passenger Car | Road Not Suitable for Passenger Car | | | |
| | | Trail | | | | |
- Uncontrolled Fire Edge

