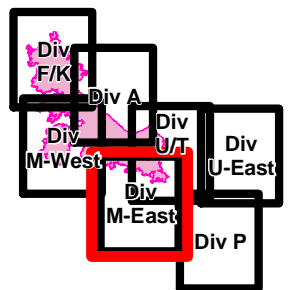




Crescent Mountain Fire

WA-OWF-000422
48,866 Acres
as of 9/1 @ 0037



120°26'0"W

120°24'0"W

120°22'0"W

120°20'0"W

120°18'0"W

120°16'0"W

48°18'0"N

48°16'0"N

48°14'0"N

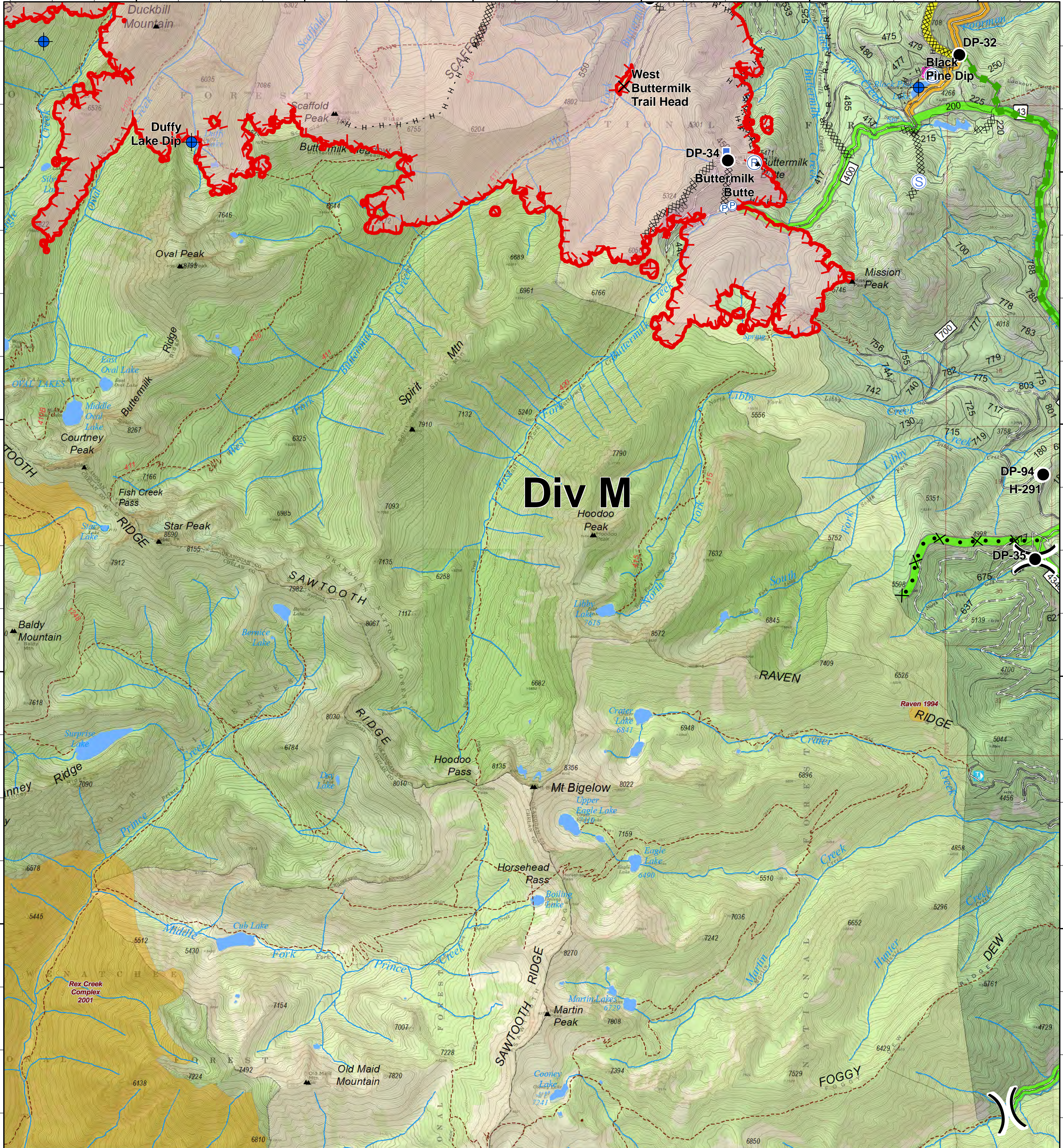
48°12'0"N

48°18'0"N

48°16'0"N

48°14'0"N

48°12'0"N



Div M

<ul style="list-style-type: none"> Closure Dip Site Drop Point Helispot 	<ul style="list-style-type: none"> Lookout Pump Repeater Staging Area 	<ul style="list-style-type: none"> Water Source Division Break 	<ul style="list-style-type: none"> Completed Dozer Line Completed Hand Line Road as Completed Line Proposed Dozer Line Escape Route Uncontrolled Fire Edge Trail City, Private Roads Gravel Road, Suitable for Passenger Car Dirt Road, Suitable for Passenger Car Road Not Suitable for Passenger Car 	<ul style="list-style-type: none"> Closed Road Existing "Unauthorized" Roads Decommissioned Roads Structure Wildfire Daily Fire Perimeter PACE: primary PACE: alternate PACE: contingency 	<p>FIREYEAR</p> <ul style="list-style-type: none"> 1990-1999 2000-2009 Roadless Conservation Wilderness 	<ul style="list-style-type: none"> FS
---	---	--	--	---	--	---

0 0.25 0.5 1 Miles