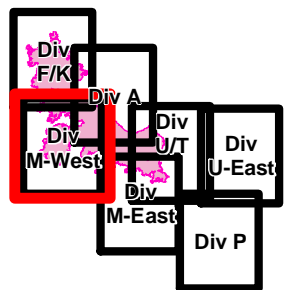




Crescent Mountain Fire

WA-OWF-000422
48,866 Acres
as of 9/1 @ 0037



120°36'0"W

120°34'0"W

120°32'0"W

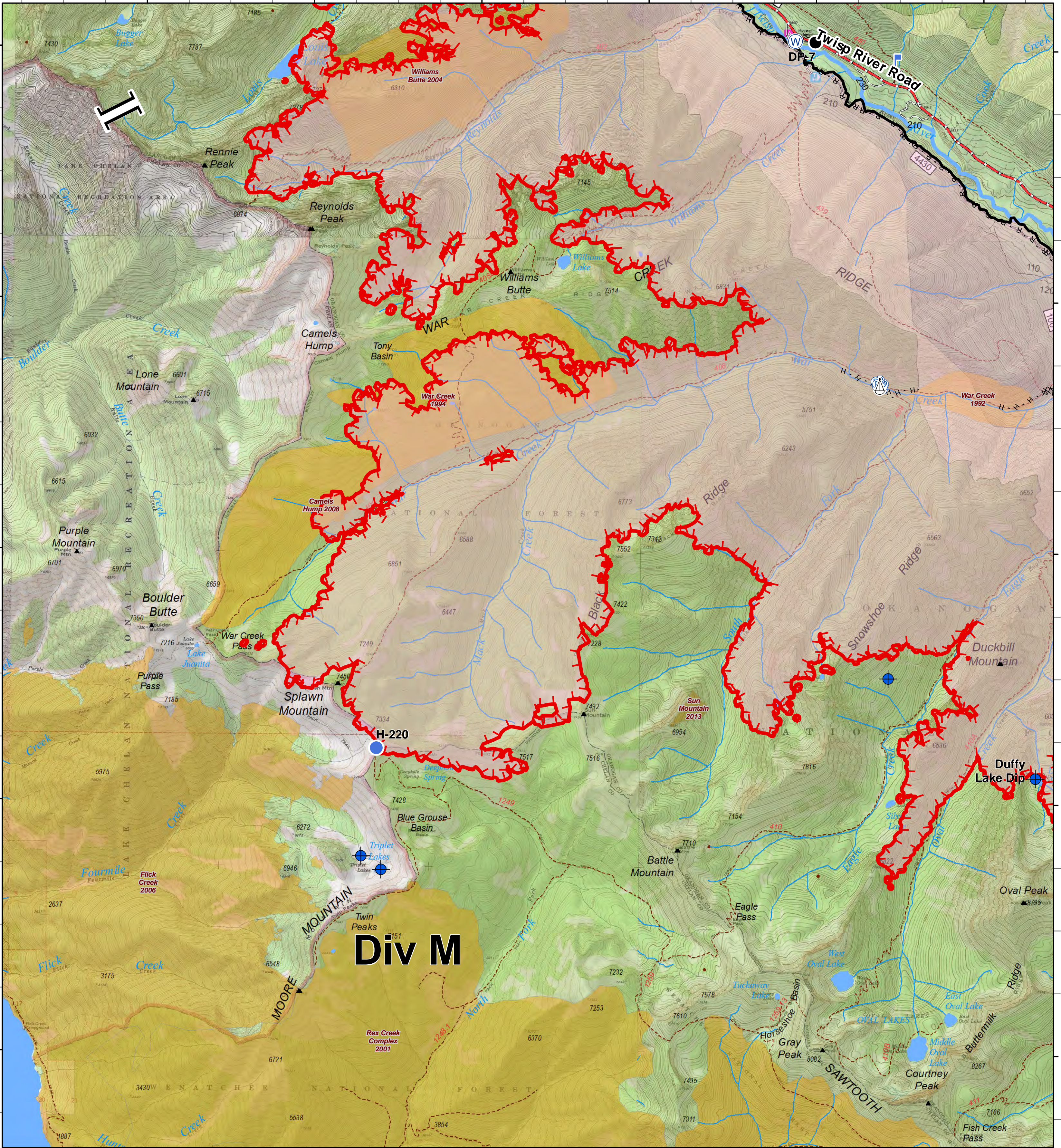
120°30'0"W

120°28'0"W

120°26'0"W

48°24'0"N
48°22'0"N
48°20'0"N
48°18'0"N
48°16'0"N

48°24'0"N
48°22'0"N
48°20'0"N
48°18'0"N
48°16'0"N



120°36'0"W

120°34'0"W

120°32'0"W

120°30'0"W

120°28'0"W

120°26'0"W

0 0.25 0.5 1 Miles

- Dip Site
- Lookout
- Drop Point
- Helispot
- Pump
- Sling Site
- Water Source
- Branch Break
- Uncontrolled Fire Edge

- Twisp River Road
- Completed Line
- Completed Dozer Line
- H - H Completed Hand Line
- R - R Road as Completed Line
- Trail
- Closed Road
- Existing "Unauthorized" Roads
- Decommissioned Roads
- Structure
- Wildfire Daily Fire Perimeter
- Road Not Suitable for Passenger Car
- Paved Road
- Gravel Road, Suitable for Passenger Car
- Dirt Road, Suitable for Passenger Car

- FIREYEAR**
- 1990-1999
 - 2000-2009
 - 2010-2014
 - Roadless Conservation
 - Wilderness

- FS
- NPS
- PVT

