

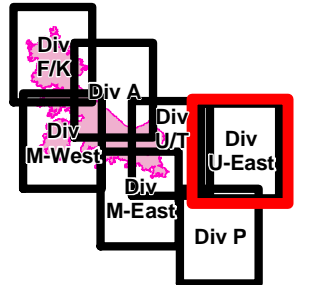


# Crescent Mountain Fire

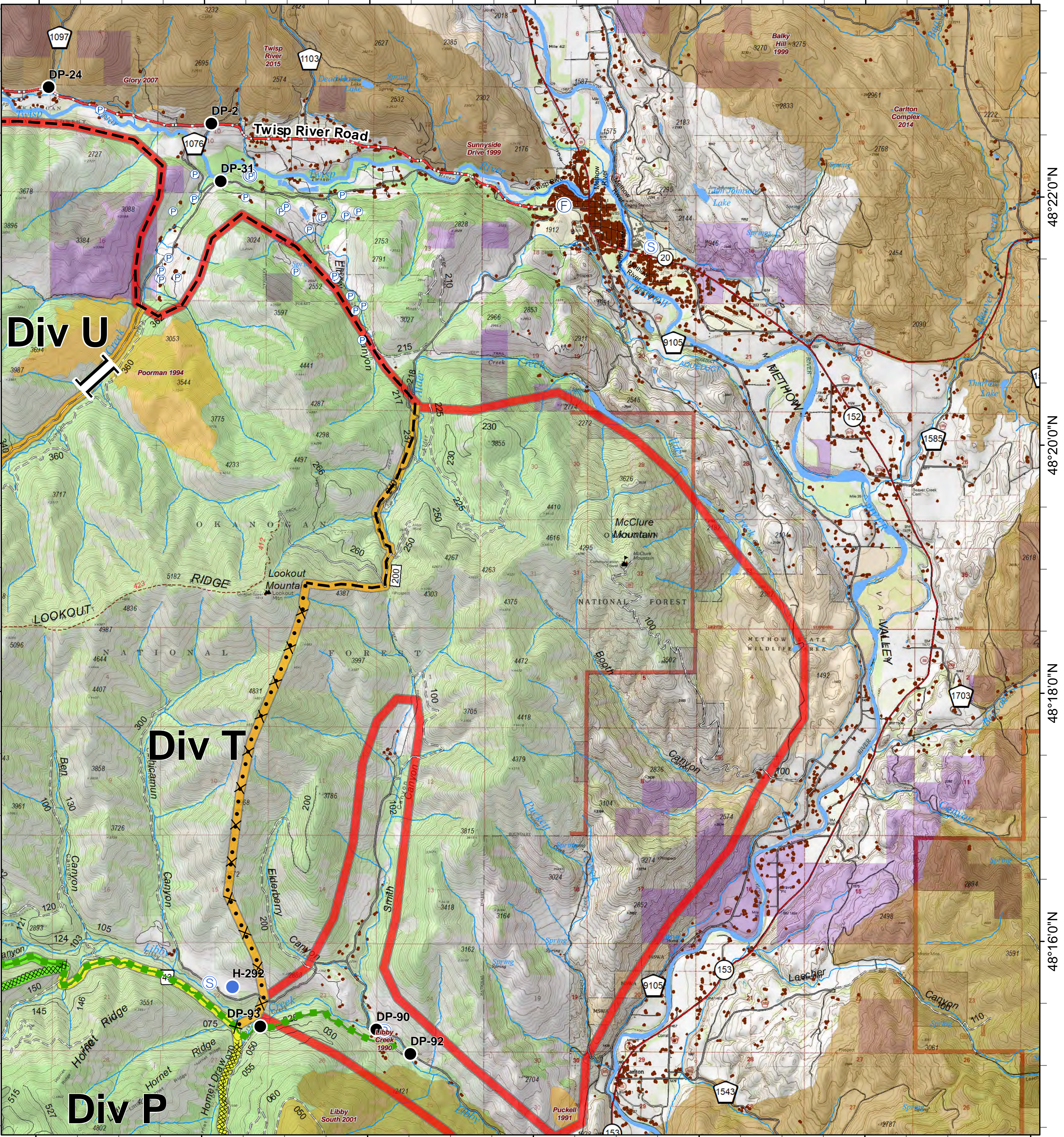
WA-OWF-000422

48,866 Acres

as of 9/1 @ 0037



120°14'0"W 120°12'0"W 120°10'0"W 120°8'0"W 120°6'0"W 120°4'0"W 120°2'0"W



- Drop Point
- ⊙ Staging Area
- ⊕ Fire Station
- ⊕ Water Source
- Helispot
- ⊕ Value at Risk
- ⊕ Pump
- ⌋ Branch Break
- ⊗ Proposed Dozer Line
- ⊖ Planned Fire Line
- ⊖ Escape Route
- ⊖ Trail
- ⊗ Completed Dozer Line

- Twisp River Road
- Highway
- County Roads
- Other County Roadsd
- City, Private Roads
- Private/Other Roads
- Paved Road
- Gravel Road, Suitable for Passenger Car
- Dirt Road, Suitable for Passenger Car
- Road Not Suitable for Passenger Car
- Closed Road
- Existing "Unauthorized" Roads
- Structure
- PACE: primary
- PACE: alternate
- PACE: contingency
- PACE: emergency

- FIREYEAR**
- 1990-1999
  - 2000-2009
  - 2010-2014
  - 2015-2017

- FS
- PVT
- WA Dept of F&W
- Washington DNR

