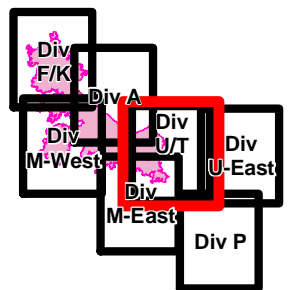




Crescent Mountain Fire

WA-OWF-000422
48,866 Acres
as of 9/1 @ 0037



120°22'0"W

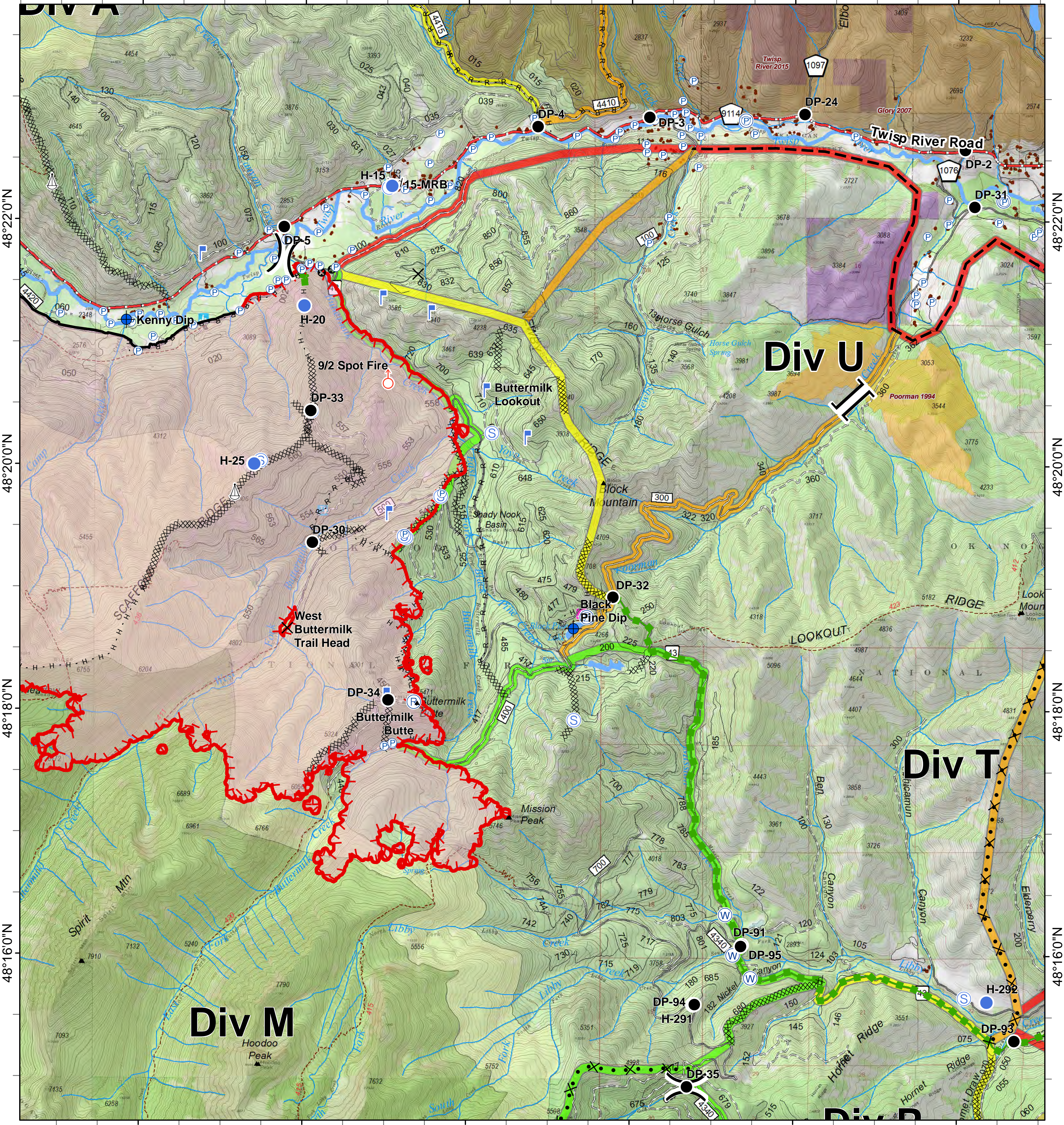
120°20'0"W

120°18'0"W

120°16'0"W

120°14'0"W

120°12'0"W



<ul style="list-style-type: none"> ✕ Closure ⊙ Dip Site ● Drop Point ⊙ Helispot ⊙ Lookout ⊙ Pump ⊙ Repeater ⊙ Retardant/Mud Pit ⊙ Sling Site ⊙ Spot Fire ⊙ Staging Area ⊙ Water Source ⊙ Division Break ⊙ Branch Break ⊙ Uncontrolled Fire Edge ⊙ Completed Line ⊙ Completed Dozer Line ⊙ H · H Completed Hand Line ⊙ R · R Road as Completed Line ⊙ Proposed Dozer Line ⊙ Planned Fire Line ⊙ Air Tanker Retardant ⊙ Escape Route ⊙ Other ⊙ Trail 	<ul style="list-style-type: none"> — Twisp River Road — County Roads — Other County Roads — City, Private Roads — Paved Road — Gravel Road, Suitable for Passenger Car — Dirt Road, Suitable for Passenger Car — Road Not Suitable for Passenger Car 	<ul style="list-style-type: none"> — Closed Road — Existing "Unauthorized" Roads — Decommissioned Roads — Structure — Wildfire Daily Fire Perimeter — PACE: primary — PACE: alternate — PACE: contingency — PACE: emergency 	<p>FIREYEAR</p> <ul style="list-style-type: none"> 1990-1999 2000-2009 2015-2017 Roadless Conservation Wilderness 	<ul style="list-style-type: none"> FS PVT WA Dept of F&W Washington DNR
---	--	--	---	---

