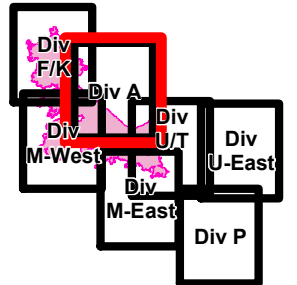


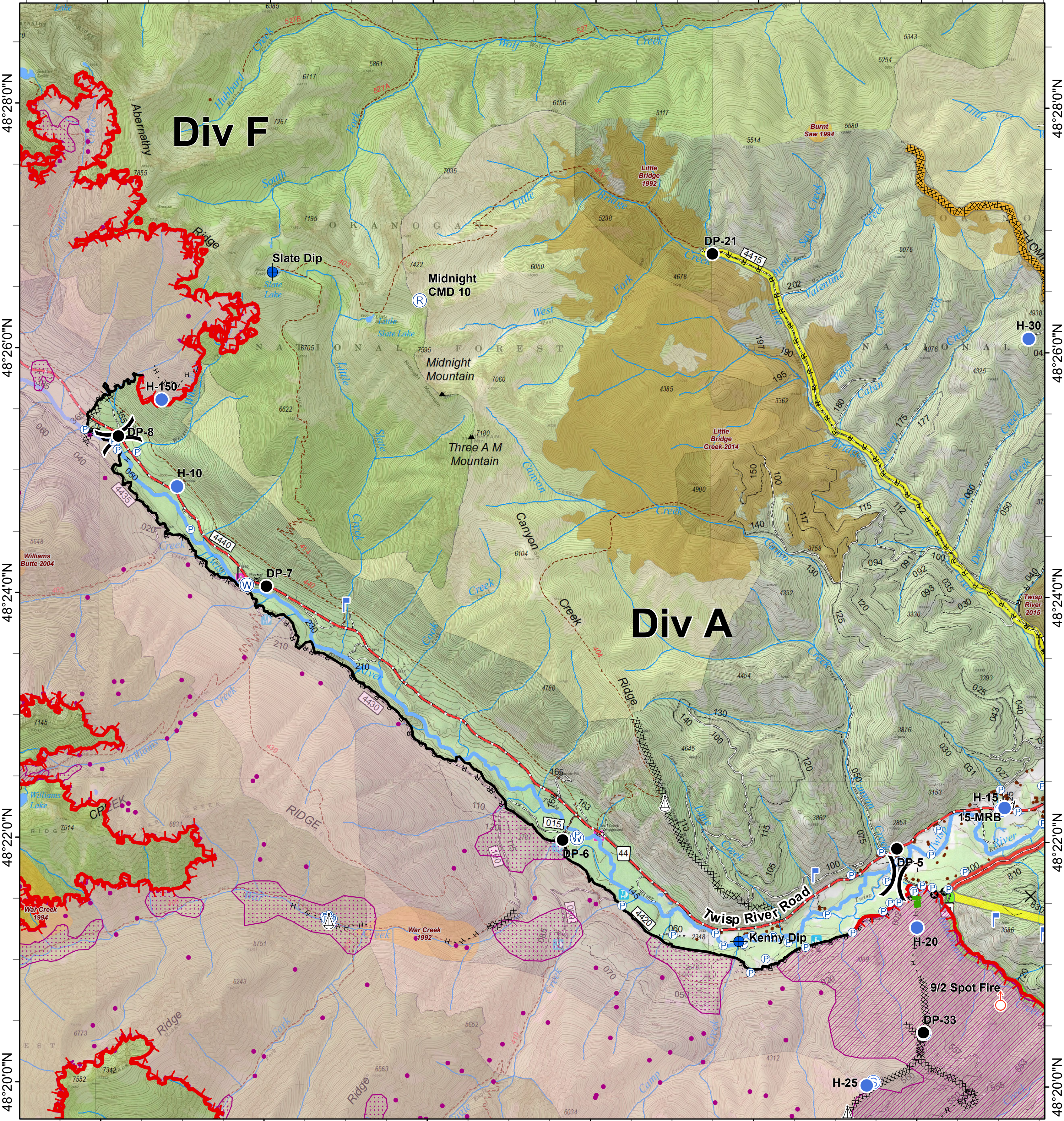


Crescent Mountain Fire

WA-OWF-000422
49,277 Acres
as of 9/1 @ 0037



120°30'0"W 120°28'0"W 120°26'0"W 120°24'0"W 120°22'0"W 120°20'0"W



48°28'0"N 48°26'0"N 48°24'0"N 48°22'0"N 48°20'0"N

0 0.25 0.5 1 Miles

| | | | | | | | |
|--|--|--|---|---|--|--|---|
| <ul style="list-style-type: none"> ✕ Closure ● Dip Site ● Drop Point ● Helispot 📍 Lookout Ⓟ Pump | <ul style="list-style-type: none"> Ⓡ Repeater 🏠 Retardant/Mud Pit 📍 Sling Site 🔥 Spot Fire Ⓢ Staging Area | <ul style="list-style-type: none"> 🌊 Water Source ⎓ Division Break ⊕ Air Tanker Retardant ➡ Escape Route ⊕ Other ⋯ Trail | <ul style="list-style-type: none"> ⊗ Completed Dozer Line H - H Completed Hand Line R - R Road as Completed Line ➡ Air Tanker Retardant ➡ Escape Route ⊕ Other ⋯ Trail | <ul style="list-style-type: none"> 🛣️ Twisp River Road 🛣️ County Roads 🛣️ Other County Roadsd 🛣️ City, Private Roads 🛣️ Paved Road 🛣️ Gravel Road, Suitable for Passenger Car 🛣️ Dirt Road, Suitable for Passenger Car 🛣️ Road Not Suitable for Passenger Car | <ul style="list-style-type: none"> — Closed Road - - - Existing "Unauthorized" Roads - - - Decommissioned Roads 🏠 Structure 🔥 Wildfire Daily Fire Perimeter 🟢 PACE: primary 🟡 PACE: alternate 🟠 PACE: contingency 🔴 PACE: emergency | <p>FIREYEAR</p> <ul style="list-style-type: none"> 🟡 1990-1999 🟠 2000-2009 🟤 2010-2014 🟢 2015-2017 🟢 Roadless Conservation 🟢 Wilderness | <ul style="list-style-type: none"> 🟢 FS 🟡 PVT |
|--|--|--|---|---|--|--|---|

