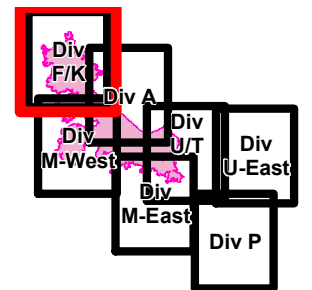


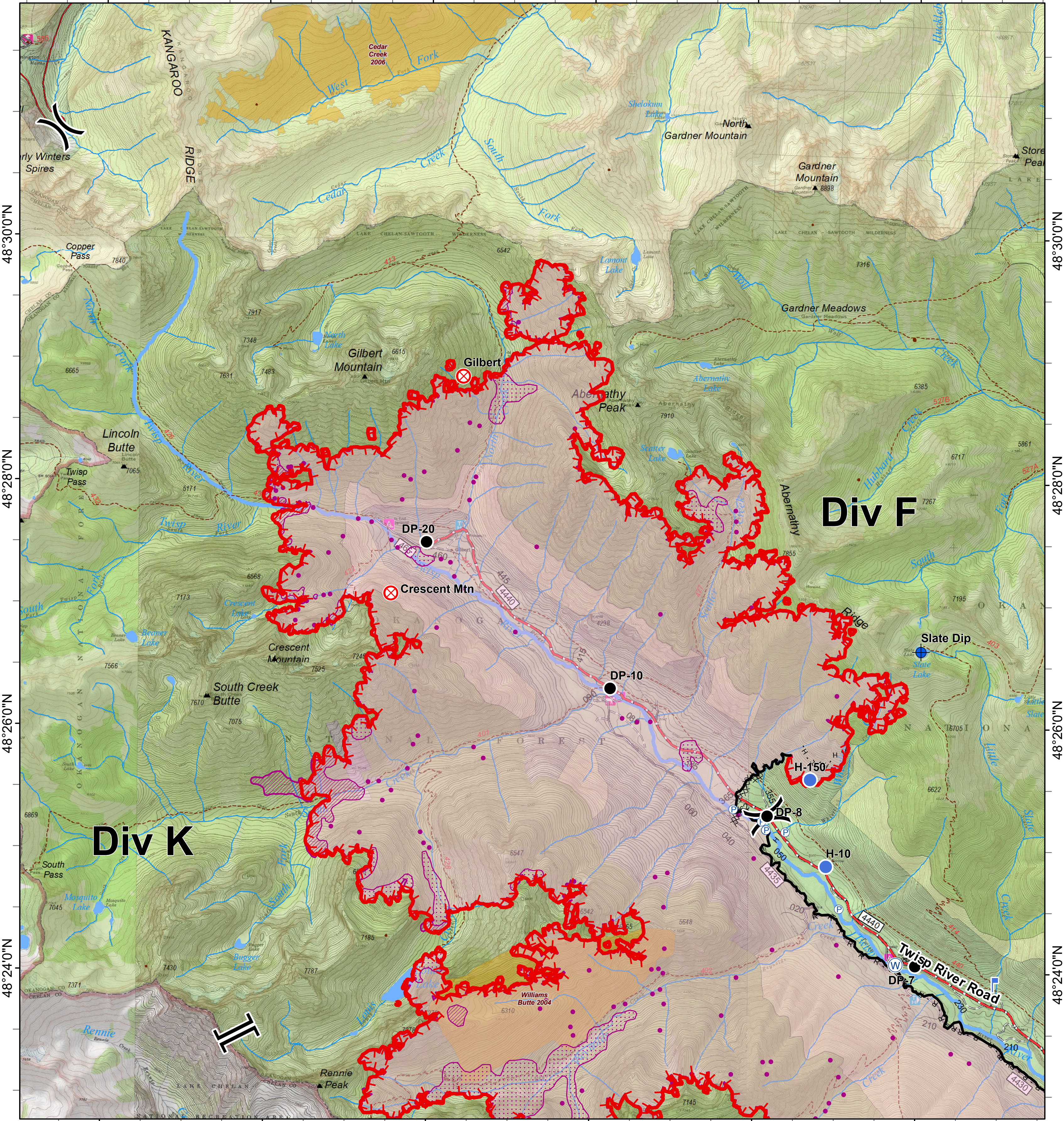


Crescent Mountain Fire

WA-OWF-000422
49,277 Acres
as of 9/1 @ 0037



120°38'0"W 120°36'0"W 120°34'0"W 120°32'0"W 120°30'0"W 120°28'0"W



Dip Site	Lookout	Division Break	Completed Line	Twisp River Road	Closed Road	FIREYEAR	FS
Drop Point	Pump	Water Source	Completed Dozer Line	Highway	Existing "Unauthorized" Roads	2000-2009	NPS
Fire Origin			H - H Completed Hand Line	City, Private Roads	Structure	Roadless Conservation	PVT
Helispot			R - R Road as Completed Line	Paved Road	Wildfire Daily Fire Perimeter	Wilderness	
		Branch Break	Trail	Gravel Road, Suitable for Passenger Car			
				Dirt Road, Suitable for Passenger Car			
				Road Not Suitable for Passenger Car			
		Uncontrolled Fire Edge					

0 0.25 0.5 1 Miles