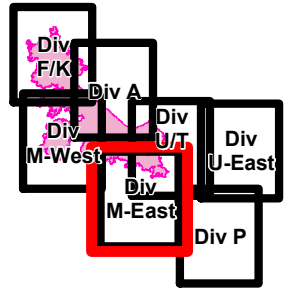




Crescent Mountain Fire

WA-OWF-000422
49,277 Acres
as of 9/1 @ 0037



120°26'0"W

120°24'0"W

120°22'0"W

120°20'0"W

120°18'0"W

120°16'0"W

48°18'0"N

48°16'0"N

48°14'0"N

48°12'0"N

48°18'0"N

48°16'0"N

48°14'0"N

48°12'0"N

120°26'0"W

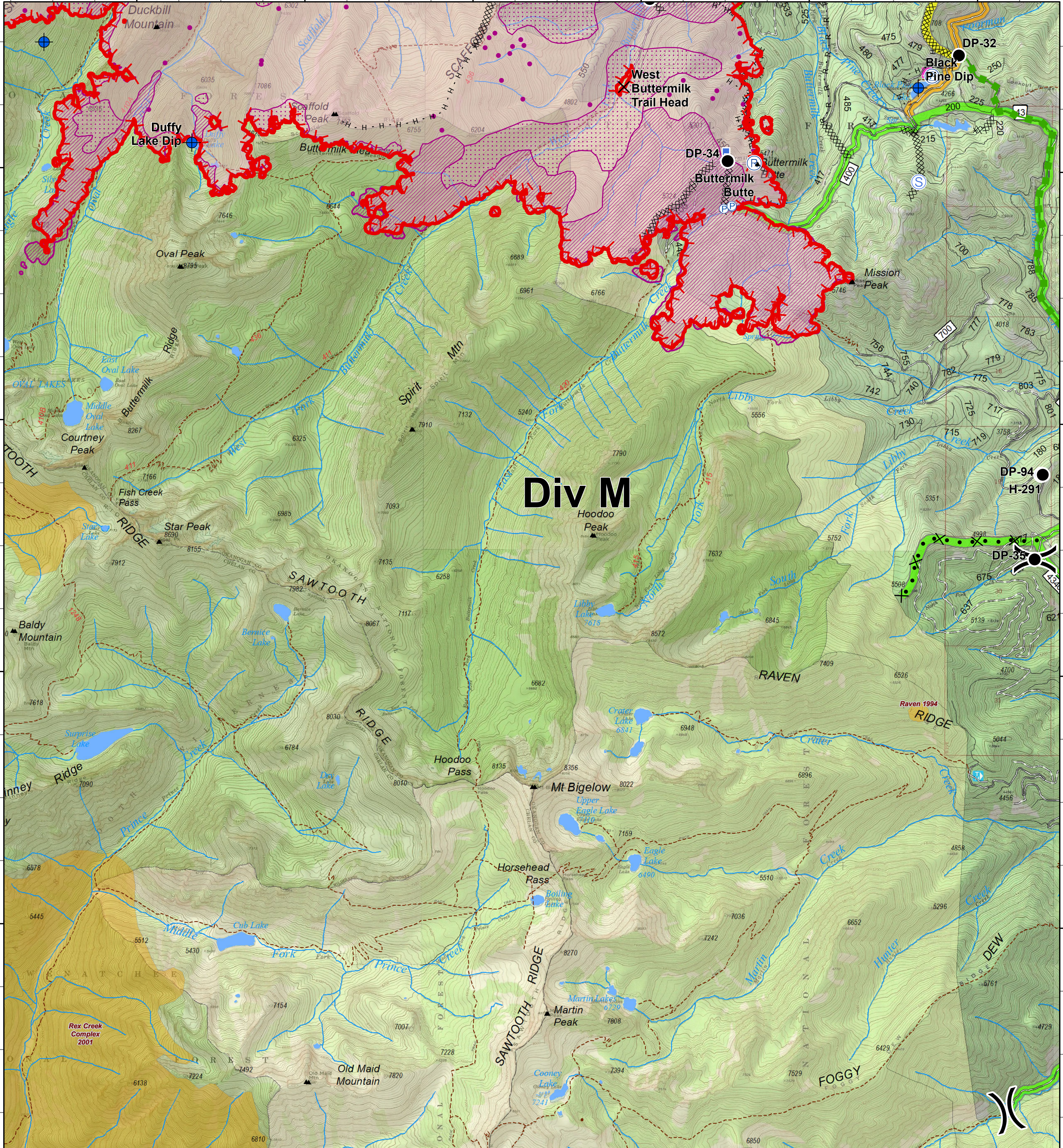
120°24'0"W

120°22'0"W

120°20'0"W

120°18'0"W

120°16'0"W



Div M

- Closure
- Dip Site
- Drop Point
- Helispot
- Lookout
- Pump
- Repeater
- Staging Area
- Water Source
- Completed Dozer Line
- Completed Hand Line
- Road as Completed Line
- Proposed Dozer Line
- Escape Route
- Uncontrolled Fire Edge
- Division Break
- Trail
- City, Private Roads
- Gravel Road, Suitable for Passenger Car
- Dirt Road, Suitable for Passenger Car
- Road Not Suitable for Passenger Car

- Closed Road
- Existing "Unauthorized" Roads
- Decommissioned Roads
- Structure
- Wildfire Daily Fire Perimeter
- PACE: primary
- PACE: alternate
- PACE: contingency
- FIREYEAR 1990-1999
- FIREYEAR 2000-2009
- Roadless Conservation
- Wilderness
- FS

